



SZABO SCANDIC

Part of Europa Biosite

Produktinformation



Forschungsprodukte & Biochemikalien



Zellkultur & Verbrauchsmaterial



Diagnostik & molekulare Diagnostik



Laborgeräte & Service

Weitere Information auf den folgenden Seiten!
See the following pages for more information!



Lieferung & Zahlungsart

siehe unsere [Liefer- und Versandbedingungen](#)

Zuschläge

- Mindermengenzuschlag
- Trockeneiszuschlag
- Gefahrgutzuschlag
- Expressversand

SZABO-SCANDIC HandelsgmbH

Quellenstraße 110, A-1100 Wien

T. +43(0)1 489 3961-0

F. +43(0)1 489 3961-7

mail@szabo-scandic.com

www.szabo-scandic.com

[linkedin.com/company/szaboscandic](https://www.linkedin.com/company/szaboscandic) 

CDC16/APC6 Antibody

Rabbit Polyclonal

Antigen Affinity Purified Protein ID NP_003894.3
Catalog No. A301-166A-T GeneID 8881
Lot No. A301-166A-T-1



APPLICATIONS IP
SPECIES REACTIVITY Human
PRESUMED REACTIVITY Based on 100% sequence identity, this antibody is predicted to react with Mouse
AMOUNT 10 µl
CONCENTRATION 1000 µg/ml
STORAGE/SHELF LIFE 2 - 8° C / 1 year from date of receipt
PHYSICAL STATE Liquid
BUFFER Tris-citrate/phosphate buffer, pH 7 to 8 containing 0.09% Sodium Azide
ISOTYPE IgG
ORIGIN USA
PRODUCTION PROCEDURES Antibody was affinity purified using an epitope specific to CDC16/APC6 immobilized on solid support.

The epitope recognized by A301-166A-T maps to a region between residue 570 and 620 of human cell division cycle 16 (anaphase-promoting complex subunit 6) using the numbering given in entry NP_003894.3 (GeneID 8881).

Immunoglobulin concentration was determined by extinction coefficient: absorbance at 280 nm of 1.4 equals 1.0 mg of IgG.

APPLICATIONS Centrifuge tube to remove product from lid. Optimal working dilutions should be determined experimentally by the investigator. Prepare working dilution immediately before use.

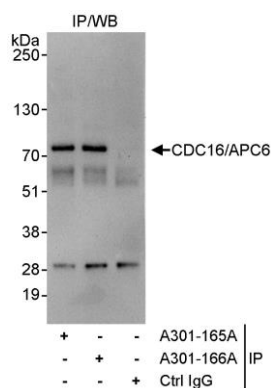
Western Blot Not recommended. Use rabbit anti-CDC16/APC6 antibody A301-165A-T.

Immunoprecipitation 2 - 5 µg/mg lysate

APPLICATION NOTES Western blot of immunoprecipitates performed using Normal Pig Serum (Cat. No. S100-020), Goat anti-Rabbit Light Chain HRP Conjugate (Cat. No. A120-113P) and 4-8% SDS-PAGE (link to IP-western blot protocol in Additional Info section below).

ADDITIONAL INFO <https://www.bethyl.com/product/A301-166A-T>
Use the link above to view SDS, a current list of citations, and other product specific information.
IP-western blot protocol: https://www.bethyl.com/content/protocol_IP_WB

This document certifies that this product has met all of the quality control standards defined by Bethyl Laboratories, Inc.
Eric McIntush, PhD | Chief Scientific Officer Date: June 21, 2019



Detection of human CDC16/APC6 by western blot of immunoprecipitates. *Samples:* Whole cell lysate (1 mg for IP, 20% of IP loaded) from HeLa cells. *Antibody:* Affinity purified rabbit anti-CDC16/APC6 antibody A301-166A-T used for IP at 3 µg/mg lysate. CDC16/APC6 was also immunoprecipitated by rabbit anti-CDC16/APC6 antibody A301-165A, which recognizes an upstream epitope. For blotting immunoprecipitated CDC16/APC6, A301-165A was used at 0.1 µg/ml. *Detection:* Chemiluminescence with an exposure time of 30 seconds.