



SZABO SCANDIC

Part of Europa Biosite

Produktinformation



Forschungsprodukte & Biochemikalien



Zellkultur & Verbrauchsmaterial



Diagnostik & molekulare Diagnostik



Laborgeräte & Service

Weitere Information auf den folgenden Seiten!
See the following pages for more information!



Lieferung & Zahlungsart

siehe unsere [Liefer- und Versandbedingungen](#)

Zuschläge

- Mindermengenzuschlag
- Trockeneiszuschlag
- Gefahrgutzuschlag
- Expressversand

SZABO-SCANDIC HandelsgmbH

Quellenstraße 110, A-1100 Wien

T. +43(0)1 489 3961-0

F. +43(0)1 489 3961-7

mail@szabo-scandic.com

www.szabo-scandic.com

[linkedin.com/company/szaboscandic](https://www.linkedin.com/company/szaboscandic) 

CDC16/APC6 Antibody

Rabbit Polyclonal

Antigen Affinity Purified

Protein ID NP_003894.3

Catalog No. A301-166A

GeneID 8881

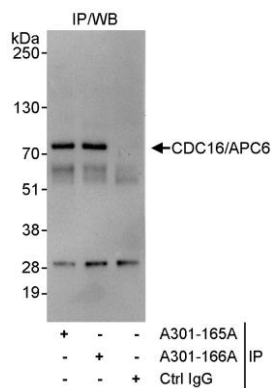
Lot No. A301-166A-1



APPLICATIONS	IP
SPECIES REACTIVITY	Human
PRESUMED REACTIVITY	Based on 100% sequence identity, this antibody is predicted to react with Mouse
AMOUNT	100 µl
CONCENTRATION	1000 µg/ml
STORAGE/SHELF LIFE	2 - 8° C / 1 year from date of receipt
PHYSICAL STATE	Liquid
BUFFER	Tris-citrate/phosphate buffer, pH 7 to 8 containing 0.09% Sodium Azide
ISOTYPE	IgG
ORIGIN	USA
PRODUCTION PROCEDURES	<p>Antibody was affinity purified using an epitope specific to CDC16/APC6 immobilized on solid support.</p> <p>The epitope recognized by A301-166A maps to a region between residue 570 and 620 of human cell division cycle 16 (anaphase-promoting complex subunit 6) using the numbering given in entry NP_003894.3 (GeneID 8881).</p> <p>Immunoglobulin concentration was determined by extinction coefficient: absorbance at 280 nm of 1.4 equals 1.0 mg of IgG.</p>
APPLICATIONS	<p>Centrifuge tube to remove product from lid. Optimal working dilutions should be determined experimentally by the investigator. Prepare working dilution immediately before use.</p> <p>Western Blot Not recommended. Use rabbit anti-CDC16/APC6 antibody A301-165A.</p> <p>Immunoprecipitation 2 - 5 µg/mg lysate</p>
APPLICATION NOTES	Western blot of immunoprecipitates performed using Normal Pig Serum (Cat. No. S100-020), Goat anti-Rabbit Light Chain HRP Conjugate (Cat. No. A120-113P) and 4-8% SDS-PAGE (link to IP-western blot protocol in Additional Info section below).
ADDITIONAL INFO	<p>https://www.bethyl.com/product/A301-166A</p> <p>Use the link above to view SDS, a current list of citations, and other product specific information.</p> <p>IP-western blot protocol: https://www.bethyl.com/content/protocol_IP_WB</p>

This document certifies that this product has met all of the quality control standards defined by Bethyl Laboratories, Inc.
Eric McIntush, PhD | Chief Scientific Officer

Date: June 21, 2019



Detection of human CDC16/APC6 by western blot of immunoprecipitates. *Samples:* Whole cell lysate (1 mg for IP, 20% of IP loaded) from HeLa cells. *Antibodies:* Affinity purified rabbit anti-CDC16/APC6 antibody A301-166A used for IP at 3 µg/mg lysate. CDC16/APC6 was also immunoprecipitated by rabbit anti-CDC16/APC6 antibody A301-165A, which recognizes an upstream epitope. For blotting immunoprecipitated CDC16/APC6, A301-165A was used at 0.1 µg/ml. *Detection:* Chemiluminescence with an exposure time of 30 seconds.