



# SZABO SCANDIC

Part of Europa Biosite

## Produktinformation



Forschungsprodukte & Biochemikalien



Zellkultur & Verbrauchsmaterial



Diagnostik & molekulare Diagnostik



Laborgeräte & Service

Weitere Information auf den folgenden Seiten!  
See the following pages for more information!



### Lieferung & Zahlungsart

siehe unsere [Liefer- und Versandbedingungen](#)

### Zuschläge

- Mindermengenzuschlag
- Trockeneiszuschlag
- Gefahrgutzuschlag
- Expressversand

### SZABO-SCANDIC HandelsgmbH

Quellenstraße 110, A-1100 Wien

T. +43(0)1 489 3961-0

F. +43(0)1 489 3961-7

[mail@szabo-scandic.com](mailto:mail@szabo-scandic.com)

[www.szabo-scandic.com](http://www.szabo-scandic.com)

[linkedin.com/company/szaboscandic](https://www.linkedin.com/company/szaboscandic) 

# RbBP4 Antibody

Rabbit Polyclonal

Antigen Affinity Purified

Protein ID CAA52321.1

Catalog No. A301-206A

GeneID 5928

Lot No. A301-206A-1



<b>APPLICATIONS</b>	WB, IP, IHC
<b>SPECIES REACTIVITY</b>	Human, Mouse
<b>PRESUMED REACTIVITY</b>	Based on 100% sequence identity, this antibody is predicted to react with Zebrafish, X. laevis, X. tropicalis, Chicken, Bovine and Orangutan
<b>AMOUNT</b>	100 µl
<b>CONCENTRATION</b>	200 µg/ml
<b>STORAGE/SHELF LIFE</b>	2 – 8° C / 1 year from date of receipt
<b>PHYSICAL STATE</b>	Liquid
<b>BUFFER</b>	Tris-buffered Saline containing 0.1% BSA and 0.09% Sodium Azide
<b>ISOTYPE</b>	IgG
<b>ORIGIN</b>	USA
<b>PRODUCTION PROCEDURES</b>	Antibody was affinity purified using an epitope specific to RbBP4 immobilized on solid support.

The epitope recognized by A301-206A maps to a region between residue 1 and 50 of human retinoblastoma binding protein 4 (retinoblastoma-binding protein p48) using the numbering given in entry CAA52321.1 (GeneID 5928).

Immunoglobulin concentration was determined by extinction coefficient: absorbance at 280 nm of 1.4 equals 1.0 mg of IgG.

**APPLICATIONS** Centrifuge tube to remove product from lid. Optimal working dilutions should be determined experimentally by the investigator. Prepare working dilution immediately before use.

Western Blot 1:2,000 – 1:10,000

Immunoprecipitation 2 – 5 µg/mg lysate

Immunohistochemistry 1:200 – 1:1,000. Epitope retrieval with citrate buffer pH 6.0 is recommended for FFPE tissue sections.

**APPLICATION NOTES** Western blot of immunoprecipitates performed using Normal Pig Serum (Cat. No. S100-020), Goat anti-Rabbit Light Chain HRP Conjugate (Cat. No. A120-113P) and 4-20% SDS-PAGE (link to IP-western blot protocol in Additional Info section below).

Western blot of lysates performed using standard western blot reagents and 4-20% SDS-PAGE.

**IHC HUMAN CONTROLS** Breast Carcinoma, Ewing Sarcoma, Ovarian Carcinoma, Prostate Carcinoma

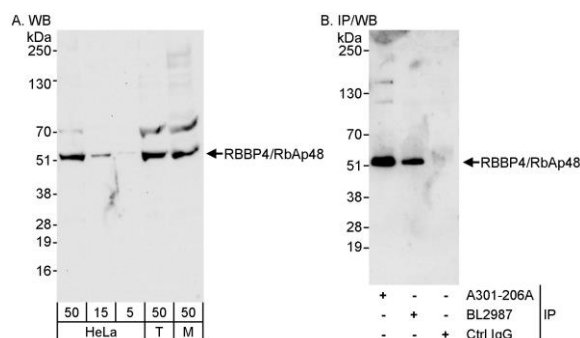
**IHC MOUSE CONTROLS** Colon Carcinoma CT26, Renal Cell Carcinoma, Skin, Teratoma

**ADDITIONAL INFO** <https://www.bethyl.com/product/A301-206A>

Use the link above to view SDS, a current list of citations, and other product specific information.

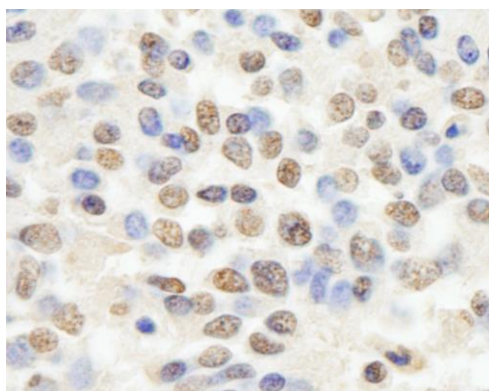
IP-western blot protocol: [https://www.bethyl.com/content/protocol\\_IP\\_WB](https://www.bethyl.com/content/protocol_IP_WB)

This document certifies that this product has met all of the quality control standards defined by Bethyl Laboratories, Inc.  
Eric McIntush, PhD | Chief Scientific Officer Date: June 21, 2019



**Detection of human and mouse RBBP4/RbAp48 by western blot (h&m) and immunoprecipitation (h).**

*Samples:* Whole cell lysate from HeLa (5, 15, and 50  $\mu$ g for WB; 1 mg for IP, 20% of IP loaded), HEK293T (T; 50  $\mu$ g), and mouse NIH 3T3 (M; 50  $\mu$ g) cells. *Antibodies:* Affinity purified rabbit anti-RBBP4/RbAp48 antibody A301-206A used for WB at 0.04  $\mu$ g/ml (A) and 0.1  $\mu$ g/ml (B) and used for IP at 3  $\mu$ g/mg lysate. RBBP4/RbAp48 was also immunoprecipitated by rabbit anti-RBBP4/RbAp48 antibody BL2987, which recognizes a downstream epitope. *Detection:* Chemiluminescence with exposure times of 30 seconds (A) and 10 seconds (B).



**Detection of human RBBP4/RbAp48 by immunohistochemistry.** *Sample:* FFPE section of human Ewing sarcoma. *Antibody:* Affinity purified rabbit anti-RBBP4/RbAp48 (Cat. No. A301-206A Lot1) used at a dilution of 1:200 (1  $\mu$ g/ml). *Detection:* DAB