



# SZABO SCANDIC

Part of Europa Biosite

## Produktinformation



Forschungsprodukte & Biochemikalien



Zellkultur & Verbrauchsmaterial



Diagnostik & molekulare Diagnostik



Laborgeräte & Service

Weitere Information auf den folgenden Seiten!  
See the following pages for more information!



### Lieferung & Zahlungsart

siehe unsere [Liefer- und Versandbedingungen](#)

### Zuschläge

- Mindermengenzuschlag
- Trockeneiszuschlag
- Gefahrgutzuschlag
- Expressversand

### SZABO-SCANDIC HandelsgmbH

Quellenstraße 110, A-1100 Wien

T. +43(0)1 489 3961-0

F. +43(0)1 489 3961-7

[mail@szabo-scandic.com](mailto:mail@szabo-scandic.com)

[www.szabo-scandic.com](http://www.szabo-scandic.com)

[linkedin.com/company/szaboscandic](https://www.linkedin.com/company/szaboscandic) 

# TRIM3/BERP Antibody

Rabbit Polyclonal

Antigen Affinity Purified

Protein ID NP\_006449.2

Catalog No. A301-207A-T

GeneID 10612

Lot No. A301-207A-T-1



|                            |   |
|----------------------------|---|
| <b>APPLICATIONS</b>        | IP, IHC   |
| <b>SPECIES REACTIVITY</b>  | Human   |
| <b>PRESUMED REACTIVITY</b> | Based on 100% sequence identity, this antibody is predicted to react with Mouse and Rat |
| <b>AMOUNT</b>              | 10 µl   |
| <b>CONCENTRATION</b>       | 1000 µg/ml  |
| <b>STORAGE/SHELF LIFE</b>  | 2 - 8° C / 1 year from date of receipt  |
| <b>PHYSICAL STATE</b>      | Liquid  |
| <b>BUFFER</b>              | Tris-citrate/phosphate buffer, pH 7 to 8 containing 0.09% Sodium Azide                  |
| <b>ISOTYPE</b>             | IgG   |
| <b>ORIGIN</b>              | USA   |

**PRODUCTION PROCEDURES** Antibody was affinity purified using an epitope specific to TRIM3/BERP immobilized on solid support.

The epitope recognized by A301-207A-T maps to a region between residue 1 and 50 of human tripartite motif-containing 3 (brain expressed ring finger protein) using the numbering given in entry NP\_006449.2 (GeneID 10612).

Immunoglobulin concentration was determined by extinction coefficient: absorbance at 280 nm of 1.4 equals 1.0 mg of IgG.

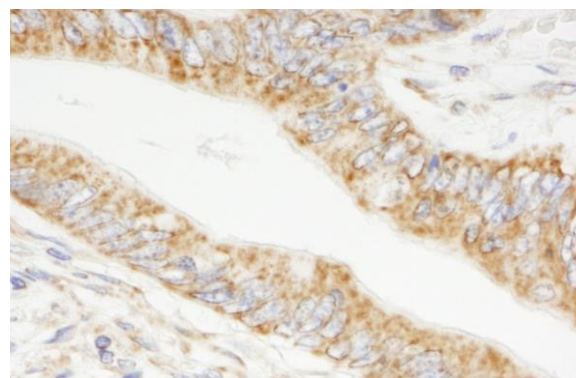
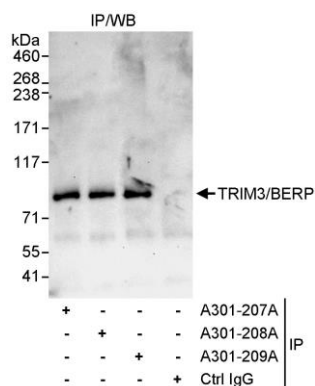
**APPLICATIONS** Centrifuge tube to remove product from lid. Optimal working dilutions should be determined experimentally by the investigator. Prepare working dilution immediately before use.

|                      |  |
|----------------------|--|
| Western Blot         | Not recommended  |
| Immunoprecipitation  | 2 - 5 µg/mg lysate   |
| Immunohistochemistry | 1:500 - 1:2,000. Epitope retrieval with citrate buffer pH 6.0 is recommended for FFPE tissue sections. |

**APPLICATION NOTES** Western blot of immunoprecipitates performed using Normal Pig Serum (Cat. No. S100-020), Goat anti-Rabbit Light Chain HRP Conjugate (Cat. No. A120-113P) and 4-8% SDS-PAGE (link to IP-western blot protocol in Additional Info section below).

**ADDITIONAL INFO** <https://www.bethyl.com/product/A301-207A-T>  
Use the link above to view SDS, a current list of citations, and other product specific information.  
IP-western blot protocol: [https://www.bethyl.com/content/protocol\\_IP\\_WB](https://www.bethyl.com/content/protocol_IP_WB)

This document certifies that this product has met all of the quality control standards defined by Bethyl Laboratories, Inc.  
Eric McIntush, PhD | Chief Scientific Officer Date: June 21, 2019



**Detection of human TRIM3/BERP by western blot of immunoprecipitates.** *Samples:* Whole cell lysate (1 mg for IP, 20% of IP loaded) from HeLa cells. *Antibody:* Affinity purified rabbit anti-TRIM3/BERP antibody A301-207A-T used for IP at 3 µg/mg lysate. TRIM3/BERP was also immunoprecipitated by rabbit anti-TRIM3/BERP antibodies A301-208A and A301-209A, which recognize downstream epitopes. For blotting immunoprecipitated TRIM3/BERP, A301-209A was used at 1 µg/ml. *Detection:* Chemiluminescence with an exposure time of 30 seconds.

**Detection of human TRIM3/BERP by immunohistochemistry.** *Samples:* FFPE section of human colon carcinoma. *Antibody:* Affinity purified rabbit anti-TRIM3/BERP (Cat. No. A301-207A-T Lot1) used at a dilution of 1:1,000 (1 µg/ml). *Detection:* DAB.