



# SZABO SCANDIC

Part of Europa Biosite

## Produktinformation



Forschungsprodukte & Biochemikalien



Zellkultur & Verbrauchsmaterial



Diagnostik & molekulare Diagnostik



Laborgeräte & Service

Weitere Information auf den folgenden Seiten!  
See the following pages for more information!



### Lieferung & Zahlungsart

siehe unsere [Liefer- und Versandbedingungen](#)

### Zuschläge

- Mindermengenzuschlag
- Trockeneiszuschlag
- Gefahrgutzuschlag
- Expressversand

### SZABO-SCANDIC HandelsgmbH

Quellenstraße 110, A-1100 Wien

T. +43(0)1 489 3961-0

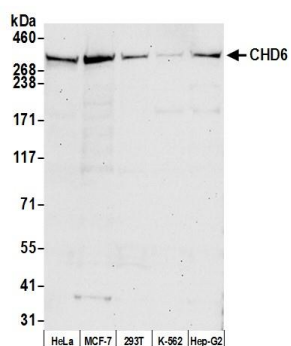
F. +43(0)1 489 3961-7

[mail@szabo-scandic.com](mailto:mail@szabo-scandic.com)

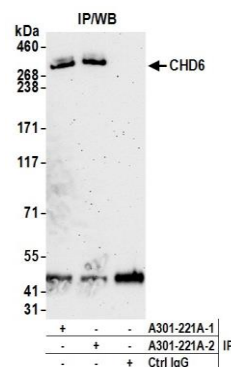
[www.szabo-scandic.com](http://www.szabo-scandic.com)

[linkedin.com/company/szaboscandic](https://www.linkedin.com/company/szaboscandic)





**Detection of human CHD6 by western blot.** *Samples:* Whole cell lysate (50 µg) from HeLa, MCF-7, HEK293T, K-562, and Hep-G2 cells prepared using NETN lysis buffer. *Antibody:* Affinity purified rabbit anti-CHD6 antibody A301-221A-T (lot A301-221A-T-2) used for WB at 1 µg/ml. *Detection:* Chemiluminescence with an exposure time of 30 seconds.



**Detection of human CHD6 by western blot of immunoprecipitates.** *Samples:* Whole cell lysate (1.0 mg per IP reaction; 20% of IP loaded) from MCF-7 cells prepared using NETN lysis buffer. *Antibodies:* Affinity purified rabbit anti-CHD6 antibody A301-221A-T (lot A301-221A-T-2) used for IP at 6 µg per reaction. CHD6 was also immunoprecipitated by a previous lot of this antibody (lot A301-221A-1). For blotting immunoprecipitated CHD6, A301-221A was used at 0.4 µg/ml. *Detection:* Chemiluminescence with an exposure time of 30 seconds.