



SZABO SCANDIC

Part of Europa Biosite

Produktinformation



Forschungsprodukte & Biochemikalien



Zellkultur & Verbrauchsmaterial



Diagnostik & molekulare Diagnostik



Laborgeräte & Service

Weitere Information auf den folgenden Seiten!
See the following pages for more information!



Lieferung & Zahlungsart

siehe unsere [Liefer- und Versandbedingungen](#)

Zuschläge

- Mindermengenzuschlag
- Trockeneiszuschlag
- Gefahrgutzuschlag
- Expressversand

SZABO-SCANDIC HandelsgmbH

Quellenstraße 110, A-1100 Wien

T. +43(0)1 489 3961-0

F. +43(0)1 489 3961-7

mail@szabo-scandic.com

www.szabo-scandic.com

[linkedin.com/company/szaboscandic](https://www.linkedin.com/company/szaboscandic) 

CHD8 Antibody

Rabbit Polyclonal

Antigen Affinity Purified

Protein ID NP_065971.2

Catalog No. A301-225A

GeneID 57680

Lot No. A301-225A-4



APPLICATIONS	WB, IP, IHC
SPECIES REACTIVITY	Human, Mouse
AMOUNT	100 µl
CONCENTRATION	200 µg/ml
STORAGE/SHELF LIFE	2 – 8° C / 1 year from date of receipt
PHYSICAL STATE	Liquid
BUFFER	Tris-buffered Saline containing 0.1% BSA and 0.09% Sodium Azide
ISOTYPE	IgG
ORIGIN	USA
PRODUCTION PROCEDURES	Antibody was affinity purified using an epitope specific to CHD8 immobilized on solid support.

The epitope recognized by A301-225A maps to a region between residue 2252 and 2302 of human chromodomain helicase DNA binding protein 8 using the numbering given in entry NP_065971.2 (GeneID 57680).

Immunoglobulin concentration was determined by extinction coefficient: absorbance at 280 nm of 1.4 equals 1.0 mg of IgG.

APPLICATIONS Centrifuge tube to remove product from lid. Optimal working dilutions should be determined experimentally by the investigator. Prepare working dilution immediately before use.

Western Blot 1:2,000 – 1:10,000

Immunoprecipitation 2 – 10 µg/mg lysate

Immunohistochemistry 1:200 to 1:1000. Epitope retrieval with citrate buffer pH6.0 is recommended for FFPE tissue sections.

APPLICATION NOTES Western blot of immunoprecipitates performed using Normal Pig Serum (Cat. No. S100-020), Goat anti-Rabbit Light Chain HRP Conjugate (Cat. No. A120-113P) and 4-8% SDS-PAGE (link to IP-western blot protocol in Additional Info section below).

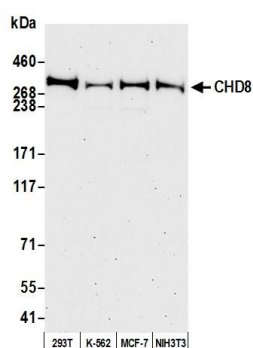
IHC HUMAN CONTROLS Western blot of lysates performed using standard western blot reagents and 4-8% SDS-PAGE. Breast Carcinoma, Non-Small Cell Lung Cancer, Ovarian Carcinoma, Prostate Carcinoma, Small Cell Lung Cancer, Stomach Adenocarcinoma

IHC MOUSE CONTROLS Colon Carcinoma CT26, Plasmacytoma, Teratoma

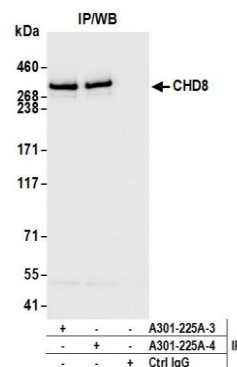
ADDITIONAL INFO <https://www.bethyl.com/product/A301-225A>

Use the link above to view SDS, a current list of citations, and other product specific information. IP-western blot protocol https://www.bethyl.com/content/protocol_IP_WB

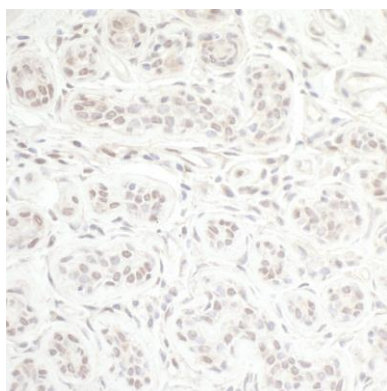
This document certifies that this product has met all of the quality control standards defined by Bethyl Laboratories, Inc.
Eric McIntush, PhD | Chief Scientific Officer Date: July 26, 2019



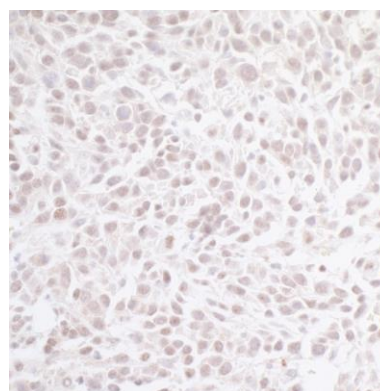
Detection of human and mouse CHD8 by western blot.
Samples: Whole cell lysate (50 µg) from HEK293T, K-562, MCF-7, and NIH 3T3 cells prepared using NETN lysis buffer. *Antibody:* Affinity purified Rabbit anti-CHD8 antibody A301-225A (lot A301-225A-4) used for WB at 0.1 µg/ml. *Detection:* Chemiluminescence with an exposure time of 75 seconds.



Detection of human CHD8 by western blot of immunoprecipitates. *Samples:* Whole cell lysate (1.0 mg per IP reaction; 20% of IP loaded) from HEK293T cells prepared using NETN lysis buffer. *Antibodies:* Rabbit anti-CHD8 antibody A301-225A (lot A301-225A-4) used for IP at 6 µl per reaction. CHD8 was also immunoprecipitated by a previous lot of this antibody (lot A301-225A-3). For blotting immunoprecipitated CHD8, A301-225A was used at 0.1 µg/ml. Chemiluminescence with an exposure time of 1 second.



Detection of human CHD8 by immunohistochemistry.
Sample: FFPE section of human breast carcinoma.
Antibody: Affinity purified rabbit anti-CHD8 (Cat. No. A301-225A lot 4) used at a dilution of 1:1000 (0.2µg/ml).
Detection: DAB



Detection of mouse CHD8 by immunohistochemistry.
Sample: FFPE section of mouse CT26 colon carcinoma.
Antibody: Affinity purified rabbit anti-CHD8 (Cat. No. A301-225A lot 4) used at a dilution of 1:1000 (0.2µg/ml).
Detection: DAB