



# SZABO SCANDIC

Part of Europa Biosite

## Produktinformation



Forschungsprodukte & Biochemikalien



Zellkultur & Verbrauchsmaterial



Diagnostik & molekulare Diagnostik



Laborgeräte & Service

Weitere Information auf den folgenden Seiten!  
See the following pages for more information!



### Lieferung & Zahlungsart

siehe unsere [Liefer- und Versandbedingungen](#)

### Zuschläge

- Mindermengenzuschlag
- Trockeneiszuschlag
- Gefahrgutzuschlag
- Expressversand

### SZABO-SCANDIC HandelsgmbH

Quellenstraße 110, A-1100 Wien

T. +43(0)1 489 3961-0

F. +43(0)1 489 3961-7

[mail@szabo-scandic.com](mailto:mail@szabo-scandic.com)

[www.szabo-scandic.com](http://www.szabo-scandic.com)

[linkedin.com/company/szaboscandic](https://www.linkedin.com/company/szaboscandic) 

# CHD9/CReMM Antibody

Rabbit Polyclonal

Antigen Affinity Purified

Protein ID AAQ24287.1

Catalog No. A301-226A-T

GeneID 80205

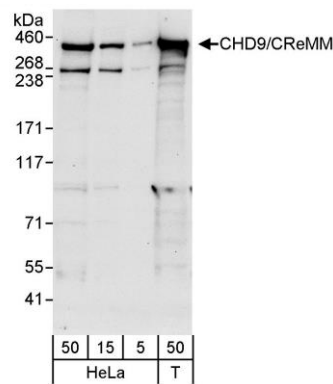
Lot No. A301-226A-T-1



|                              |   |
|------------------------------|---|
| <b>APPLICATIONS</b>          | WB, IP  |
| <b>SPECIES REACTIVITY</b>    | Human   |
| <b>PRESUMED REACTIVITY</b>   | Based on 100% sequence identity, this antibody is predicted to react with Mouse   |
| <b>AMOUNT</b>                | 20 µl (2 blots)   |
| <b>CONCENTRATION</b>         | 400 µg/ml   |
| <b>STORAGE/SHELF LIFE</b>    | 2 - 8° C / 1 year from date of receipt  |
| <b>PHYSICAL STATE</b>        | Liquid  |
| <b>BUFFER</b>                | Tris-buffered Saline containing 0.1% BSA and 0.09% Sodium Azide   |
| <b>ISOTYPE</b>               | IgG   |
| <b>ORIGIN</b>                | USA   |
| <b>PRODUCTION PROCEDURES</b> | Antibody was affinity purified using an epitope specific to CHD9/CReMM immobilized on solid support.<br><br>The epitope recognized by A301-226A-T maps to a region between residue 25 and 75 of human chromodomain helicase DNA binding protein 9 (chromatin-related mesenchymal modulator) using the numbering given in entry AAQ24287.1 (GeneID 80205).   |
| <b>APPLICATIONS</b>          | Centrifuge tube to remove product from lid. Optimal working dilutions should be determined experimentally by the investigator. Prepare working dilution immediately before use.<br><br>Western Blot 1:1000<br><br>Immunoprecipitation The antibody contained within A301-226A-T has been qualified for use in immunoprecipitation; however, we recommend using the alternative formulation of this antibody found as product A301-226A. |
| <b>APPLICATION NOTES</b>     | Western blot of immunoprecipitates performed using Normal Pig Serum (Cat. No. S100-020), Goat anti-Rabbit Light Chain HRP Conjugate (Cat. No. A120-113P) and 3-8% SDS-PAGE (link to IP-western blot protocol in Additional Info section below).<br><br>Western blot of lysates performed using standard western blot reagents and 3-8% SDS-PAGE.  |
| <b>ADDITIONAL INFO</b>       | <a href="https://www.bethyl.com/product/A301-226A-T">https://www.bethyl.com/product/A301-226A-T</a><br>Use the link above to view SDS, a current list of citations, and other product specific information.<br>IP-western blot protocol: <a href="https://www.bethyl.com/content/protocol_IP_WB">https://www.bethyl.com/content/protocol_IP_WB</a>  |

This document certifies that this product has met all of the quality control standards defined by Bethyl Laboratories, Inc.  
Eric McIntush, PhD | Chief Scientific Officer

Date: June 21, 2019

**Detection of human CHD9/CReMM by western blot.**

*Samples:* Whole cell lysate from HeLa (5, 15, and 50 µg) and HEK293T (T; 50 µg) cells. *Antibody:* Affinity purified rabbit anti-CHD9/CReMM antibody A301-226A-T used at 1:1000. *Detection:* Chemiluminescence with an exposure time of 30 seconds.