



SZABO SCANDIC

Part of Europa Biosite

Produktinformation



Forschungsprodukte & Biochemikalien



Zellkultur & Verbrauchsmaterial



Diagnostik & molekulare Diagnostik



Laborgeräte & Service

Weitere Information auf den folgenden Seiten!
See the following pages for more information!



Lieferung & Zahlungsart

siehe unsere [Liefer- und Versandbedingungen](#)

Zuschläge

- Mindermengenzuschlag
- Trockeneiszuschlag
- Gefahrgutzuschlag
- Expressversand

SZABO-SCANDIC HandelsgmbH

Quellenstraße 110, A-1100 Wien

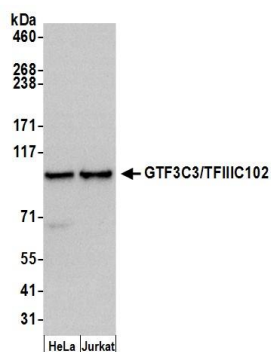
T. +43(0)1 489 3961-0

F. +43(0)1 489 3961-7

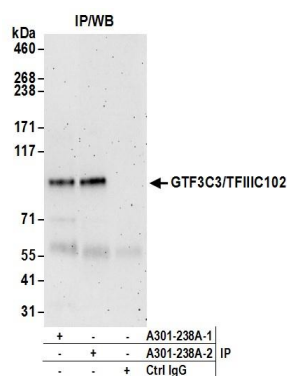
mail@szabo-scandic.com

www.szabo-scandic.com

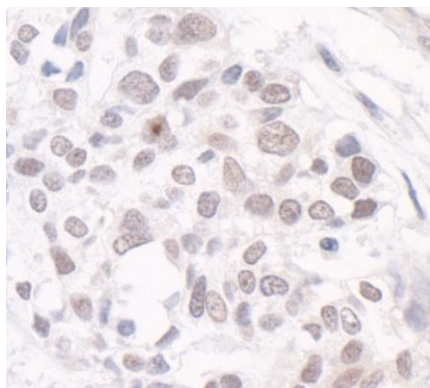
[linkedin.com/company/szaboscandic](https://www.linkedin.com/company/szaboscandic) 



Detection of human GTF3C3/TFIIIC102 by western blot.
Samples: Whole cell lysate (50 µg) from HeLa and Jurkat cells prepared using NETN lysis buffer. *Antibody:* Affinity purified rabbit anti-GTF3C3/TFIIIC102 antibody A301-238A (lot A301-238A-2) used for WB at 0.1 µg/ml. *Detection:* Chemiluminescence with an exposure time of 3 minutes.



Detection of human GTF3C3/TFIIIC102 by western blot of immunoprecipitates. *Samples:* Whole cell lysate (1.0 mg per IP reaction; 20% of IP loaded) from HEK293T cells prepared using NETN lysis buffer. *Antibodies:* Affinity purified rabbit anti-GTF3C3/TFIIIC102 antibody A301-238A (lot A301-238A-2) used for IP at 3 µg per reaction. GTF3C3/TFIIIC102 was also immunoprecipitated by a previous lot of this antibody (lot A301-238A-1). For blotting immunoprecipitated GTF3C3/TFIIIC102, A301-238A was used at 1 µg/ml. *Detection:* Chemiluminescence with an exposure time of 3 minutes.



Detection of human GTF3C3/TFIIIC102 by immunohistochemistry. *Sample:* FFPE section of human breast carcinoma. *Antibody:* Affinity purified rabbit anti-GTF3C3/TFIIIC102 (Cat. No. A301-238A Lot2) used at a dilution of 1:1000 (0.2µg/ml). *Detection:* DAB