



# SZABO SCANDIC

Part of Europa Biosite

## Produktinformation



Forschungsprodukte & Biochemikalien



Zellkultur & Verbrauchsmaterial



Diagnostik & molekulare Diagnostik



Laborgeräte & Service

Weitere Information auf den folgenden Seiten!  
See the following pages for more information!



### Lieferung & Zahlungsart

siehe unsere [Liefer- und Versandbedingungen](#)

### Zuschläge

- Mindermengenzuschlag
- Trockeneiszuschlag
- Gefahrgutzuschlag
- Expressversand

### SZABO-SCANDIC HandelsgmbH

Quellenstraße 110, A-1100 Wien

T. +43(0)1 489 3961-0

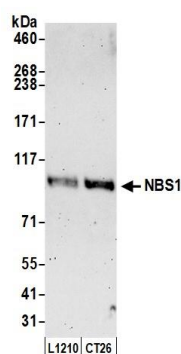
F. +43(0)1 489 3961-7

[mail@szabo-scandic.com](mailto:mail@szabo-scandic.com)

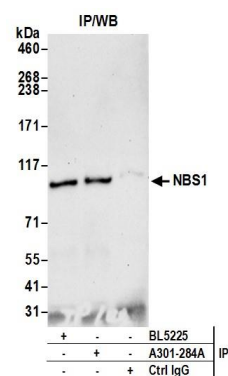
[www.szabo-scandic.com](http://www.szabo-scandic.com)

[linkedin.com/company/szaboscandic](https://www.linkedin.com/company/szaboscandic) 





Detection of mouse NBS1 by western blot. Samples: Whole cell lysate (50  $\mu$ g) from L1210 and CT26.WT cells prepared using NETN lysis buffer. Antibody: Affinity purified rabbit anti-NBS1 antibody A301-284A (lot A301-284A-2) used for WB at 0.1  $\mu$ g/ml. Detection: Chemiluminescence with an exposure time of 3 minutes.



**Detection of mouse NBS1 by western blot of immunoprecipitates.** *Samples:* Whole cell lysate (1.0 mg per IP reaction; 20% of IP loaded) from L1210 cells prepared using NETN lysis buffer. *Antibodies:* Affinity purified rabbit anti-NBS1 antibody A301-284A (lot A301-284A-2) used for IP at 3  $\mu$ g per reaction. NBS1 was also immunoprecipitated by rabbit anti-NBS1 antibody BL5225. For blotting immunoprecipitated NBS1, A301-284A was used at 1  $\mu$ g/ml. *Detection:* Chemiluminescence with an exposure time of 30 seconds.