



# SZABO SCANDIC

Part of Europa Biosite

## Produktinformation



Forschungsprodukte & Biochemikalien



Zellkultur & Verbrauchsmaterial



Diagnostik & molekulare Diagnostik



Laborgeräte & Service

Weitere Information auf den folgenden Seiten!  
See the following pages for more information!



### Lieferung & Zahlungsart

siehe unsere [Liefer- und Versandbedingungen](#)

### Zuschläge

- Mindermengenzuschlag
- Trockeneiszuschlag
- Gefahrgutzuschlag
- Expressversand

### SZABO-SCANDIC HandelsgmbH

Quellenstraße 110, A-1100 Wien

T. +43(0)1 489 3961-0

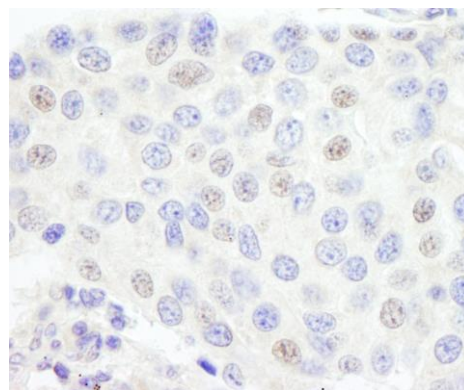
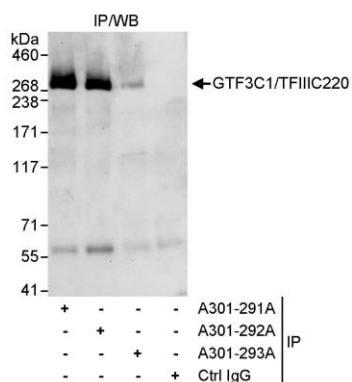
F. +43(0)1 489 3961-7

[mail@szabo-scandic.com](mailto:mail@szabo-scandic.com)

[www.szabo-scandic.com](http://www.szabo-scandic.com)

[linkedin.com/company/szaboscandic](https://www.linkedin.com/company/szaboscandic) 





**Detection of human GTF3C1/TFIIIC220 by western blot of immunoprecipitates.** *Samples:* Whole cell lysate (1 mg for IP, 20% of IP loaded) from HeLa cells. *Antibody:* Affinity purified rabbit anti-GTF3C1/TFIIIC220 antibody A301-292A-T used for IP at 3 µg/mg lysate. GTF3C1/TFIIIC220 was efficiently immunoprecipitated by rabbit anti-GTF3C1/TFIIIC220 antibody A301-291A but not by A301-293A, which recognize other epitopes. For blotting immunoprecipitated GTF3C1/TFIIIC220, A301-293A was used at 1 µg/ml. *Detection:* Chemiluminescence with an exposure time of 30 seconds.

**Detection of human GTF3C1/TFIIIC220 by immunohistochemistry.** *Samples:* FFPE section of human prostate carcinoma. *Antibody:* Affinity purified rabbit anti-GTF3C1/TFIIIC220 (Cat. No. A301-292A-T Lot1) used at a dilution of 1:1,000 (1 µg/ml). *Detection:* DAB.