



# SZABO SCANDIC

Part of Europa Biosite

## Produktinformation



Forschungsprodukte & Biochemikalien



Zellkultur & Verbrauchsmaterial



Diagnostik & molekulare Diagnostik



Laborgeräte & Service

Weitere Information auf den folgenden Seiten!  
See the following pages for more information!



### Lieferung & Zahlungsart

siehe unsere [Liefer- und Versandbedingungen](#)

### Zuschläge

- Mindermengenzuschlag
- Trockeneiszuschlag
- Gefahrgutzuschlag
- Expressversand

### SZABO-SCANDIC HandelsgmbH

Quellenstraße 110, A-1100 Wien

T. +43(0)1 489 3961-0

F. +43(0)1 489 3961-7

[mail@szabo-scandic.com](mailto:mail@szabo-scandic.com)

[www.szabo-scandic.com](http://www.szabo-scandic.com)

[linkedin.com/company/szaboscandic](https://www.linkedin.com/company/szaboscandic) 

# CEP72 Antibody

Rabbit Polyclonal

Antigen Affinity Purified

Protein ID NP\_060610.2

Catalog No. A301-298A-T

GeneID 55722

Lot No. A301-298A-T-1



<b>APPLICATIONS</b>	IP
<b>SPECIES REACTIVITY</b>	Human
<b>AMOUNT</b>	10 µl
<b>CONCENTRATION</b>	1000 µg/ml
<b>STORAGE/SHELF LIFE</b>	2 - 8° C / 1 year from date of receipt
<b>PHYSICAL STATE</b>	Liquid
<b>BUFFER</b>	Tris-citrate/phosphate buffer, pH 7 to 8 containing 0.09% Sodium Azide
<b>ISOTYPE</b>	IgG
<b>ORIGIN</b>	USA
<b>PRODUCTION PROCEDURES</b>	Antibody was affinity purified using an epitope specific to CEP72 immobilized on solid support.

The epitope recognized by A301-298A-T maps to a region between residue 250 and 300 of centrosomal protein 72kDa using the numbering given in entry NP\_060610.2 (GeneID 55722).

Immunoglobulin concentration was determined by extinction coefficient: absorbance at 280 nm of 1.4 equals 1.0 mg of IgG.

**APPLICATIONS** Centrifuge tube to remove product from lid. Optimal working dilutions should be determined experimentally by the investigator. Prepare working dilution immediately before use.

Western Blot Not recommended. Use rabbit anti-CEP72 antibody A301-297A-T.

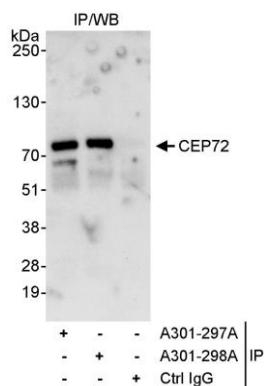
Immunoprecipitation 2 - 5 µg/mg lysate

**APPLICATION NOTES** Western blot of immunoprecipitates performed using Normal Pig Serum (Cat. No. S100-020), Goat anti-Rabbit Light Chain HRP Conjugate (Cat. No. A120-113P) and 4-8% SDS-PAGE (link to IP-western blot protocol in Additional Info section below).

**ADDITIONAL INFO** <https://www.bethyl.com/product/A301-298A-T>

Use the link above to view SDS, a current list of citations, and other product specific information. IP-western blot protocol: [https://www.bethyl.com/content/protocol\\_IP\\_WB](https://www.bethyl.com/content/protocol_IP_WB)

This document certifies that this product has met all of the quality control standards defined by Bethyl Laboratories, Inc.  
Eric McIntush, PhD | Chief Scientific Officer Date: June 21, 2019



**Detection of human CEP72 by western blot of immunoprecipitates.** *Samples:* Whole cell lysate (1 mg for IP, 20% of IP loaded) from HeLa cells. *Antibody:* Affinity purified rabbit anti-CEP72 antibody A301-298A-T used for IP at 3  $\mu\text{g}/\text{mg}$  lysate. CEP72 was also immunoprecipitated by rabbit anti-CEP72 antibody A301-297A, which recognizes an upstream epitope. For blotting immunoprecipitated CEP72, A301-297A was used at 1  $\mu\text{g}/\text{ml}$ . *Detection:* Chemiluminescence with an exposure time of 30 seconds.