



SZABO SCANDIC

Part of Europa Biosite

Produktinformation



Forschungsprodukte & Biochemikalien



Zellkultur & Verbrauchsmaterial



Diagnostik & molekulare Diagnostik



Laborgeräte & Service

Weitere Information auf den folgenden Seiten!
See the following pages for more information!



Lieferung & Zahlungsart

siehe unsere [Liefer- und Versandbedingungen](#)

Zuschläge

- Mindermengenzuschlag
- Trockeneiszuschlag
- Gefahrgutzuschlag
- Expressversand

SZABO-SCANDIC HandelsgmbH

Quellenstraße 110, A-1100 Wien

T. +43(0)1 489 3961-0

F. +43(0)1 489 3961-7

mail@szabo-scandic.com

www.szabo-scandic.com

[linkedin.com/company/szaboscandic](https://www.linkedin.com/company/szaboscandic) 

PTPN12 Antibody

Rabbit Polyclonal

Antigen Affinity Purified

Protein ID NP_002826.2

Catalog No. A301-302A

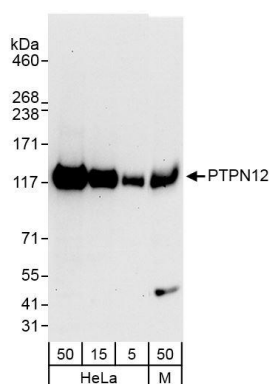
GeneID 5782

Lot No. A301-302A-1

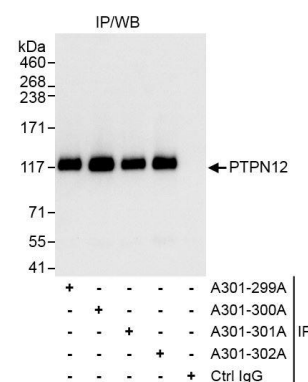


APPLICATIONS	WB, IP, IHC
SPECIES REACTIVITY	Human, Mouse
AMOUNT	100 µl
CONCENTRATION	200 µg/ml
STORAGE/SHELF LIFE	2 - 8° C / 1 year from date of receipt
PHYSICAL STATE	Liquid
BUFFER	Tris-buffered Saline containing 0.1% BSA and 0.09% Sodium Azide
ISOTYPE	IgG
ORIGIN	USA
PRODUCTION PROCEDURES	<p>Antibody was affinity purified using an epitope specific to PTPN12 immobilized on solid support.</p> <p>The epitope recognized by A301-302A maps to a region between residue 760 and 780 of human protein tyrosine phosphatase, non-receptor type 12 using the numbering given in entry NP_002826.2 (GeneID 5782).</p> <p>Immunoglobulin concentration was determined by extinction coefficient: absorbance at 280 nm of 1.4 equals 1.0 mg of IgG.</p>
APPLICATIONS	<p>Centrifuge tube to remove product from lid. Optimal working dilutions should be determined experimentally by the investigator. Prepare working dilution immediately before use.</p> <p>Western Blot 1:2,000 - 1:10,000</p> <p>Immunoprecipitation 2 - 5 µg/mg lysate</p> <p>Immunohistochemistry 1:100 - 1:500. Epitope retrieval with citrate buffer pH 6.0 is recommended for FFPE tissue sections.</p>
APPLICATION NOTES	<p>Western blot of immunoprecipitates performed using Normal Pig Serum (Cat. No. S100-020), Goat anti-Rabbit Light Chain HRP Conjugate (Cat. No. A120-113P) and 4-8% SDS-PAGE (link to IP-western blot protocol in Additional Info section below).</p> <p>Western blot of lysates performed using standard western blot reagents and 4-8% SDS-PAGE.</p>
IHC HUMAN CONTROLS	Breast Carcinoma, Colon Carcinoma, Stomach Adenocarcinoma
IHC MOUSE CONTROLS	Renal Cell Carcinoma
ADDITIONAL INFO	<p>https://www.bethyl.com/product/A301-302A</p> <p>Use the link above to view SDS, a current list of citations, and other product specific information.</p> <p>IP-western blot protocol: https://www.bethyl.com/content/protocol_IP_WB</p>

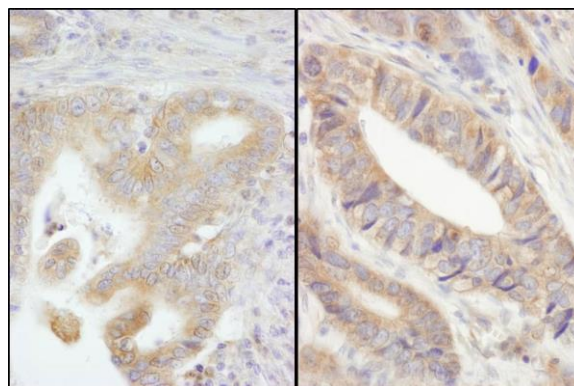
This document certifies that this product has met all of the quality control standards defined by Bethyl Laboratories, Inc.
Eric McIntush, PhD | Chief Scientific Officer Date: June 21, 2019



Detection of human and mouse PTPN12 by western blot.
Samples: Whole cell lysate from HeLa (5, 15 and 50 µg) and mouse NIH 3T3 (M; 50 µg) cells. *Antibodies:* Affinity purified rabbit anti-PTPN12 antibody A301-302A used at 0.04 µg/ml. *Detection:* Chemiluminescence with exposure time of 30 seconds.



Detection of human and mouse PTPN12 by western blot of immunoprecipitation. *Samples:* Whole cell lysate from HeLa (1 mg for IP, 20% of IP loaded) cells. *Antibodies:* Affinity purified rabbit anti-PTPN12 antibody A301-302A used for at 3 µg/mg lysate. PTPN12 was also immunoprecipitated by rabbit anti-PTPN12 antibodies A301-299A, A301-300A, and A301-301A, which recognize upstream epitopes. For blotting immunoprecipitated PTPN12, A301-302A was used at 1 µg/ml. *Detection:* Chemiluminescence with exposure time of 3 seconds.



Detection of human PTPN12 by immunohistochemistry.
Sample: FFPE section of human stomach carcinoma (left) and colon carcinoma (right). *Antibody:* Affinity purified rabbit anti-PTPN12 (Cat. No. A301-302A Lot1) used at a dilution of 1:200 (1 µg/ml). *Detection:* DAB