



# SZABO SCANDIC

Part of Europa Biosite

## Produktinformation



Forschungsprodukte & Biochemikalien



Zellkultur & Verbrauchsmaterial



Diagnostik & molekulare Diagnostik



Laborgeräte & Service

Weitere Information auf den folgenden Seiten!  
See the following pages for more information!



### Lieferung & Zahlungsart

siehe unsere [Liefer- und Versandbedingungen](#)

### Zuschläge

- Mindermengenzuschlag
- Trockeneiszuschlag
- Gefahrgutzuschlag
- Expressversand

### SZABO-SCANDIC HandelsgmbH

Quellenstraße 110, A-1100 Wien

T. +43(0)1 489 3961-0

F. +43(0)1 489 3961-7

[mail@szabo-scandic.com](mailto:mail@szabo-scandic.com)

[www.szabo-scandic.com](http://www.szabo-scandic.com)

[linkedin.com/company/szaboscandic](https://www.linkedin.com/company/szaboscandic) 

# XPF/ERCC4 Antibody

Rabbit Polyclonal

Antigen Affinity Purified

Protein ID AAB07689.1

Catalog No. A301-315A-T

GeneID 2072

Lot No. A301-315A-T-2

**APPLICATIONS** WB, IP

**SPECIES REACTIVITY** Human

**AMOUNT** 10 µl

**CONCENTRATION** 1000 µg/ml

**STORAGE/SHELF LIFE** 2 – 8°C / 1 year from date of receipt

**PHYSICAL STATE** Liquid

**BUFFER** Tris-citrate/phosphate buffer, pH 7 to 8 containing 0.09% Sodium Azide

**ISOTYPE** IgG

**ORIGIN** USA

**PRODUCTION PROCEDURES** Antibody was affinity purified using an epitope specific to XPF/ERCC4 immobilized on solid support.

The epitope recognized by A301-315A-T maps to a region between residue 855 and 905 of human xeroderma pigmentosum, complementation group F (excision repair cross-complementing rodent repair deficiency, complementation group 4) using the numbering given in entry AAB07689.1 (GeneID 2072).

**APPLICATIONS** Centrifuge tube to remove product from lid. Optimal working dilutions should be determined experimentally by the investigator. Prepare working dilution immediately before use.

Western Blot 1:2,000 – 1:10,000

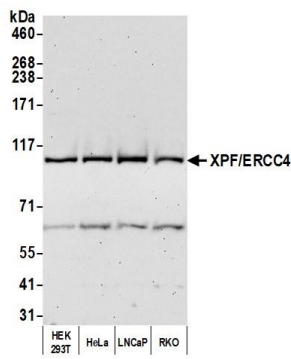
Immunoprecipitation 2 – 10 µg/mg lysate

**ADDITIONAL INFO** <https://www.bethyl.com/product/A301-315A-T>

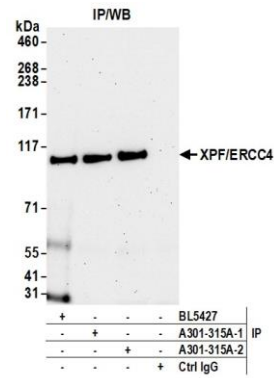
Use the link above to view SDS, a current list of citations, and other product specific information.

IP-western blot protocol: [https://www.bethyl.com/content/protocol\\_IP\\_WB](https://www.bethyl.com/content/protocol_IP_WB)

This document certifies that this product has met all of the quality control standards defined by Bethyl Laboratories, Inc.  
Michael Spencer, PhD Date: June 6, 2022



**Detection of human XPF/ERCC4 by western blot.** *Samples:* Whole cell lysate (25 µg) from HEK293T, HeLa, LNCaP, and RKO cells prepared using NETN lysis buffer. *Antibody:* Affinity purified rabbit anti-XPF/ERCC4 antibody (A301-315A lot 2) used for WB at 0.4 µg/ml. *Detection:* Chemiluminescence with an exposure time of 75 seconds.



**Detection of human XPF/ERCC4 by western blot of immunoprecipitates.** *Samples:* Whole cell lysate (1.0 mg per IP reaction; 20% of IP loaded) from HEK293T cells prepared using NETN lysis buffer. *Antibodies:* Affinity purified rabbit anti-XPF/ERCC4 antibody (A301-315A lot 2) used for IP at 6 µg per reaction. XPF/ERCC4 was also immunoprecipitated by a previous lot of this antibody (A301-315A lot 1) and a second antibody against a different epitope of XPF/ERCC4 (BL5427). For blotting immunoprecipitated XPF/ERCC4, A301-315A was used at 0.4 µg/ml. *Detection:* Chemiluminescence with an exposure time of 75 seconds.