



SZABO SCANDIC

Part of Europa Biosite

Produktinformation



Forschungsprodukte & Biochemikalien



Zellkultur & Verbrauchsmaterial



Diagnostik & molekulare Diagnostik



Laborgeräte & Service

Weitere Information auf den folgenden Seiten!
See the following pages for more information!



Lieferung & Zahlungsart

siehe unsere [Liefer- und Versandbedingungen](#)

Zuschläge

- Mindermengenzuschlag
- Trockeneiszuschlag
- Gefahrgutzuschlag
- Expressversand

SZABO-SCANDIC HandelsgmbH

Quellenstraße 110, A-1100 Wien

T. +43(0)1 489 3961-0

F. +43(0)1 489 3961-7

mail@szabo-scandic.com

www.szabo-scandic.com

[linkedin.com/company/szaboscandic](https://www.linkedin.com/company/szaboscandic) 

GTF2I/TFII-I Antibody

Rabbit Polyclonal

Antigen Affinity Purified

Protein ID NP_127492.1

Catalog No. A301-330A

GeneID 2969

Lot No. A301-330A-1



APPLICATIONS	WB, IP, IHC
SPECIES REACTIVITY	Human, Mouse
AMOUNT	100 µl
CONCENTRATION	200 µg/ml
STORAGE/SHELF LIFE	2 - 8° C / 1 year from date of receipt
PHYSICAL STATE	Liquid
BUFFER	Tris-buffered Saline containing 0.1% BSA and 0.09% Sodium Azide
ISOTYPE	IgG
ORIGIN	USA
PRODUCTION PROCEDURES	Antibody was affinity purified using an epitope specific to GTF2I/TFII-I immobilized on solid support.

The epitope recognized by A301-330A maps to a region between residue 935 and 985 of human general transcription factor II-I using the numbering given in entry NP_127492.1 (GeneID 2969).

Immunoglobulin concentration was determined by extinction coefficient: absorbance at 280 nm of 1.4 equals 1.0 mg of IgG.

APPLICATIONS Centrifuge tube to remove product from lid. Optimal working dilutions should be determined experimentally by the investigator. Prepare working dilution immediately before use.

Western Blot 1:2,000 - 1:10,000

Immunoprecipitation 2 - 5 µg/mg lysate

Immunohistochemistry 1:200 - 1:1,000. Epitope retrieval with citrate buffer pH 6.0 is recommended for FFPE tissue sections.

APPLICATION NOTES Western blot of immunoprecipitates performed using Normal Pig Serum (Cat. No. S100-020), Goat anti-Rabbit Light Chain HRP Conjugate (Cat. No. A120-113P) and 4-8% SDS-PAGE (link to IP-western blot protocol in Additional Info section below).

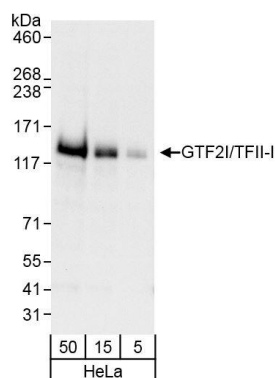
IHC HUMAN CONTROLS Western blot of lysates performed using standard western blot reagents and 4-8% SDS-PAGE. Anaplastic Thyroid Carcinoma, Breast Carcinoma, Colon Carcinoma, Prostate Carcinoma, Stomach Adenocarcinoma

IHC MOUSE CONTROLS Colon Carcinoma CT26, Renal Cell Carcinoma, Teratoma

ADDITIONAL INFO <https://www.bethyl.com/product/A301-330A>

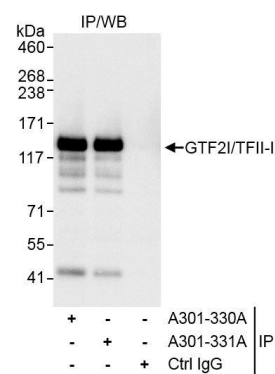
Use the link above to view SDS, a current list of citations, and other product specific information. IP-western blot protocol https://www.bethyl.com/content/protocol_IP_WB

This document certifies that this product has met all of the quality control standards defined by Bethyl Laboratories, Inc.
Eric McIntush, PhD | Chief Scientific Officer Date: October 21, 2019



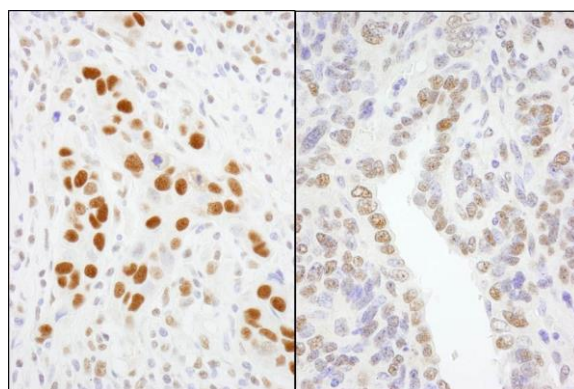
Detection of human GTF2I/TFII-I by western blot.

Samples: Whole cell lysate (5, 15 and 50 µg) from HeLa cells. **Antibodies:** Affinity purified rabbit anti-GTF2I/TFII-I antibody A301-330A (lot A301-330A-1) used for WB at 0.04 µg/ml. **Detection:** Chemiluminescence with exposure time of 10 seconds.



Detection of human GTF2I/TFII-I by western blot of immunoprecipitates.

Samples: Whole cell lysate (1 mg for IP, 20% of IP loaded) from HeLa cells. **Antibodies:** Affinity purified rabbit anti-GTF2I/TFII-I antibody A301-330A (lot A301-330A-1) used for IP at 3 µg/mg lysate. GTF2I/TFII-I was also immunoprecipitated by rabbit anti-GTF2I/TFII-I antibody A301-331A, which recognizes a downstream epitope. For blotting immunoprecipitated GTF2I/TFII-I, A301-330A was used at 1.0 µg/ml. **Detection:** Chemiluminescence with exposure time of 1 second.



Detection of human and mouse GTF2I/TFII-I by immunohistochemistry.

Sample: FFPE section of human breast carcinoma (left) and mouse teratoma (right). **Antibody:** Affinity purified rabbit anti-GTF2I/TFII-I (Cat. No. A301-330A lot 1) used at a dilution of 1:200 (1 µg/ml). **Detection:** DAB