



# SZABO SCANDIC

Part of Europa Biosite

## Produktinformation



Forschungsprodukte & Biochemikalien



Zellkultur & Verbrauchsmaterial



Diagnostik & molekulare Diagnostik



Laborgeräte & Service

Weitere Information auf den folgenden Seiten!  
See the following pages for more information!



### Lieferung & Zahlungsart

siehe unsere [Liefer- und Versandbedingungen](#)

### Zuschläge

- Mindermengenzuschlag
- Trockeneiszuschlag
- Gefahrgutzuschlag
- Expressversand

### SZABO-SCANDIC HandelsgmbH

Quellenstraße 110, A-1100 Wien

T. +43(0)1 489 3961-0

F. +43(0)1 489 3961-7

[mail@szabo-scandic.com](mailto:mail@szabo-scandic.com)

[www.szabo-scandic.com](http://www.szabo-scandic.com)

[linkedin.com/company/szaboscandic](https://www.linkedin.com/company/szaboscandic) 

# GTF2I/TFII-I Antibody

Rabbit Polyclonal

Antigen Affinity Purified

Protein ID NP\_127492.1

Catalog No. A301-331A

GeneID 2969

Lot No. A301-331A-1



**APPLICATIONS** WB, IP, IHC

**SPECIES REACTIVITY** Human, Mouse

**PRESUMED REACTIVITY** Based on 100% sequence identity, this antibody is predicted to react with Rat and Bovine

**AMOUNT** 100 µl

**CONCENTRATION** 200 µg/ml

**STORAGE/SHELF LIFE** 2 - 8° C / 1 year from date of receipt

**PHYSICAL STATE** Liquid

**BUFFER** Tris-buffered Saline containing 0.1% BSA and 0.09% Sodium Azide

**ISOTYPE** IgG

**ORIGIN** USA

**PRODUCTION PROCEDURES** Antibody was affinity purified using an epitope specific to GTF2I/TFII-I immobilized on solid support.

The epitope recognized by A301-331A maps to a region between residue 985 and 998 of human general transcription factor II-I using the numbering given in entry NP\_127492.1 (GeneID 2969).

Immunoglobulin concentration was determined by extinction coefficient: absorbance at 280 nm of 1.4 equals 1.0 mg of IgG.

**APPLICATIONS** Centrifuge tube to remove product from lid. Optimal working dilutions should be determined experimentally by the investigator. Prepare working dilution immediately before use.

Western Blot 1:2,000 - 1:10,000

Immunoprecipitation 2 - 5 µg/mg lysate

Immunohistochemistry 1:200 - 1:1,000. Epitope retrieval with citrate buffer pH 6.0 is recommended for FFPE tissue sections.

**APPLICATION NOTES** Western blot of immunoprecipitates performed using Normal Pig Serum (Cat. No. S100-020), Goat anti-Rabbit Light Chain HRP Conjugate (Cat. No. A120-113P) and 4-8% SDS-PAGE (link to IP-western blot protocol in Additional Info section below).

Western blot of lysates performed using standard western blot reagents and 4-8% SDS-PAGE.

**IHC HUMAN CONTROLS** Anaplastic Thyroid Carcinoma, Bladder Cell Carcinoma, Breast Carcinoma, Colon Carcinoma, Ewing Sarcoma, Ovarian Carcinoma, Stomach Adenocarcinoma, Testicular Seminoma

**IHC MOUSE CONTROLS** Colon Carcinoma CT26, Renal Cell Carcinoma, Teratoma

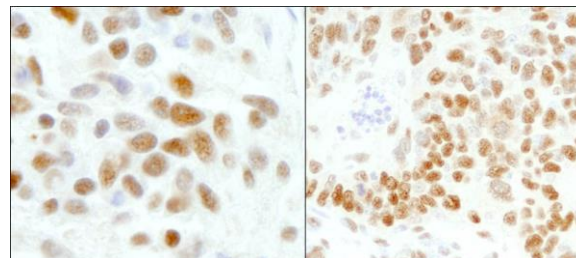
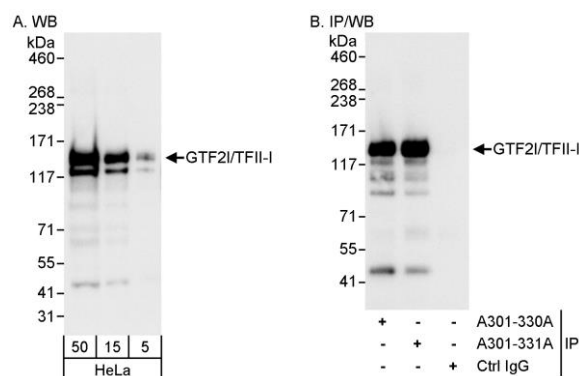
**ADDITIONAL INFO** <https://www.bethyl.com/product/A301-331A>

Use the link above to view SDS, a current list of citations, and other product specific information.

IP-western blot protocol: [https://www.bethyl.com/content/protocol\\_IP\\_WB](https://www.bethyl.com/content/protocol_IP_WB)

This document certifies that this product has met all of the quality control standards defined by Bethyl Laboratories, Inc.  
Eric McIntush, PhD | Chief Scientific Officer

Date: June 21, 2019



**Detection of human GTF2I/TFII-I by western blot and immunoprecipitation.** *Samples:* Whole cell lysate (5, 15 and 50 µg for WB; 1 mg for IP, 20% of IP loaded) from HeLa cells. *Antibodies:* Affinity purified rabbit anti-GTF2I/TFII-I antibody A301-331A used for WB at 0.04 µg/ml (A) and 1 µg/ml (B) and used for IP at 3 µg/mg lysate. GTF2I/TFII-I was also immunoprecipitated by rabbit anti-GTF2I/TFII-I antibody A301-330A, which recognizes an upstream epitope. *Detection:* Chemiluminescence with exposure times of 3 seconds (A) and 1 second (B).

**Detection of human and mouse GTF2I/TFII-I by immunohistochemistry.** *Sample:* FFPE section of human Ewing sarcoma (left) and mouse teratoma (right). *Antibody:* Affinity purified rabbit anti-GTF2I/TFII-I (Cat. No. A301-331A Lot1) used at a dilution of 1:200 (1 µg/ml). *Detection:* DAB