



SZABO SCANDIC

Part of Europa Biosite

Produktinformation



Forschungsprodukte & Biochemikalien



Zellkultur & Verbrauchsmaterial



Diagnostik & molekulare Diagnostik



Laborgeräte & Service

Weitere Information auf den folgenden Seiten!
See the following pages for more information!



Lieferung & Zahlungsart

siehe unsere [Liefer- und Versandbedingungen](#)

Zuschläge

- Mindermengenzuschlag
- Trockeneiszuschlag
- Gefahrgutzuschlag
- Expressversand

SZABO-SCANDIC HandelsgmbH

Quellenstraße 110, A-1100 Wien

T. +43(0)1 489 3961-0

F. +43(0)1 489 3961-7

mail@szabo-scandic.com

www.szabo-scandic.com

[linkedin.com/company/szaboscandic](https://www.linkedin.com/company/szaboscandic) 

GTF2IRD/TFII-IRD1 Antibody

Rabbit Polyclonal

Antigen Affinity Purified Protein ID NP_057412.1
Catalog No. A301-332A-T GeneID 9569
Lot No. A301-332A-T-1



APPLICATIONS IP, IHC
SPECIES REACTIVITY Human
AMOUNT 10 µl
CONCENTRATION 1000 µg/ml
STORAGE/SHELF LIFE 2 - 8° C / 1 year from date of receipt
PHYSICAL STATE Liquid
BUFFER Tris-citrate/phosphate buffer, pH 7 to 8 containing 0.09% Sodium Azide
ISOTYPE IgG
ORIGIN USA
PRODUCTION PROCEDURES Antibody was affinity purified using an epitope specific to GTF2IRD/TFII-IRD1 immobilized on solid support.

The epitope recognized by A301-332A-T maps to a region between residue 650 and 700 of human general transcription factor 2I repeat domain containing 1 using the numbering given in entry NP_057412.1 (GeneID 9569).

Immunoglobulin concentration was determined by extinction coefficient: absorbance at 280 nm of 1.4 equals 1.0 mg of IgG.

APPLICATIONS Centrifuge tube to remove product from lid. Optimal working dilutions should be determined experimentally by the investigator. Prepare working dilution immediately before use.

Western Blot Not recommended. Use rabbit anti-GTF2IRD/TFII-IRD1 antibody A301-333A-T.

Immunoprecipitation 2 - 5 µg/mg lysate

Immunohistochemistry 1:1,000 - 1:5,000. Epitope retrieval with citrate buffer pH 6.0 is recommended for FFPE tissue sections.

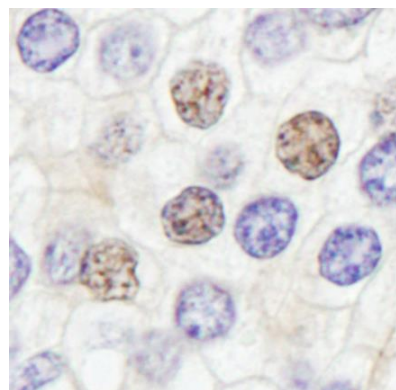
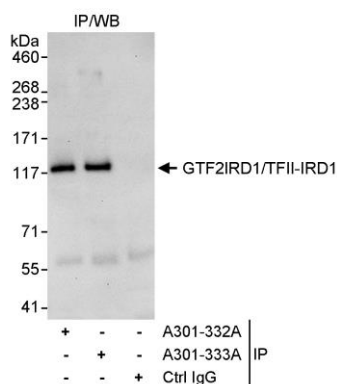
APPLICATION NOTES Western blot of immunoprecipitates performed using Normal Pig Serum (Cat. No. S100-020), Goat anti-Rabbit Light Chain HRP Conjugate (Cat. No. A120-113P) and 4-8% SDS-PAGE (link to IP-western blot protocol in Additional Info section below).

ADDITIONAL INFO <https://www.bethyl.com/product/A301-332A-T>

Use the link above to view SDS, a current list of citations, and other product specific information.

IP-western blot protocol: https://www.bethyl.com/content/protocol_IP_WB

This document certifies that this product has met all of the quality control standards defined by Bethyl Laboratories, Inc.
Eric McIntush, PhD | Chief Scientific Officer Date: June 21, 2019



Detection of human GTF2IRD1/TFII-IRD1 by western blot of immunoprecipitates. *Samples:* Whole cell lysate (1 mg for IP, 20% of IP loaded) from HeLa cells. *Antibody:* Affinity purified rabbit anti-GTF2IRD1/TFII-IRD1 antibody A301-332A-T used for IP at 3 µg/mg lysate.

GTF2IRD1/TFII-IRD1 was also immunoprecipitated by rabbit anti-GTF2IRD1/TFII-IRD1 antibody A301-333A, which recognizes a downstream epitope. For blotting immunoprecipitated GTF2IRD1/TFII-IRD1, A301-333A was used at 1 µg/ml. *Detection:* Chemiluminescence with an exposure time of 30 seconds.

Detection of human GTF2IRD1/TFII-IRD1 by immunohistochemistry. *Samples:* FFPE section of human prostate carcinoma. *Antibody:* Affinity purified rabbit anti-GTF2IRD1/TFII-IRD1 (Cat. No. A301-332A-T Lot1) used at a dilution of 1:5,000 (0.2 µg/ml). *Detection:* DAB.