



SZABO SCANDIC

Part of Europa Biosite

Produktinformation



Forschungsprodukte & Biochemikalien



Zellkultur & Verbrauchsmaterial



Diagnostik & molekulare Diagnostik



Laborgeräte & Service

Weitere Information auf den folgenden Seiten!
See the following pages for more information!



Lieferung & Zahlungsart

siehe unsere [Liefer- und Versandbedingungen](#)

Zuschläge

- Mindermengenzuschlag
- Trockeneiszuschlag
- Gefahrgutzuschlag
- Expressversand

SZABO-SCANDIC HandelsgmbH

Quellenstraße 110, A-1100 Wien

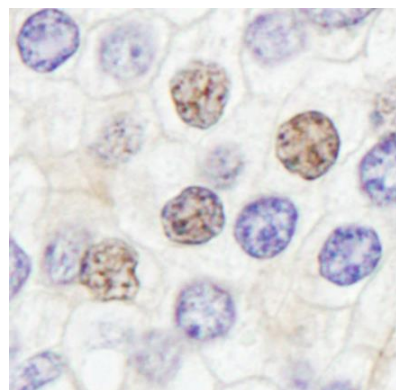
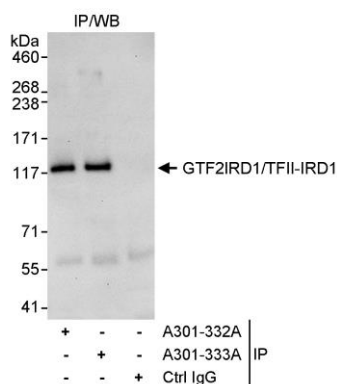
T. +43(0)1 489 3961-0

F. +43(0)1 489 3961-7

mail@szabo-scandic.com

www.szabo-scandic.com

[linkedin.com/company/szaboscandic](https://www.linkedin.com/company/szaboscandic) 



Detection of human GTF2IRD1/TFII-IRD1 by western blot of immunoprecipitates. *Samples:* Whole cell lysate (1 mg for IP, 20% of IP loaded) from HeLa cells. *Antibodies:* Affinity purified rabbit anti-GTF2IRD1/TFII-IRD1 antibody A301-332A used for IP at 3 μ g/mg lysate. GTF2IRD1/TFII-IRD1 was also immunoprecipitated by rabbit anti-GTF2IRD1/TFII-IRD1 antibody A301-333A, which recognizes a downstream epitope. For blotting immunoprecipitated GTF2IRD1/TFII-IRD1, A301-333A was used at 1 μ g/ml. *Detection:* Chemiluminescence with an exposure time of 30 seconds.

Detection of human GTF2IRD/TFII-IRD1 by immunohistochemistry. *Sample:* FFPE section of human prostate carcinoma. *Antibody:* Affinity purified rabbit anti-GTF2IRD/TFII-IRD1 (Cat. No. A301-332A Lot1) used at a dilution of 1:5,000 (0.2 μ g/ml). *Detection:* DAB