



# SZABO SCANDIC

Part of Europa Biosite

## Produktinformation



Forschungsprodukte & Biochemikalien



Zellkultur & Verbrauchsmaterial



Diagnostik & molekulare Diagnostik



Laborgeräte & Service

Weitere Information auf den folgenden Seiten!  
See the following pages for more information!



### Lieferung & Zahlungsart

siehe unsere [Liefer- und Versandbedingungen](#)

### Zuschläge

- Mindermengenzuschlag
- Trockeneiszuschlag
- Gefahrgutzuschlag
- Expressversand

### SZABO-SCANDIC HandelsgmbH

Quellenstraße 110, A-1100 Wien

T. +43(0)1 489 3961-0

F. +43(0)1 489 3961-7

[mail@szabo-scandic.com](mailto:mail@szabo-scandic.com)

[www.szabo-scandic.com](http://www.szabo-scandic.com)

[linkedin.com/company/szaboscandic](https://www.linkedin.com/company/szaboscandic) 

# GTF2IRD/TFII-IRD1 Antibody

Rabbit Polyclonal

Antigen Affinity Purified	Protein ID	NP_057412.1
Catalog No. A301-333A	GeneID	9569
Lot No. A301-333A-2		

---

<b>APPLICATIONS</b>	WB, IHC
<b>SPECIES REACTIVITY</b>	Human
<b>AMOUNT</b>	100 µl
<b>CONCENTRATION</b>	200 µg/ml
<b>STORAGE/SHELF LIFE</b>	2 - 8°C / 1 year from date of receipt
<b>PHYSICAL STATE</b>	Liquid
<b>BUFFER</b>	Tris-buffered Saline containing 0.1% BSA and 0.09% Sodium Azide
<b>ISOTYPE</b>	IgG
<b>ORIGIN</b>	USA
<b>PRODUCTION PROCEDURES</b>	Antibody was affinity purified using an epitope specific to GTF2IRD/TFII-IRD1 immobilized on solid support.

The epitope recognized by A301-333A maps to a region between residue 909 and 959 of human general transcription factor 2I repeat domain containing 1 using the numbering given in entry NP\_057412.1 (GeneID 9569).

Immunoglobulin concentration was determined by extinction coefficient: absorbance at 280 nm of 1.4 equals 1.0 mg of IgG.

**APPLICATIONS** Centrifuge tube to remove product from lid. Optimal working dilutions should be determined experimentally by the investigator. Prepare working dilution immediately before use.

Western Blot 1:2,000 - 1:10,000

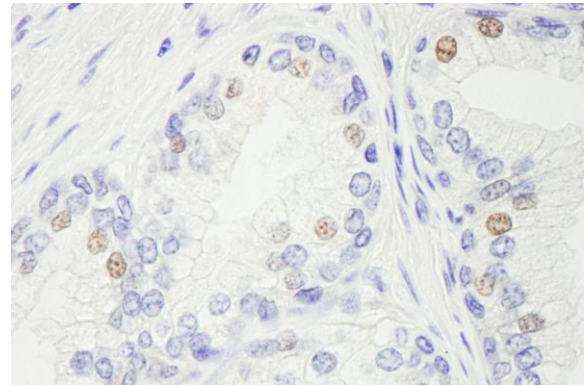
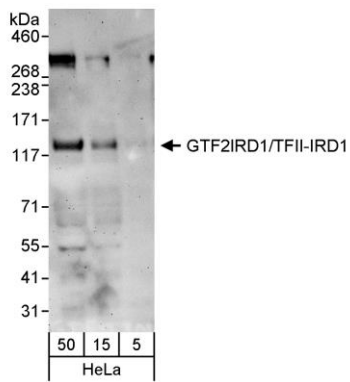
Immunohistochemistry 1:100 - 1:500. Epitope retrieval with citrate buffer pH 6.0 is recommended for FFPE tissue sections.

**IHC HUMAN CONTROLS** Prostate Carcinoma

**ADDITIONAL INFO** <https://www.bethyl.com/product/A301-333A>

Use the link above to view SDS, a current list of citations, and other product specific information. IP-western blot protocol: [https://www.bethyl.com/content/protocol\\_IP\\_WB](https://www.bethyl.com/content/protocol_IP_WB)

This document certifies that this product has met all of the quality control standards defined by Bethyl Laboratories, Inc.  
Michael Spencer, PhD Date: March 18, 2022

**Detection of human GTF2IRD1/TFII-IRD1 by western blot.**

*Samples:* Whole cell lysate (5, 15, and 50 µg) from HeLa cells. *Antibody:* Affinity purified rabbit anti-GTF2IRD1/TFII-IRD1 antibody (A301-333A lot 2) used at 0.1 µg/ml. *Detection:* Chemiluminescence with an exposure time of 3 minutes.

**Detection of human GTF2IRD1/TFII-IRD1 by immunohistochemistry.**

*Sample:* FFPE section of human prostate carcinoma. *Antibody:* Affinity purified rabbit anti-GTF2IRD1/TFII-IRD1 (Cat. No. A301-333A Lot1) used at a dilution of 1:200 (1 µg/ml). *Detection:* DAB