



# SZABO SCANDIC

Part of Europa Biosite

## Produktinformation



Forschungsprodukte & Biochemikalien



Zellkultur & Verbrauchsmaterial



Diagnostik & molekulare Diagnostik



Laborgeräte & Service

Weitere Information auf den folgenden Seiten!  
See the following pages for more information!



### Lieferung & Zahlungsart

siehe unsere [Liefer- und Versandbedingungen](#)

### Zuschläge

- Mindermengenzuschlag
- Trockeneiszuschlag
- Gefahrgutzuschlag
- Expressversand

### SZABO-SCANDIC HandelsgmbH

Quellenstraße 110, A-1100 Wien

T. +43(0)1 489 3961-0

F. +43(0)1 489 3961-7

[mail@szabo-scandic.com](mailto:mail@szabo-scandic.com)

[www.szabo-scandic.com](http://www.szabo-scandic.com)

[linkedin.com/company/szaboscandic](https://www.linkedin.com/company/szaboscandic) 

# CPSF68 Antibody

Rabbit Polyclonal

Antigen Affinity Purified

Protein ID NP\_008938.1

Catalog No. A301-358A

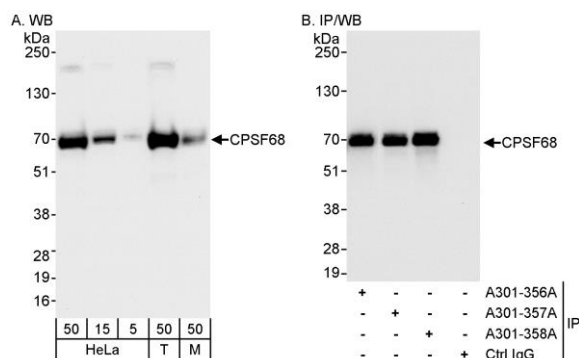
GeneID 11052

Lot No. A301-358A-1

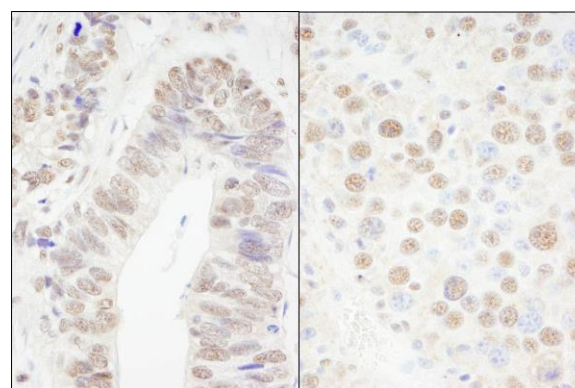


|                              |   |
|------------------------------|---|
| <b>APPLICATIONS</b>          | WB, IP, IHC   |
| <b>SPECIES REACTIVITY</b>    | Human, Mouse  |
| <b>PRESUMED REACTIVITY</b>   | Based on 100% sequence identity, this antibody is predicted to react with <i>X. laevis</i> , Chicken, Bovine and Orangutan  |
| <b>AMOUNT</b>                | 100 µl  |
| <b>CONCENTRATION</b>         | 200 µg/ml   |
| <b>STORAGE/SHELF LIFE</b>    | 2 – 8° C / 1 year from date of receipt  |
| <b>PHYSICAL STATE</b>        | Liquid  |
| <b>BUFFER</b>                | Tris-buffered Saline containing 0.1% BSA and 0.09% Sodium Azide   |
| <b>ISOTYPE</b>               | IgG   |
| <b>ORIGIN</b>                | USA   |
| <b>PRODUCTION PROCEDURES</b> | <p>Antibody was affinity purified using an epitope specific to CPSF68 immobilized on solid support.</p> <p>The epitope recognized by A301-358A maps to a region between residue 501 and 551 of human cleavage and polyadenylation specific factor 6, 68kDa using the numbering given in entry NP_008938.1 (GeneID 11052).</p> <p>Immunoglobulin concentration was determined by extinction coefficient: absorbance at 280 nm of 1.4 equals 1.0 mg of IgG.</p> |
| <b>APPLICATIONS</b>          | <p>Centrifuge tube to remove product from lid. Optimal working dilutions should be determined experimentally by the investigator. Prepare working dilution immediately before use.</p> <p>Western Blot 1:2,000 – 1:10,000</p> <p>Immunoprecipitation 2 – 5 µg/mg lysate</p> <p>Immunohistochemistry 1:100 – 1:500. Epitope retrieval with citrate buffer pH 6.0 is recommended for FFPE tissue sections.</p>  |
| <b>APPLICATION NOTES</b>     | <p>Western blot of immunoprecipitates performed using Normal Pig Serum (Cat. No. S100-020), Goat anti-Rabbit Light Chain HRP Conjugate (Cat. No. A120-113P) and 4-20% SDS-PAGE (link to IP-western blot protocol in Additional Info section below).</p> <p>Western blot of lysates performed using standard western blot reagents and 4-20% SDS-PAGE.</p>   |
| <b>IHC HUMAN CONTROLS</b>    | Breast Carcinoma, Colon Carcinoma, Ovarian Carcinoma, Prostate Carcinoma, Stomach Adenocarcinoma  |
| <b>IHC MOUSE CONTROLS</b>    | Colon Carcinoma CT26, Renal Cell Carcinoma, Teratoma  |
| <b>ADDITIONAL INFO</b>       | <p><a href="https://www.bethyl.com/product/A301-358A">https://www.bethyl.com/product/A301-358A</a></p> <p>Use the link above to view SDS, a current list of citations, and other product specific information.</p> <p>IP-western blot protocol: <a href="https://www.bethyl.com/content/protocol_IP_WB">https://www.bethyl.com/content/protocol_IP_WB</a></p>   |

This document certifies that this product has met all of the quality control standards defined by Bethyl Laboratories, Inc.  
Eric McIntush, PhD | Chief Scientific Officer Date: June 21, 2019



**Detection of human and mouse CPSF68 by western blot (h&m) and immunoprecipitation (h).** *Samples:* Whole cell lysate from HeLa (5, 15 and 50 µg for WB; 1 mg for IP, 20% of IP loaded), HEK293T (T; 50 µg) and mouse NIH 3T3 (M; 50 µg) cells. *Antibodies:* Affinity purified rabbit anti-CPSF68 antibody A301-358A used for WB at 0.04 µg/ml (A) and 1 µg/ml (B) and used for IP at 3 µg/mg lysate. CPSF68 was also immunoprecipitated by rabbit anti-CPSF68 antibodies A301-356A and A301-357A, which recognize upstream epitopes. *Detection:* Chemiluminescence with exposure times of 3 seconds (A) and 1 second (B).



**Detection of human and mouse CPSF68 by immunohistochemistry.** *Sample:* FFPE section of human colon carcinoma (left) and mouse renal cell carcinoma (right). *Antibody:* Affinity purified rabbit anti-CPSF68 (Cat. No. A301-358A) used at a dilution of 1:200 (1 µg/ml). *Detection:* DAB