



# SZABO SCANDIC

Part of Europa Biosite

## Produktinformation



Forschungsprodukte & Biochemikalien



Zellkultur & Verbrauchsmaterial



Diagnostik & molekulare Diagnostik



Laborgeräte & Service

Weitere Information auf den folgenden Seiten!  
See the following pages for more information!



### Lieferung & Zahlungsart

siehe unsere [Liefer- und Versandbedingungen](#)

### Zuschläge

- Mindermengenzuschlag
- Trockeneiszuschlag
- Gefahrgutzuschlag
- Expressversand

### SZABO-SCANDIC HandelsgmbH

Quellenstraße 110, A-1100 Wien

T. +43(0)1 489 3961-0

F. +43(0)1 489 3961-7

[mail@szabo-scandic.com](mailto:mail@szabo-scandic.com)

[www.szabo-scandic.com](http://www.szabo-scandic.com)

[linkedin.com/company/szaboscandic](https://www.linkedin.com/company/szaboscandic) 

# AKAP8L/HA95 Antibody

Rabbit Polyclonal

Antigen Affinity Purified

Protein ID NP\_055186.2

Catalog No. A301-366A

GeneID 26993

Lot No. A301-366A-1



**APPLICATIONS** WB, IP, IHC

**SPECIES REACTIVITY** Human

**AMOUNT** 100 µl

**CONCENTRATION** 200 µg/ml

**STORAGE/SHELF LIFE** 2 – 8° C / 1 year from date of receipt

**PHYSICAL STATE** Liquid

**BUFFER** Tris-buffered Saline containing 0.1% BSA and 0.09% Sodium Azide

**ISOTYPE** IgG

**ORIGIN** USA

**PRODUCTION PROCEDURES** Antibody was affinity purified using an epitope specific to AKAP8L/HA95 immobilized on solid support.

The epitope recognized by A301-366A maps to a region between residue 596 and 646 of human A kinase (PRKA) anchor protein 8-like (helicase A-binding protein 95 kDa) using the numbering given in entry NP\_055186.2 (GeneID 26993).

Immunoglobulin concentration was determined by extinction coefficient: absorbance at 280 nm of 1.4 equals 1.0 mg of IgG.

**APPLICATIONS** Centrifuge tube to remove product from lid. Optimal working dilutions should be determined experimentally by the investigator. Prepare working dilution immediately before use.

Western Blot 1:2,000 – 1:10,000

Immunoprecipitation 2 – 5 µg/mg lysate

Immunohistochemistry 1:500 – 1:2,000. Epitope retrieval with citrate buffer pH 6.0 is recommended for FFPE tissue sections.

**APPLICATION NOTES** Western blot of immunoprecipitates performed using Normal Pig Serum (Cat. No. S100-020), Goat anti-Rabbit Light Chain HRP Conjugate (Cat. No. A120-113P) and 4-8% SDS-PAGE (link to IP-western blot protocol in Additional Info section below).

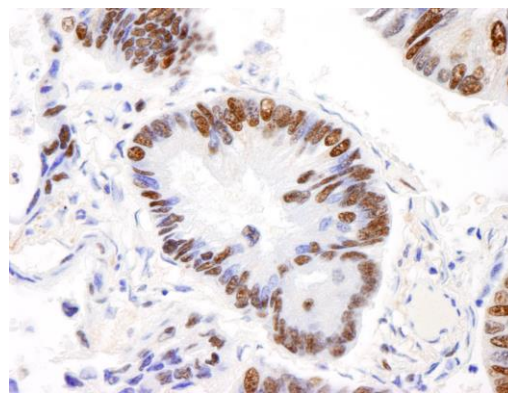
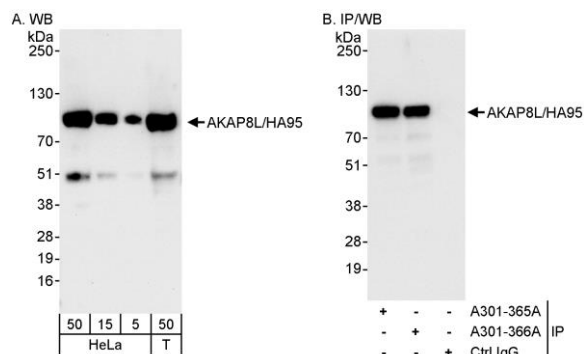
Western blot of lysates performed using standard western blot reagents and 4-8% SDS-PAGE.

**IHC HUMAN CONTROLS** Anaplastic Thyroid Carcinoma, Bladder Cell Carcinoma, Breast Carcinoma, Colon Carcinoma, Ovarian Carcinoma, Pancreatic Islet Cell Tumor, Prostate Carcinoma, Skin Basal Cell Carcinoma, Stomach Adenocarcinoma, Testicular Seminoma

**ADDITIONAL INFO** <https://www.bethyl.com/product/A301-366A>

Use the link above to view SDS, a current list of citations, and other product specific information. IP-western blot protocol: [https://www.bethyl.com/content/protocol\\_IP\\_WB](https://www.bethyl.com/content/protocol_IP_WB)

This document certifies that this product has met all of the quality control standards defined by Bethyl Laboratories, Inc.  
Eric McIntush, PhD | Chief Scientific Officer Date: June 21, 2019



**Detection of human AKAP8L/HA95 by western blot and immunoprecipitation.** *Samples:* Whole cell lysate from HeLa (5, 15 and 50 µg for WB; 1 mg for IP, 20% of IP loaded) and HEK293T (T; 50 µg) cells. *Antibodies:* Affinity purified rabbit anti-AKAP8L/HA95 antibody A301-366A used for WB at 0.04 µg/ml (A) and 1 µg/ml (B) and used for IP at 3 µg/mg lysate. AKAP8L/HA95 was also immunoprecipitated by rabbit anti-AKAP8L/HA95 antibody A301-365A, which recognizes an upstream epitope. *Detection:* Chemiluminescence with exposure times of 10 seconds (A) and 1 second (B).

**Detection of human AKAP8L/HA95 by immunohistochemistry.** *Sample:* FFPE section of human lung carcinoma. *Antibody:* Affinity purified rabbit anti-AKAP8L/HA95 (Cat. No. A301-366A) used at a dilution of 1:200 (1 µg/ml). *Detection:* DAB