



# SZABO SCANDIC

Part of Europa Biosite

## Produktinformation



Forschungsprodukte & Biochemikalien



Zellkultur & Verbrauchsmaterial



Diagnostik & molekulare Diagnostik



Laborgeräte & Service

Weitere Information auf den folgenden Seiten!  
See the following pages for more information!



### Lieferung & Zahlungsart

siehe unsere [Liefer- und Versandbedingungen](#)

### Zuschläge

- Mindermengenzuschlag
- Trockeneiszuschlag
- Gefahrgutzuschlag
- Expressversand

### SZABO-SCANDIC HandelsgmbH

Quellenstraße 110, A-1100 Wien

T. +43(0)1 489 3961-0

F. +43(0)1 489 3961-7

[mail@szabo-scandic.com](mailto:mail@szabo-scandic.com)

[www.szabo-scandic.com](http://www.szabo-scandic.com)

[linkedin.com/company/szaboscandic](https://www.linkedin.com/company/szaboscandic) 

# PARP1 Antibody

Rabbit Polyclonal

Antigen Affinity Purified

Protein ID NP\_001609.1

Catalog No. A301-375A-T

GeneID 142

Lot No. A301-375A-T-2



<b>APPLICATIONS</b>	WB
<b>SPECIES REACTIVITY</b>	Human
<b>PRESUMED REACTIVITY</b>	Based on 100% sequence identity, this antibody is predicted to react with Bovine
<b>AMOUNT</b>	20 µl (2 blots)
<b>CONCENTRATION</b>	40 µg/ml
<b>STORAGE/SHELF LIFE</b>	2 - 8° C / 1 year from date of receipt
<b>PHYSICAL STATE</b>	Liquid
<b>BUFFER</b>	Tris-buffered Saline containing 0.1% BSA and 0.09% Sodium Azide
<b>ISOTYPE</b>	IgG
<b>ORIGIN</b>	USA
<b>PRODUCTION PROCEDURES</b>	Antibody was affinity purified using an epitope specific to PARP1 immobilized on solid support.

The epitope recognized by A301-375A-T maps to a region between residue 1 and 50 of human poly (ADP-ribose) polymerase family, member 1 using the numbering given in entry NP\_001609.1 (GeneID 142).

**APPLICATIONS** Centrifuge tube to remove product from lid. Optimal working dilutions should be determined experimentally by the investigator. Prepare working dilution immediately before use.

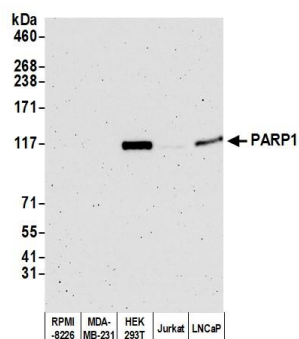
Western Blot 1:1000

Immunoprecipitation Not recommended

**ADDITIONAL INFO** <https://www.bethyl.com/product/A301-375A-T>

Use the link above to view SDS, a current list of citations, and other product specific information.

This document certifies that this product has met all of the quality control standards defined by Bethyl Laboratories, Inc.  
Brian McWilliams, PhD Date: April 5, 2021



**Detection of human PARP1 by western blot.** *Samples:* Whole cell lysate (50  $\mu$ g) from RPMI-8226, MDA-MB-231, HEK293T, Jurkat, and LNCaP cells prepared using NETN lysis buffer. *Antibody:* Affinity purified rabbit anti-PARP1 antibody (A301-375A-T lot 2) used for WB at 1:1,000. *Detection:* Chemiluminescence with an exposure time of 3 minutes.