



SZABO SCANDIC

Part of Europa Biosite

Produktinformation



Forschungsprodukte & Biochemikalien



Zellkultur & Verbrauchsmaterial



Diagnostik & molekulare Diagnostik



Laborgeräte & Service

Weitere Information auf den folgenden Seiten!
See the following pages for more information!



Lieferung & Zahlungsart

siehe unsere [Liefer- und Versandbedingungen](#)

Zuschläge

- Mindermengenzuschlag
- Trockeneiszuschlag
- Gefahrgutzuschlag
- Expressversand

SZABO-SCANDIC HandelsgmbH

Quellenstraße 110, A-1100 Wien

T. +43(0)1 489 3961-0

F. +43(0)1 489 3961-7

mail@szabo-scandic.com

www.szabo-scandic.com

[linkedin.com/company/szaboscandic](https://www.linkedin.com/company/szaboscandic) 

RPA43/TWISTNB Antibody

Rabbit Polyclonal

Antigen Affinity Purified

Protein ID NP_001002926.1

Catalog No. A301-394A-T

GeneID 221830

Lot No. A301-394A-T-1



APPLICATIONS	WB
SPECIES REACTIVITY	Human
AMOUNT	20 µl (2 blots)
CONCENTRATION	40 µg/ml
STORAGE/SHELF LIFE	2 - 8° C / 1 year from date of receipt
PHYSICAL STATE	Liquid
BUFFER	Tris-buffered Saline containing 0.1% BSA and 0.09% Sodium Azide
ISOTYPE	IgG
ORIGIN	USA
PRODUCTION PROCEDURES	Antibody was affinity purified using an epitope specific to RPA43/TWISTNB immobilized on solid support.

The epitope recognized by A301-394A-T maps to a region between residue 288 and 338 of human DNA-directed RNA polymerase I subunit RPA43 (TWIST neighbor) using the numbering given in entry NP_001002926.1 (GeneID 221830).

APPLICATIONS Centrifuge tube to remove product from lid. Optimal working dilutions should be determined experimentally by the investigator. Prepare working dilution immediately before use.

Western Blot 1:1000

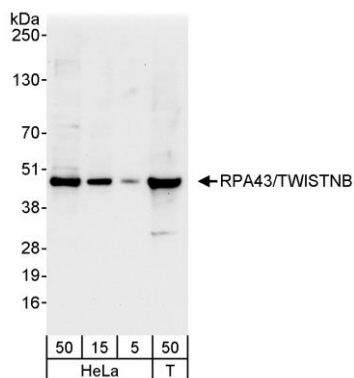
Immunoprecipitation Not recommended

APPLICATION NOTES Western blot of lysates performed using standard western blot reagents and 4-20% SDS-PAGE.

ADDITIONAL INFO <https://www.bethyl.com/product/A301-394A-T>

Use the link above to view SDS, a current list of citations, and other product specific information.

This document certifies that this product has met all of the quality control standards defined by Bethyl Laboratories, Inc.
Eric McIntush, PhD | Chief Scientific Officer Date: June 21, 2019

**Detection of human RPA43/TWISTNB by western blot.**

Samples: Whole cell lysate from HeLa (5, 15, and 50 µg) and HEK293T (T; 50 µg) cells. *Antibody:* Affinity purified rabbit anti-RPA43/TWISTNB antibody A301-394A-T used at 1:1000. *Detection:* Chemiluminescence with an exposure time of 10 seconds.