



# SZABO SCANDIC

Part of Europa Biosite

## Produktinformation



Forschungsprodukte & Biochemikalien



Zellkultur & Verbrauchsmaterial



Diagnostik & molekulare Diagnostik



Laborgeräte & Service

Weitere Information auf den folgenden Seiten!  
See the following pages for more information!



### Lieferung & Zahlungsart

siehe unsere [Liefer- und Versandbedingungen](#)

### Zuschläge

- Mindermengenzuschlag
- Trockeneiszuschlag
- Gefahrgutzuschlag
- Expressversand

### SZABO-SCANDIC HandelsgmbH

Quellenstraße 110, A-1100 Wien

T. +43(0)1 489 3961-0

F. +43(0)1 489 3961-7

[mail@szabo-scandic.com](mailto:mail@szabo-scandic.com)

[www.szabo-scandic.com](http://www.szabo-scandic.com)

[linkedin.com/company/szaboscandic](https://www.linkedin.com/company/szaboscandic) 

# FKBP4/FKBP52 Antibody

Rabbit Polyclonal

Antigen Affinity Purified

Protein ID NP\_002005.1

Catalog No. A301-428A

GeneID 2288

Lot No. A301-428A-1



<b>APPLICATIONS</b>	WB
<b>SPECIES REACTIVITY</b>	Human, Mouse
<b>PRESUMED REACTIVITY</b>	Based on 100% sequence identity, this antibody is predicted to react with Rabbit
<b>AMOUNT</b>	100 µl
<b>CONCENTRATION</b>	200 µg/ml
<b>STORAGE/SHELF LIFE</b>	2 - 8° C / 1 year from date of receipt
<b>PHYSICAL STATE</b>	Liquid
<b>BUFFER</b>	Tris-buffered Saline containing 0.1% BSA and 0.09% Sodium Azide
<b>ISOTYPE</b>	IgG
<b>ORIGIN</b>	USA
<b>PRODUCTION PROCEDURES</b>	Antibody was affinity purified using an epitope specific to FKBP4/FKBP52 immobilized on solid support.

The epitope recognized by A301-428A maps to a region between residue 440 and 459 human FK506 binding protein 4 using the numbering given in entry NP\_002005.1 (GeneID 2288).

Immunoglobulin concentration was determined by extinction coefficient: absorbance at 280 nm of 1.4 equals 1.0 mg of IgG.

**APPLICATIONS** Centrifuge tube to remove product from lid. Optimal working dilutions should be determined experimentally by the investigator. Prepare working dilution immediately before use.

Western Blot 1:2,000 – 1:10,000

Immunoprecipitation Not recommended. Use rabbit anti-FKBP4/FKBP52 antibody A301-427A.

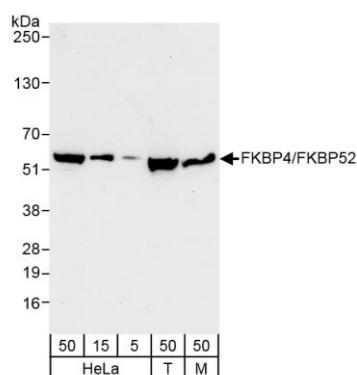
**APPLICATION NOTES** Western blot of lysates performed using standard western blot reagents and 4-20% SDS-PAGE.

**IHC HUMAN CONTROLS** Breast Carcinoma, Prostate Carcinoma

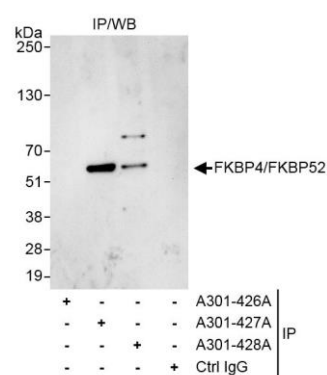
**ADDITIONAL INFO** <https://www.bethyl.com/product/A301-428A>

Use the link above to view SDS, a current list of citations, and other product specific information.

This document certifies that this product has met all of the quality control standards defined by Bethyl Laboratories, Inc.  
Eric McIntush, PhD | Chief Scientific Officer Date: October 18, 2019



**Detection of human and mouse FKBP4/FKBP52 by western blot.** *Samples:* Whole cell lysate from HeLa (5, 15 and 50  $\mu$ g), HEK293T (T; 50  $\mu$ g) and mouse NIH 3T3 (M; 50  $\mu$ g) cells. *Antibodies:* Affinity purified rabbit anti-FKBP4/FKBP52 antibody A301-428A (lot A301-428A-1) used for WB at 0.04  $\mu$ g/ml. *Detection:* Chemiluminescence with exposure time of 10 seconds.



**Detection of human FKBP4/FKBP52 by western blot of immunoprecipitates.** *Samples:* Whole cell lysate (1 mg for IP, 20% of IP loaded) from HeLa cells. *Antibodies:* Affinity purified rabbit anti-FKBP4/FKBP52 antibody A301-428A (lot A301-428A-1) used for IP at 3  $\mu$ g/mg lysate. FKBP4/FKBP52 was also immunoprecipitated by rabbit anti-FKBP4/FKBP52 antibody A301-427A, which recognizes an upstream epitope. For blotting immunoprecipitated FKBP4/FKBP52, A301-428A was used at 1.0  $\mu$ g/ml. *Detection:* Chemiluminescence with exposure time of 3 seconds.