



# SZABO SCANDIC

Part of Europa Biosite

## Produktinformation



Forschungsprodukte & Biochemikalien



Zellkultur & Verbrauchsmaterial



Diagnostik & molekulare Diagnostik



Laborgeräte & Service

Weitere Information auf den folgenden Seiten!  
See the following pages for more information!



### Lieferung & Zahlungsart

siehe unsere [Liefer- und Versandbedingungen](#)

### Zuschläge

- Mindermengenzuschlag
- Trockeneiszuschlag
- Gefahrgutzuschlag
- Expressversand

### SZABO-SCANDIC HandelsgmbH

Quellenstraße 110, A-1100 Wien

T. +43(0)1 489 3961-0

F. +43(0)1 489 3961-7

[mail@szabo-scandic.com](mailto:mail@szabo-scandic.com)

[www.szabo-scandic.com](http://www.szabo-scandic.com)

[linkedin.com/company/szaboscandic](https://www.linkedin.com/company/szaboscandic) 

# FKBP5/FKBP51 Antibody

Rabbit Polyclonal

Antigen Affinity Purified      Protein ID    NP\_004108.1  
Catalog No.    A301-429A-T      GeneID      2289  
Lot No.      A301-429A-T-1



**APPLICATIONS**      IP  
**SPECIES REACTIVITY**      Human  
**PRESUMED REACTIVITY**      Based on 100% sequence identity, this antibody is predicted to react with Orangutan  
**AMOUNT**      10 µl  
**CONCENTRATION**      1000 µg/ml  
**STORAGE/SHELF LIFE**      2 - 8° C / 1 year from date of receipt  
**PHYSICAL STATE**      Liquid  
**BUFFER**      Tris-citrate/phosphate buffer, pH 7 to 8 containing 0.09% Sodium Azide  
**ISOTYPE**      IgG  
**ORIGIN**      USA  
**PRODUCTION PROCEDURES**      Antibody was affinity purified using an epitope specific to FKBP5/FKBP51 immobilized on solid support.

The epitope recognized by A301-429A-T maps to a region between residue 225 and 275 of human FK506 binding protein 5 (51 kDa FK506-binding protein) using the numbering given in entry NP\_004108.1 (GeneID 2289).

Immunoglobulin concentration was determined by extinction coefficient: absorbance at 280 nm of 1.4 equals 1.0 mg of IgG.

**APPLICATIONS**      Centrifuge tube to remove product from lid. Optimal working dilutions should be determined experimentally by the investigator. Prepare working dilution immediately before use.

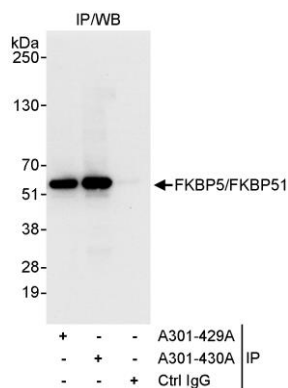
Western Blot      Not recommended. Use rabbit anti-FKBP5/FKBP51 antibody A301-430A-T.

Immunoprecipitation      2 - 5 µg/mg lysate

**APPLICATION NOTES**      Western blot of immunoprecipitates performed using Normal Pig Serum (Cat. No. S100-020), Goat anti-Rabbit Light Chain HRP Conjugate (Cat. No. A120-113P) and 4-20% SDS-PAGE (link to IP-western blot protocol in Additional Info section below).

**ADDITIONAL INFO**      <https://www.bethyl.com/product/A301-429A-T>  
Use the link above to view SDS, a current list of citations, and other product specific information.  
IP-western blot protocol: [https://www.bethyl.com/content/protocol\\_IP\\_WB](https://www.bethyl.com/content/protocol_IP_WB)

This document certifies that this product has met all of the quality control standards defined by Bethyl Laboratories, Inc.  
Eric McIntush, PhD | Chief Scientific Officer      Date: June 21, 2019



**Detection of human FKBP5/FKBP51 by western blot of immunoprecipitates.** *Samples:* Whole cell lysate (1 mg for IP, 20% of IP loaded) from HeLa cells. *Antibody:* Affinity purified rabbit anti-FKBP5/FKBP51 antibody A301-429A-T used for IP at 3 µg/mg lysate. FKBP5/FKBP51 was also immunoprecipitated by rabbit anti-FKBP5/FKBP51 antibody A301-430A, which recognizes a downstream epitope. For blotting immunoprecipitated FKBP5/FKBP51, A301-430A was used at 1 µg/ml. *Detection:* Chemiluminescence with an exposure time of 3 seconds.