



# SZABO SCANDIC

Part of Europa Biosite

## Produktinformation



Forschungsprodukte & Biochemikalien



Zellkultur & Verbrauchsmaterial



Diagnostik & molekulare Diagnostik



Laborgeräte & Service

Weitere Information auf den folgenden Seiten!  
See the following pages for more information!



### Lieferung & Zahlungsart

siehe unsere [Liefer- und Versandbedingungen](#)

### Zuschläge

- Mindermengenzuschlag
- Trockeneiszuschlag
- Gefahrgutzuschlag
- Expressversand

### SZABO-SCANDIC HandelsgmbH

Quellenstraße 110, A-1100 Wien

T. +43(0)1 489 3961-0

F. +43(0)1 489 3961-7

[mail@szabo-scandic.com](mailto:mail@szabo-scandic.com)

[www.szabo-scandic.com](http://www.szabo-scandic.com)

[linkedin.com/company/szaboscandic](https://www.linkedin.com/company/szaboscandic) 

# CCDC131 Antibody

Rabbit Polyclonal

Antigen Affinity Purified	RefSeq ID	NP_659419.3
Catalog No. A301-457A-T	Uniprot ID	O60293
Lot No. 4	GeneID	196441

---

<b>APPLICATIONS</b>	WB, IP
<b>SPECIES REACTIVITY</b>	Human
<b>AMOUNT</b>	10 µl
<b>CONCENTRATION</b>	200 µg/ml
<b>STORAGE/SHELF LIFE</b>	2 – 8°C / 1 year from date of receipt
<b>PHYSICAL STATE</b>	Liquid
<b>BUFFER</b>	Tris-buffered Saline containing 0.1% BSA and 0.09% Sodium Azide
<b>ISOTYPE</b>	IgG
<b>ORIGIN</b>	USA
<b>PRODUCTION PROCEDURES</b>	Antibody was affinity purified using an epitope specific to CCDC131 immobilized on solid support.

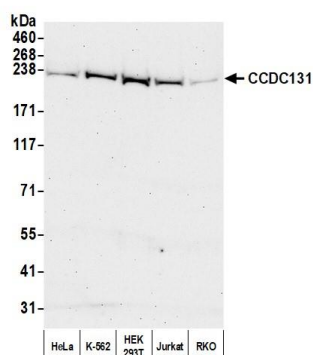
The epitope recognized by A301-457A-T maps to a region between residue 1939 and 1989 of human coiled-coil domain containing 131 using the numbering given in entry NP\_659419.3 (GeneID 196441).

**APPLICATIONS** Centrifuge tube to remove product from lid. Optimal working dilutions should be determined experimentally by the investigator. Prepare working dilution immediately before use.

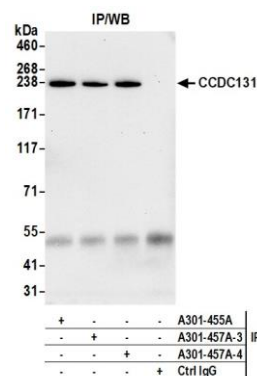
Western Blot	1:1,000 – 1:5,000
Immunoprecipitation	2 – 10 µg/mg lysate

**ADDITIONAL INFO** <https://www.fortislife.com/p/A301-457A-T>  
Use the link above to view SDS, a current list of citations, and other product specific information.

This document certifies that this product has met all of the quality control standards defined by Bethyl Laboratories, Inc.  
Michael Spencer, PhD Date: May 4, 2023



**Detection of human CCDC131 by western blot.** *Samples:* Whole cell lysate (50  $\mu$ g) from HeLa, K-562, HEK293T, Jurkat, and RKO cells prepared using NETN lysis buffer. *Antibody:* Affinity purified rabbit anti-CCDC131 antibody (A301-457A lot 4) used for WB at 0.04  $\mu$ g/ml. *Detection:* Chemiluminescence with an exposure time of 3 minutes.



**Detection of human CCDC131 by western blot of immunoprecipitates.** *Samples:* Whole cell lysate (1.0 mg per IP reaction; 10% of IP loaded) from HEK293T cells prepared using NETN lysis buffer. *Antibodies:* Affinity purified rabbit anti-CCDC131 antibody (A301-457A lot 4) used for IP at 6  $\mu$ g per reaction. CCDC131 was also immunoprecipitated by a previous lot of this antibody (A301-457A lot 3) and a second antibody against a different epitope of CCDC131 (A301-455A). For blotting immunoprecipitated CCDC131, A301-457A was used at 0.04  $\mu$ g/ml. *Detection:* Chemiluminescence with an exposure time of 75 seconds.