



SZABO SCANDIC

Part of Europa Biosite

Produktinformation



Forschungsprodukte & Biochemikalien



Zellkultur & Verbrauchsmaterial



Diagnostik & molekulare Diagnostik



Laborgeräte & Service

Weitere Information auf den folgenden Seiten!
See the following pages for more information!



Lieferung & Zahlungsart

siehe unsere [Liefer- und Versandbedingungen](#)

Zuschläge

- Mindermengenzuschlag
- Trockeneiszuschlag
- Gefahrgutzuschlag
- Expressversand

SZABO-SCANDIC HandelsgmbH

Quellenstraße 110, A-1100 Wien

T. +43(0)1 489 3961-0

F. +43(0)1 489 3961-7

mail@szabo-scandic.com

www.szabo-scandic.com

[linkedin.com/company/szaboscandic](https://www.linkedin.com/company/szaboscandic) 

CDC2L5 Antibody

Rabbit Polyclonal

Antigen Affinity Purified Protein ID NP_003709.3

Catalog No. A301-458A-T GeneID 8621

Lot No. A301-458A-T-2

APPLICATIONS	WB, IP
SPECIES REACTIVITY	Human
PRESUMED REACTIVITY	Based on 100% sequence identity, this antibody is predicted to react with Mouse and Bovine
AMOUNT	10 µl
CONCENTRATION	200 µg/ml
STORAGE/SHELF LIFE	2 - 8°C / 1 year from date of receipt
PHYSICAL STATE	Liquid
BUFFER	Tris-buffered Saline containing 0.1% BSA and 0.09% Sodium Azide
ISOTYPE	IgG
ORIGIN	USA
PRODUCTION PROCEDURES	Antibody was affinity purified using an epitope specific to CDC2L5 immobilized on solid support.

The epitope recognized by A301-458A-T maps to a region between residue 1125 and 1175 of human cell division cycle 2-like 5 using the numbering given in entry NP_003709.3 (GeneID 8621).

APPLICATIONS Centrifuge tube to remove product from lid. Optimal working dilutions should be determined experimentally by the investigator. Prepare working dilution immediately before use.

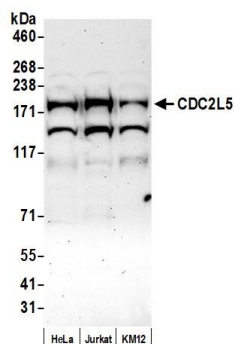
Western Blot 1:2,000 - 1:10,000

Immunoprecipitation 2 - 10 µg/mg lysate

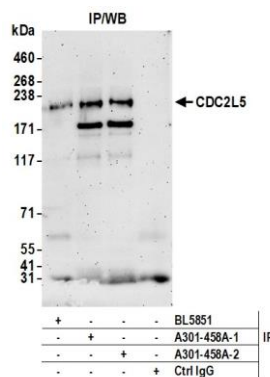
ADDITIONAL INFO <https://www.bethyl.com/product/A301-458A-T>

Use the link above to view SDS, a current list of citations, and other product specific information. IP-western blot protocol: https://www.bethyl.com/content/protocol_IP_WB

This document certifies that this product has met all of the quality control standards defined by Bethyl Laboratories, Inc.
Michael Spencer, PhD Date: April 25, 2022



Detection of human CDC2L5 by western blot. *Samples:* Whole cell lysate (50 µg) from HeLa, Jurkat, and KM12 cells prepared using NETN lysis buffer. *Antibody:* Affinity purified rabbit anti-CDC2L5 antibody (A301-458A-2) used for WB at 0.1 µg/ml. *Detection:* Chemiluminescence with an exposure time of 75 seconds.



Detection of human CDC2L5 by western blot of immunoprecipitates. *Samples:* Whole cell lysate (1.0 mg per IP reaction; 20% of IP loaded) from HeLa cells prepared using NETN lysis buffer. *Antibodies:* Affinity purified rabbit anti-CDC2L5 antibody (A301-458A lot 2) used for IP at 6 µg per reaction. CDC2L5 was also immunoprecipitated by a previous lot of this antibody (A301-458A lot 1) and a second antibody against a different epitope of CDC2L5 (BL5851). For blotting immunoprecipitated CDC2L5, A301-458A was used at 0.04 µg/ml. *Detection:* Chemiluminescence with an exposure time of 3 minutes.