



SZABO SCANDIC

Part of Europa Biosite

Produktinformation



Forschungsprodukte & Biochemikalien



Zellkultur & Verbrauchsmaterial



Diagnostik & molekulare Diagnostik



Laborgeräte & Service

Weitere Information auf den folgenden Seiten!
See the following pages for more information!



Lieferung & Zahlungsart

siehe unsere [Liefer- und Versandbedingungen](#)

Zuschläge

- Mindermengenzuschlag
- Trockeneiszuschlag
- Gefahrgutzuschlag
- Expressversand

SZABO-SCANDIC HandelsgmbH

Quellenstraße 110, A-1100 Wien

T. +43(0)1 489 3961-0

F. +43(0)1 489 3961-7

mail@szabo-scandic.com

www.szabo-scandic.com

[linkedin.com/company/szaboscandic](https://www.linkedin.com/company/szaboscandic) 

JHDM1A Antibody

Rabbit Polyclonal

Antigen Affinity Purified Protein ID NP_036440.1

Catalog No. A301-475A-T GeneID 22992

Lot No. A301-475A-T-3

APPLICATIONS WB, IP, IHC

SPECIES REACTIVITY Human

AMOUNT 10 μ l

CONCENTRATION 200 μ g/ml

STORAGE/SHELF LIFE 2 – 8°C / 1 year from date of receipt

PHYSICAL STATE Liquid

BUFFER Tris-buffered Saline containing 0.1% BSA and 0.09% Sodium Azide

ISOTYPE IgG

ORIGIN USA

PRODUCTION PROCEDURES Antibody was affinity purified using an epitope specific to JHDM1A immobilized on solid support.

The epitope recognized by A301-475A-T maps to a region between residue 825 and 875 of human JmjC domain-containing histone demethylation protein 1A using the numbering given in entry NP_036440.1 (GeneID 22992).

APPLICATIONS Centrifuge tube to remove product from lid. Optimal working dilutions should be determined experimentally by the investigator. Prepare working dilution immediately before use.

Western Blot 1:2,000 – 1:10,000

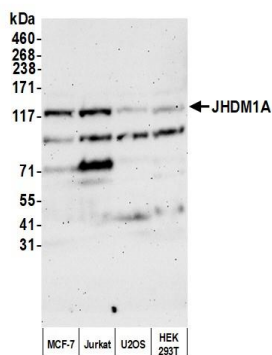
Immunoprecipitation 2 – 10 μ g/mg lysate

Immunohistochemistry 1:100 to 1:500. Epitope retrieval with citrate buffer pH6.0 is recommended for FFPE tissue sections.

ADDITIONAL INFO <https://www.fortislife.com/p/A301-475A-T>

Use the link above to view SDS, a current list of citations, and other product specific information.

This document certifies that this product has met all of the quality control standards defined by Bethyl Laboratories, Inc.
Michael Spencer, PhD Date: August 8, 2022



Detection of human JHDM1A by western blot. *Samples:* Whole cell lysate (50 μ g) from MCF-7, Jurkat, U2OS, and HEK293T cells prepared using NETN lysis buffer. *Antibody:* Affinity purified rabbit anti-JHDM1A antibody (A301-475A-T lot 3) used for WB at 1:1000. *Detection:* Chemiluminescence with an exposure time of 3 minutes.