



# SZABO SCANDIC

Part of Europa Biosite

## Produktinformation



Forschungsprodukte & Biochemikalien



Zellkultur & Verbrauchsmaterial



Diagnostik & molekulare Diagnostik



Laborgeräte & Service

Weitere Information auf den folgenden Seiten!  
See the following pages for more information!



### Lieferung & Zahlungsart

siehe unsere [Liefer- und Versandbedingungen](#)

### Zuschläge

- Mindermengenzuschlag
- Trockeneiszuschlag
- Gefahrgutzuschlag
- Expressversand

### SZABO-SCANDIC HandelsgmbH

Quellenstraße 110, A-1100 Wien

T. +43(0)1 489 3961-0

F. +43(0)1 489 3961-7

[mail@szabo-scandic.com](mailto:mail@szabo-scandic.com)

[www.szabo-scandic.com](http://www.szabo-scandic.com)

[linkedin.com/company/szaboscandic](https://www.linkedin.com/company/szaboscandic) 

# JHDM1A Antibody

Rabbit Polyclonal

Antigen Affinity Purified

RefSeq ID NP\_036440.1

Catalog No. A301-475A

Uniprot ID Q9Y2K7

Lot No. 3

GeneID 22992

**APPLICATIONS** WB, IP, IHC

**SPECIES REACTIVITY** Human

**AMOUNT** 100 µl

**CONCENTRATION** 200 µg/ml

**STORAGE/SHELF LIFE** 2 – 8°C / 1 year from date of receipt

**PHYSICAL STATE** Liquid

**BUFFER** Tris-buffered Saline containing 0.1% BSA and 0.09% Sodium Azide

**ISOTYPE** IgG

**ORIGIN** USA

**PRODUCTION PROCEDURES** Antibody was affinity purified using an epitope specific to JHDM1A immobilized on solid support.

The epitope recognized by A301-475A maps to a region between residue 825 and 875 of human JmjC domain-containing histone demethylation protein 1A using the numbering given in entry NP\_036440.1 (GeneID 22992).

Immunoglobulin concentration was determined by extinction coefficient: absorbance at 280 nm of 1.4 equals 1.0 mg of IgG.

**APPLICATIONS** Centrifuge tube to remove product from lid. Optimal working dilutions should be determined experimentally by the investigator. Prepare working dilution immediately before use.

Western Blot 1:2,000 – 1:10,000

Immunoprecipitation 2 – 10 µg/mg lysate

Immunohistochemistry 1:100 to 1:500. Epitope retrieval with citrate buffer pH6.0 is recommended for FFPE tissue sections.

**IHC HUMAN CONTROLS** Breast Carcinoma, Ovarian Carcinoma, Skin Basal Cell Carcinoma, Stomach Adenocarcinoma

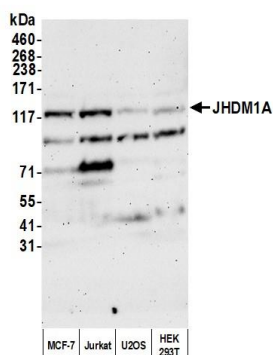
**ADDITIONAL INFO** <https://www.fortislife.com/p/A301-475A>

Use the link above to view SDS, a current list of citations, and other product specific information.

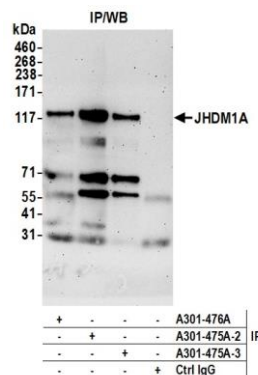
This document certifies that this product has met all of the quality control standards defined by Bethyl Laboratories, Inc.

Michael Spencer, PhD

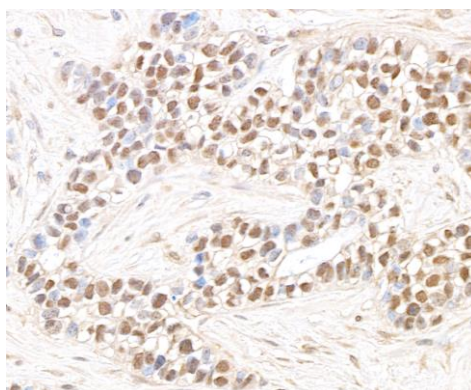
Date: March 23, 2023



**Detection of human JHDM1A by western blot.** *Samples:* Whole cell lysate (50 µg) from MCF-7, Jurkat, U2OS, and HEK293T cells prepared using NETN lysis buffer. *Antibody:* Affinity purified rabbit anti-JHDM1A antibody (A301-475A lot 3) used for WB at 0.1 µg/ml. *Detection:* Chemiluminescence with an exposure time of 3 minutes.



**Detection of human JHDM1A by western blot of immunoprecipitates.** *Samples:* Whole cell lysate (1.0 mg per IP reaction; 20% of IP loaded) from Jurkat cells prepared using NETN lysis buffer. *Antibodies:* Affinity purified rabbit anti-JHDM1A antibody (A301-475A lot 3) used for IP at 6 µg per reaction. JHDM1A was also immunoprecipitated by a previous lot of this antibody (A301-475A lot 2) and a second antibody against a different epitope of JHDM1A (A301-476A). For blotting immunoprecipitated JHDM1A, A301-475A was used at 0.2 µg/ml. *Detection:* Chemiluminescence with an exposure time of 3 minutes.



**Detection of human JHDM1A by immunohistochemistry.** *Sample:* FFPE section of human breast cancer. *Antibody:* Affinity purified rabbit anti-JHDM1A (A301-475A Lot3) used at a dilution of 1:200 (1 µg/ml). *Detection:* DAB