



SZABO SCANDIC

Part of Europa Biosite

Produktinformation



Forschungsprodukte & Biochemikalien



Zellkultur & Verbrauchsmaterial



Diagnostik & molekulare Diagnostik



Laborgeräte & Service

Weitere Information auf den folgenden Seiten!
See the following pages for more information!



Lieferung & Zahlungsart

siehe unsere [Liefer- und Versandbedingungen](#)

Zuschläge

- Mindermengenzuschlag
- Trockeneiszuschlag
- Gefahrgutzuschlag
- Expressversand

SZABO-SCANDIC HandelsgmbH

Quellenstraße 110, A-1100 Wien

T. +43(0)1 489 3961-0

F. +43(0)1 489 3961-7

mail@szabo-scandic.com

www.szabo-scandic.com

[linkedin.com/company/szaboscandic](https://www.linkedin.com/company/szaboscandic) 

SMG1 Antibody

Rabbit Polyclonal

Antigen Affinity Purified	RefSeq ID	NP_055907.3
Catalog No. A301-535A-T	Uniprot ID	Q96Q15
Lot No. 2	GeneID	23049

APPLICATIONS	WB
SPECIES REACTIVITY	Human
PRESUMED REACTIVITY	Based on 100% sequence identity, this antibody is predicted to react with Mouse
AMOUNT	10 µl
CONCENTRATION	1000 µg/ml
STORAGE/SHELF LIFE	2 – 8°C / 1 year from date of receipt
PHYSICAL STATE	Liquid
BUFFER	Tris-citrate/phosphate buffer, pH 7 to 8 containing 0.09% Sodium Azide
ISOTYPE	IgG
ORIGIN	USA
PRODUCTION PROCEDURES	Antibody was affinity purified using an epitope specific to SMG1 immobilized on solid support.

The epitope recognized by A301-535A maps to a region between residue 1250 and 1300 of human PI-3-Kinase-related kinase SMG1 using the numbering given in entry NP_055907.3 (GeneID 23049).

Immunoglobulin concentration was determined using Beer's Law where 1mg/mL IgG has an A280 of 1.4.

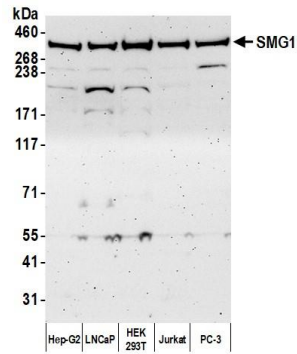
APPLICATIONS Centrifuge tube to remove product from lid. Optimal working dilutions should be determined experimentally by the investigator. Prepare working dilution immediately before use.

Western Blot 1:1000 – 1:10,000 (3-8% Tris-acetate gel recommended)

ADDITIONAL INFO <https://www.fortislife.com/p/A301-535A-T>

Use the link above to view SDS, a current list of citations, and other product specific information.

This document certifies that this product has met all of the quality control standards defined by Bethyl Laboratories, Inc.
Michael Spencer, PhD Date: January 31, 2024



Detection of human SMG1 by western blot. *Samples:* Whole cell lysate (50 μ g) from Hep-G2, LNCaP, HEK293T, Jurkat, and PC-3 cells prepared using NETN lysis buffer. *Antibody:* Affinity purified rabbit anti-SMG1 antibody (A301-535A lot 2) used for WB at 1 μ g/ml. *Detection:* Chemiluminescence with an exposure time of 3 minutes.