



SZABO SCANDIC

Part of Europa Biosite

Produktinformation



Forschungsprodukte & Biochemikalien



Zellkultur & Verbrauchsmaterial



Diagnostik & molekulare Diagnostik



Laborgeräte & Service

Weitere Information auf den folgenden Seiten!
See the following pages for more information!



Lieferung & Zahlungsart

siehe unsere [Liefer- und Versandbedingungen](#)

Zuschläge

- Mindermengenzuschlag
- Trockeneiszuschlag
- Gefahrgutzuschlag
- Expressversand

SZABO-SCANDIC HandelsgmbH

Quellenstraße 110, A-1100 Wien

T. +43(0)1 489 3961-0

F. +43(0)1 489 3961-7

mail@szabo-scandic.com

www.szabo-scandic.com

[linkedin.com/company/szaboscandic](https://www.linkedin.com/company/szaboscandic) 

Myosin-10 Antibody

Rabbit Polyclonal

Antigen Affinity Purified	RefSeq ID	NP_005955.3
Catalog No. A302-043A-T	Uniprot ID	P35580
Lot No. 1	GeneID	4628

APPLICATIONS	WB
SPECIES REACTIVITY	Human, Mouse
PRESUMED REACTIVITY	Based on 100% sequence identity, this antibody is predicted to react with Rat and Rabbit
AMOUNT	10 µl
CONCENTRATION	1000 µg/ml
STORAGE/SHELF LIFE	2 – 8°C / 1 year from date of receipt
PHYSICAL STATE	Liquid
BUFFER	Tris-citrate/phosphate buffer, pH 7 to 8 containing 0.09% Sodium Azide
ISOTYPE	IgG
ORIGIN	USA
PRODUCTION PROCEDURES	Antibody was affinity purified using an epitope specific to Myosin-10 immobilized on solid support.

The epitope recognized by A302-043A maps to a region between residue 1955 and 1976 of human myosin, heavy chain 10, non-muscle using the numbering given in entry NP_005955.1 (GeneID 4628).

Immunoglobulin concentration was determined using Beer's Law where 1mg/mL IgG has an A280 of 1.4.

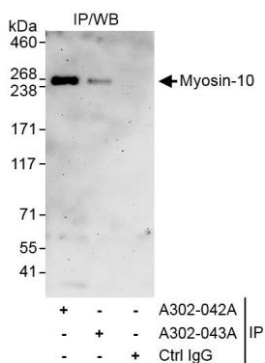
APPLICATIONS Centrifuge tube to remove product from lid. Optimal working dilutions should be determined experimentally by the investigator. Prepare working dilution immediately before use.

Western Blot 1:2000 – 1:10,000 (3-8% Tris-acetate gel recommended)

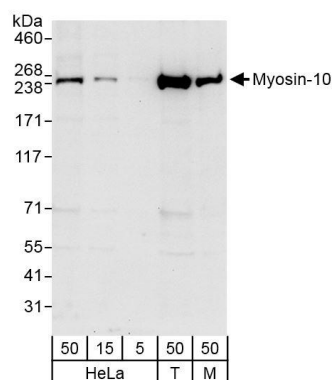
ADDITIONAL INFO <https://www.fortislife.com/p/A302-043A-T>

Use the link above to view SDS, a current list of citations, and other product specific information.

This document certifies that this product has met all of the quality control standards defined by Bethyl Laboratories, Inc.
Michael Spencer, PhD Date: January 31, 2024



Detection of human Myosin-10 by western blot of immunoprecipitates. *Samples:* Whole cell lysate from HeLa (1 mg for IP, 20% of IP loaded) from HeLa cells. *Antibodies:* Affinity purified rabbit anti-Myosin-10 antibody A302-043A (lot 302-043A-1) used for IP at 3 µg/mg lysate. Myosin-10 was also immunoprecipitated by rabbit anti-Myosin-10 antibody A302-042A, which recognizes an upstream epitope. For blotting immunoprecipitated Myosin-10, A302-043A was used at 1.0 µg/ml. *Detection:* Chemiluminescence with exposure time of 3 minutes.



Detection of human and mouse Myosin-10 by western blot. *Samples:* Whole cell lysate from HeLa (5, 15 and 50 µg), HEK293T (T; 50 µg) and mouse NIH 3T3 (M; 50µg) cells. *Antibodies:* Affinity purified rabbit anti-Myosin-10 antibody A302-043A (lot 302-043A-1) used for WB at 1 µg/ml. *Detection:* Chemiluminescence with exposure time of 10 seconds.