



SZABO SCANDIC

Part of Europa Biosite

Produktinformation



Forschungsprodukte & Biochemikalien



Zellkultur & Verbrauchsmaterial



Diagnostik & molekulare Diagnostik



Laborgeräte & Service

Weitere Information auf den folgenden Seiten!
See the following pages for more information!



Lieferung & Zahlungsart

siehe unsere [Liefer- und Versandbedingungen](#)

Zuschläge

- Mindermengenzuschlag
- Trockeneiszuschlag
- Gefahrgutzuschlag
- Expressversand

SZABO-SCANDIC HandelsgmbH

Quellenstraße 110, A-1100 Wien

T. +43(0)1 489 3961-0

F. +43(0)1 489 3961-7

mail@szabo-scandic.com

www.szabo-scandic.com

[linkedin.com/company/szaboscandic](https://www.linkedin.com/company/szaboscandic) 

ASF Antibody

Rabbit Polyclonal

Antigen Affinity Purified	RefSeq ID	NP_008855.1
Catalog No. A302-052A-T	Uniprot ID	Q07955
Lot No. 3	GeneID	6426

APPLICATIONS	WB, IP
SPECIES REACTIVITY	Human
PRESUMED REACTIVITY	Based on 100% sequence identity, this antibody is predicted to react with Mouse, X. tropicalis, Chicken, Bovine, Pig and Orangutan
AMOUNT	10 µl
CONCENTRATION	1000 µg/ml
STORAGE/SHELF LIFE	2 – 8°C / 1 year from date of receipt
PHYSICAL STATE	Liquid
BUFFER	Tris-citrate/phosphate buffer, pH 7 to 8 containing 0.09% Sodium Azide
ISOTYPE	IgG
ORIGIN	USA
PRODUCTION PROCEDURES	Antibody was affinity purified using an epitope specific to ASF immobilized on solid support.

The epitope recognized by A302-052A maps to a region between residue 1 and 50 of human alternative splicing factor (splicing factor, arginine/serine-rich 1) using the numbering given in entry NP_008855.1 (GeneID 6426).

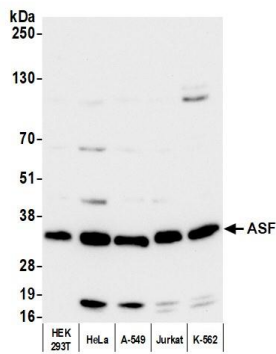
Immunoglobulin concentration was determined using Beer's Law where 1mg/mL IgG has an A280 of 1.4.

APPLICATIONS	Centrifuge tube to remove product from lid. Optimal working dilutions should be determined experimentally by the investigator. Prepare working dilution immediately before use.
---------------------	---

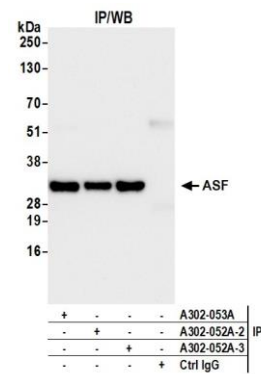
Western Blot	1:2000 – 1:10,000
Immunoprecipitation	6 µg/mg lysate

ADDITIONAL INFO	https://www.fortislife.com/p/A302-052A-T Use the link above to view SDS, a current list of citations, and other product specific information.
------------------------	---

This document certifies that this product has met all of the quality control standards defined by Bethyl Laboratories, Inc.
Michael Spencer, PhD Date: February 12, 2024



Detection of human ASF by western blot. *Samples:* Whole cell lysate (10 µg) from HEK293T, HeLa, A-549, Jurkat, and K-562 cells prepared using NETN lysis buffer. *Antibody:* Affinity purified rabbit anti-ASF antibody (A302-052A lot 3) used for WB at 0.1 µg/ml. *Detection:* Chemiluminescence with an exposure time of 30 seconds.



Detection of human ASF by western blot of immunoprecipitates. *Samples:* Whole cell lysate (1 mg per IP; 5% of IP loaded) from HeLa cells prepared using NETN lysis buffer. *Antibodies:* Affinity purified rabbit anti-ASF antibody (A302-052A lot 3) used for IP at 6 µg per reaction. ASF was also immunoprecipitated by a previous lot of this antibody (A302-052A lot 2) and a second antibody against a different epitope of ASF (A302-053A). For blotting immunoprecipitated ASF, A302-052A was used at 0.1 µg/ml. *Detection:* Chemiluminescence with an exposure time of 30 seconds.