



# SZABO SCANDIC

Part of Europa Biosite

## Produktinformation



Forschungsprodukte & Biochemikalien



Zellkultur & Verbrauchsmaterial



Diagnostik & molekulare Diagnostik



Laborgeräte & Service

Weitere Information auf den folgenden Seiten!  
See the following pages for more information!



### Lieferung & Zahlungsart

siehe unsere [Liefer- und Versandbedingungen](#)

### Zuschläge

- Mindermengenzuschlag
- Trockeneiszuschlag
- Gefahrgutzuschlag
- Expressversand

### SZABO-SCANDIC HandelsgmbH

Quellenstraße 110, A-1100 Wien

T. +43(0)1 489 3961-0

F. +43(0)1 489 3961-7

[mail@szabo-scandic.com](mailto:mail@szabo-scandic.com)

[www.szabo-scandic.com](http://www.szabo-scandic.com)

[linkedin.com/company/szaboscandic](https://www.linkedin.com/company/szaboscandic) 

# CEP128 Antibody

Rabbit Polyclonal

Antigen Affinity Purified	RefSeq ID	NP_689659.2
Catalog No. A303-348A-T	Uniprot ID	Q6ZU80
Lot No. 1	GeneID	145508

---

<b>APPLICATIONS</b>	WB, IP
<b>SPECIES REACTIVITY</b>	Human
<b>AMOUNT</b>	10 µl
<b>CONCENTRATION</b>	1000 µg/ml
<b>STORAGE/SHELF LIFE</b>	2 - 8°C / 1 year from date of receipt
<b>PHYSICAL STATE</b>	Liquid
<b>BUFFER</b>	Tris-citrate/phosphate buffer, pH 7 to 8 containing 0.09% Sodium Azide
<b>ISOTYPE</b>	IgG
<b>ORIGIN</b>	USA
<b>PRODUCTION PROCEDURES</b>	Antibody was affinity purified using an epitope specific to CEP128 immobilized on solid support.

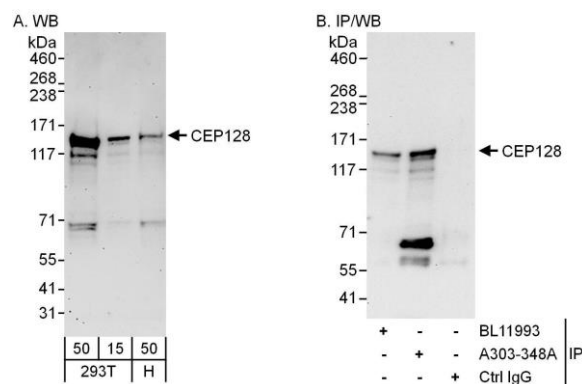
The epitope recognized by A303-348A maps to a region between residue 1044 and 1094 of human Centrosomal Protein 128kDa using the numbering given in entry NP\_689659.2 (GeneID 145508).

Immunoglobulin concentration was determined using Beer's Law where 1mg/mL IgG has an A280 of 1.4.

<b>APPLICATIONS</b>	Centrifuge tube to remove product from lid. Optimal working dilutions should be determined experimentally by the investigator. Prepare working dilution immediately before use.
	Western Blot                      1:2000 - 1:10,000
	Immunoprecipitation          6 µg/mg lysate

<b>ADDITIONAL INFO</b>	<a href="https://www.fortislife.com/p/A303-348A-T">https://www.fortislife.com/p/A303-348A-T</a> Use the link above to view SDS, a current list of citations, and other product specific information.
------------------------	---

This document certifies that this product has met all of the quality control standards defined by Bethyl Laboratories, Inc.  
Michael Spencer, PhD Date: January 31, 2024



**Detection of human CEP128 by western blot and immunoprecipitation.** *Samples:* Whole cell lysate from HEK293T (15 and 50  $\mu$ g for WB; 1 mg for IP, 20% of IP loaded) and HeLa (H; 50  $\mu$ g) cells. *Antibodies:* Affinity purified rabbit anti-CEP128 antibody A303-348A used for WB at 1  $\mu$ g/ml (A and B) and used for IP at 6  $\mu$ g/mg lysate. CEP128 was also immunoprecipitated by rabbit anti-CEP128 antibody BL11993, which recognizes an upstream epitope. *Detection:* Chemiluminescence with exposure times of 3 minutes (A) and 30 seconds (B).