



SZABO SCANDIC

Part of Europa Biosite

Produktinformation



Forschungsprodukte & Biochemikalien



Zellkultur & Verbrauchsmaterial



Diagnostik & molekulare Diagnostik



Laborgeräte & Service

Weitere Information auf den folgenden Seiten!
See the following pages for more information!



Lieferung & Zahlungsart

siehe unsere [Liefer- und Versandbedingungen](#)

Zuschläge

- Mindermengenzuschlag
- Trockeneiszuschlag
- Gefahrgutzuschlag
- Expressversand

SZABO-SCANDIC HandelsgmbH

Quellenstraße 110, A-1100 Wien

T. +43(0)1 489 3961-0

F. +43(0)1 489 3961-7

mail@szabo-scandic.com

www.szabo-scandic.com

[linkedin.com/company/szaboscandic](https://www.linkedin.com/company/szaboscandic) 

Dysbindin1 Antibody

Rabbit Polyclonal

Antigen Affinity Purified	RefSeq ID	NP_898861.1
Catalog No. A303-360A-T	Uniprot ID	Q96EV8
Lot No. 1	GeneID	84062

APPLICATIONS	WB, IP
SPECIES REACTIVITY	Human
AMOUNT	10 µl
CONCENTRATION	1000 µg/ml
STORAGE/SHELF LIFE	2 - 8°C / 1 year from date of receipt
PHYSICAL STATE	Liquid
BUFFER	Tris-citrate/phosphate buffer, pH 7 to 8 containing 0.09% Sodium Azide
ISOTYPE	IgG
ORIGIN	USA
PRODUCTION PROCEDURES	Antibody was affinity purified using an epitope specific to Dysbindin1 immobilized on solid support.

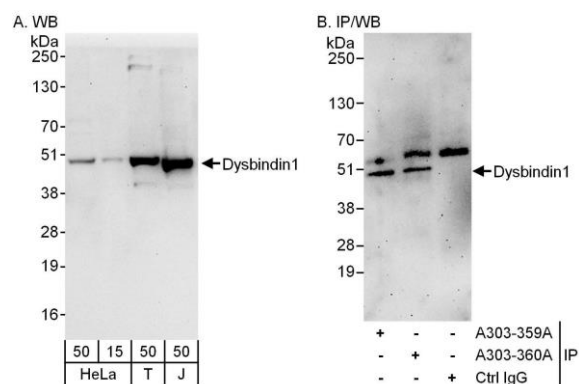
The epitope recognized by A303-360A maps to a region between residue 301 and 351 of human Dystrobrevin Binding Protein 1 using the numbering given in entry NP_115498.2 (GeneID 84062).

Immunoglobulin concentration was determined using Beer's Law where 1 mg/mL IgG has an A280 of 1.4.

APPLICATIONS	Centrifuge tube to remove product from lid. Optimal working dilutions should be determined experimentally by the investigator. Prepare working dilution immediately before use.
	Western Blot 1:500 - 1:2500
	Immunoprecipitation 6 µg/mg lysate

ADDITIONAL INFO	https://www.fortislifecom.com/p/A303-360A-T Use the link above to view SDS, a current list of citations, and other product specific information.
------------------------	---

This document certifies that this product has met all of the quality control standards defined by Bethyl Laboratories, Inc.
Michael Spencer, PhD Date: January 31, 2024



Detection of human Dysbindin1 by western blot and immunoprecipitation. *Samples:* Whole cell lysate from HeLa (15 and 50 μ g for WB; 1 mg for IP, 20% of IP loaded), HEK293T (T; 50 μ g), and Jurkat (J; 50 μ g) cells. *Antibodies:* Affinity purified rabbit anti-Dysbindin1 antibody A303-360A used for WB at 1 μ g/ml (A and B) and used for IP at 6 μ g/mg lysate. Dysbindin1 was also immunoprecipitated by rabbit anti-Dysbindin1 antibody A303-359A, which recognizes an upstream epitope. *Detection:* Chemiluminescence with exposure times of 30 seconds (A) and 3 minutes (B).