



SZABO SCANDIC

Part of Europa Biosite

Produktinformation



Forschungsprodukte & Biochemikalien



Zellkultur & Verbrauchsmaterial



Diagnostik & molekulare Diagnostik



Laborgeräte & Service

Weitere Information auf den folgenden Seiten!
See the following pages for more information!



Lieferung & Zahlungsart

siehe unsere [Liefer- und Versandbedingungen](#)

Zuschläge

- Mindermengenzuschlag
- Trockeneiszuschlag
- Gefahrgutzuschlag
- Expressversand

SZABO-SCANDIC HandelsgmbH

Quellenstraße 110, A-1100 Wien

T. +43(0)1 489 3961-0

F. +43(0)1 489 3961-7

mail@szabo-scandic.com

www.szabo-scandic.com

[linkedin.com/company/szaboscandic](https://www.linkedin.com/company/szaboscandic) 

SNRNP200 Antibody

Rabbit Polyclonal

Antigen Affinity Purified	RefSeq ID	NP_054733.2
Catalog No. A303-454A	Uniprot ID	O75643
Lot No. 2	GeneID	23020

APPLICATIONS	WB, IP, IHC
SPECIES REACTIVITY	Human, Mouse
PRESUMED REACTIVITY	Based on 100% sequence identity, this antibody is predicted to react with Rat
AMOUNT	100 µl
CONCENTRATION	1000 µg/ml
STORAGE/SHELF LIFE	2 – 8°C / 1 year from date of receipt
PHYSICAL STATE	Liquid
BUFFER	Tris-citrate/phosphate buffer, pH 7 to 8 containing 0.09% Sodium Azide
ISOTYPE	IgG
ORIGIN	USA
PRODUCTION PROCEDURES	Antibody was affinity purified using an epitope specific to SNRNP200 immobilized on solid support.

The epitope recognized by A303-454A maps to a region between residue 400 and 450 of human Small Nuclear Ribonucleoprotein 200kDa using the numbering given in entry NP_054733.2 (GeneID 23020).

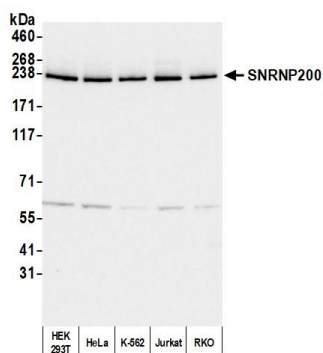
Antibody concentration was determined by extinction coefficient: absorbance at 280 nm of 1.4 equals 1.0 mg of IgG.

APPLICATIONS	Centrifuge tube to remove product from lid. Optimal working dilutions should be determined experimentally by the investigator. Prepare working dilution immediately before use.
	Western Blot 1:2,000 – 1:10,000
	Immunoprecipitation 2 – 10 µg/mg lysate
	Immunohistochemistry 1:1,000 to 1:5,000. Epitope retrieval with citrate buffer pH6.0 is recommended for FFPE tissue sections.

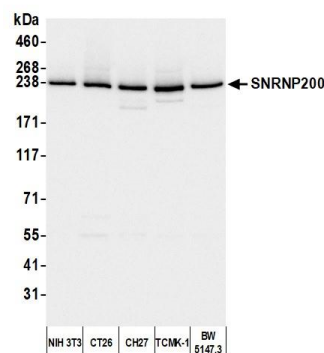
IHC HUMAN CONTROLS Breast Carcinoma, Colon Carcinoma, Stomach Adenocarcinoma

ADDITIONAL INFO <https://www.fortislife.com/p/A303-454A>
Use the link above to view SDS, a current list of citations, and other product specific information.

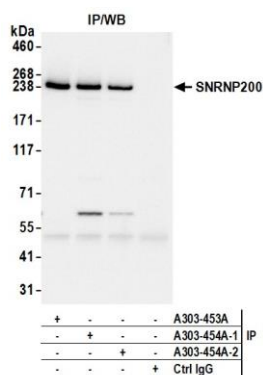
This document certifies that this product has met all of the quality control standards defined by Bethyl Laboratories, Inc.
Michael Spencer, PhD Date: April 18, 2023



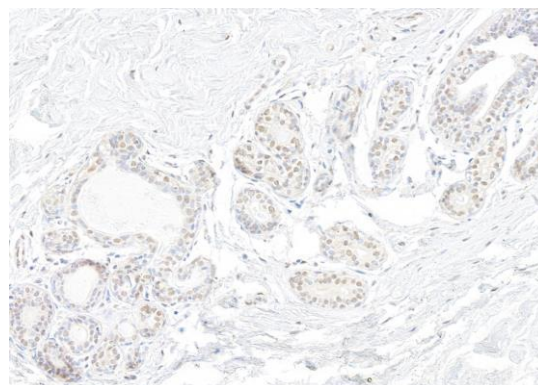
Detection of human SNRNP200 by western blot. *Samples:* Whole cell lysate (10 µg) from HEK293T, HeLa, K-562, Jurkat, and RKO cells prepared using NETN lysis buffer. *Antibody:* Affinity purified rabbit anti-SNRNP200 antibody (A303-454A lot 2) used for WB at 0.1 µg/ml. *Detection:* Chemiluminescence with an exposure time of 3 seconds.



Detection of mouse SNRNP200 by western blot. *Samples:* Whole cell lysate (10 µg) from NIH 3T3, CT26, CH27, TCMK-1, and BW5147.3 cells prepared using NETN lysis buffer. *Antibody:* Affinity purified rabbit anti-SNRNP200 antibody (A303-454A lot 2) used for WB at 0.1 µg/ml. *Detection:* Chemiluminescence with an exposure time of 3 seconds.



Detection of human SNRNP200 by western blot of immunoprecipitates. *Samples:* Whole cell lysate (1.0 mg per IP reaction; 20% of IP loaded) from HEK293T cells prepared using NETN lysis buffer. *Antibodies:* Affinity purified rabbit anti-SNRNP200 antibody (A303-454A lot 2) used for IP at 6 µg per reaction. SNRNP200 was also immunoprecipitated by a previous lot of this antibody (A303-454A lot 1) and a second antibody against a different epitope of SNRNP200 (A303-453A). For blotting immunoprecipitated SNRNP200, A303-454A was used at 0.1 µg/ml. *Detection:* Chemiluminescence with an exposure time of 1 second.



Detection of human SNRNP200 by immunohistochemistry. *Sample:* FFPE section of human breast carcinoma. *Antibody:* Affinity purified rabbit anti-SNRNP200 (Cat. No. A303-454A Lot2) used at a dilution of 1:5,000 (0.2µg/ml). *Detection:* DAB. *Counterstain:* hematoxylin (blue).