



SZABO SCANDIC

Part of Europa Biosite

Produktinformation



Forschungsprodukte & Biochemikalien



Zellkultur & Verbrauchsmaterial



Diagnostik & molekulare Diagnostik



Laborgeräte & Service

Weitere Information auf den folgenden Seiten!
See the following pages for more information!



Lieferung & Zahlungsart

siehe unsere [Liefer- und Versandbedingungen](#)

Zuschläge

- Mindermengenzuschlag
- Trockeneiszuschlag
- Gefahrgutzuschlag
- Expressversand

SZABO-SCANDIC HandelsgmbH

Quellenstraße 110, A-1100 Wien

T. +43(0)1 489 3961-0

F. +43(0)1 489 3961-7

mail@szabo-scandic.com

www.szabo-scandic.com

[linkedin.com/company/szaboscandic](https://www.linkedin.com/company/szaboscandic) 

ACE2 Antibody

Rabbit Polyclonal

Affinity Purified

Protein ID NP_068576.1

Catalog No. A306-001A-T

GeneID 59272

Lot No. A306-001A-T-1

APPLICATIONS	WB, IP
SPECIES REACTIVITY	Human
AMOUNT	10 µl
CONCENTRATION	1000 µg/ml
STORAGE/SHELF LIFE	2 – 8°C / 1 year from date of receipt
PHYSICAL STATE	Liquid
BUFFER	Phosphate Buffered Saline (PBS) containing 0.09% Sodium Azide
ISOTYPE	IgG
ORIGIN	USA
PRODUCTION PROCEDURES	The antibody was isolated by affinity chromatography using antigen coupled to agarose beads. Immunogen was HEK293-derived human ACE2 protein fragment (Gln18–Ser740) using the numbering given in entry NP_068576.1 (Gene ID 59272). Antibody concentration was determined by extinction coefficient: absorbance at 280 nm of 1.4 equals 1.0 mg of IgG.

APPLICATIONS Centrifuge tube to remove product from lid. Optimal working dilutions should be determined experimentally by the investigator. Prepare working dilution immediately before use.

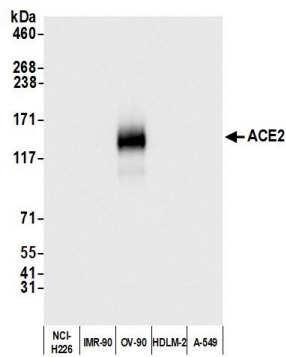
Western Blot 1:2,000 – 1:10,000

Immunoprecipitation 2 – 10 µl/mg lysate

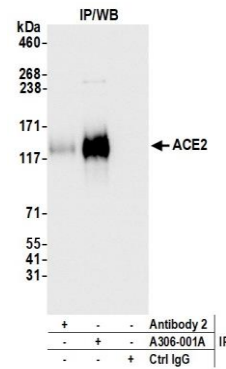
ADDITIONAL INFO <https://www.bethyl.com/product/A306-001A-T>

Use the link above to view SDS, a current list of citations, and other product specific information.

This document certifies that this product has met all of the quality control standards defined by Bethyl Laboratories, Inc.
Michael Spencer, PhD Date: May 3, 2022



Detection of human ACE2 by western blot. *Samples:* Whole cell lysate (5 μ g) from NCI-H226, IMR-90, OV-90, HDLM-2, and A-549 cells prepared using NETN lysis buffer. *Antibody:* Affinity purified rabbit anti-ACE2 antibody (A306-001A lot 1) used for WB at 0.04 μ g/ml. *Detection:* Chemiluminescence with an exposure time of 1 second.



Detection of human ACE2 by western blot of immunoprecipitates. *Samples:* Whole cell lysate (500 μ g per IP reaction; 5% of IP loaded) from OV-90 cells prepared using NETN lysis buffer. *Antibodies:* Affinity purified rabbit anti-ACE2 antibody (A306-001A lot 1) used for IP at 6 μ g per reaction. ACE2 was also immunoprecipitated by a second antibody against a different epitope to ACE2 (Antibody 2). For blotting immunoprecipitated ACE2, A306-001A was used at 0.04 μ g/ml. *Detection:* Chemiluminescence with an exposure time of 1 second.