



SZABO SCANDIC

Part of Europa Biosite

Produktinformation



Forschungsprodukte & Biochemikalien



Zellkultur & Verbrauchsmaterial



Diagnostik & molekulare Diagnostik



Laborgeräte & Service

Weitere Information auf den folgenden Seiten!
See the following pages for more information!



Lieferung & Zahlungsart

siehe unsere [Liefer- und Versandbedingungen](#)

Zuschläge

- Mindermengenzuschlag
- Trockeneiszuschlag
- Gefahrgutzuschlag
- Expressversand

SZABO-SCANDIC HandelsgmbH

Quellenstraße 110, A-1100 Wien

T. +43(0)1 489 3961-0

F. +43(0)1 489 3961-7

mail@szabo-scandic.com

www.szabo-scandic.com

[linkedin.com/company/szaboscandic](https://www.linkedin.com/company/szaboscandic) 

Goat IgG Heavy and Light Chain Antibody

Donkey Polyclonal Conjugate HRP

Antigen Affinity Purified

Catalog No. A50-101P

Lot No. A50-101P-32

APPLICATIONS WB, IHC, ICC, ELISA

SPECIES REACTIVITY Goat

AMOUNT 1 ml

CONCENTRATION 1 mg/ml

STORAGE/SHELF LIFE 2 - 8°C / 1 year from date of receipt

PHYSICAL STATE Liquid

BUFFER Phosphate Buffered Saline (PBS) containing 0.05% Pro-Clean 400

ISOTYPE IgG

ORIGIN USA

PRODUCTION PROCEDURES The antibody was isolated by affinity chromatography using antigen coupled to agarose beads and conjugated to horseradish peroxidase (HRP).

Antibody concentration was determined by extinction coefficient prior to conjugation: absorbance at 280 nm of 1.4 equals 1.0 mg of IgG. Molar enzyme/antibody protein ratio is 4:1.

By immunoelectrophoresis and ELISA this antibody reacts specifically with goat IgG and with light chains common to other goat immunoglobulins. No antibody was detected against non-immunoglobulin serum proteins.

This antibody may cross react with IgG from other species.

APPLICATIONS Centrifuge tube to remove product from lid. Optimal working dilutions should be determined experimentally by the investigator. Prepare working dilution immediately before use.

Western Blot 1:5,000 - 1:50,000

Immunohistochemistry 1:50 - 1:500

Immunocytochemistry 1:50 - 1:1,000

ELISA 1:10,000 - 1:100,000

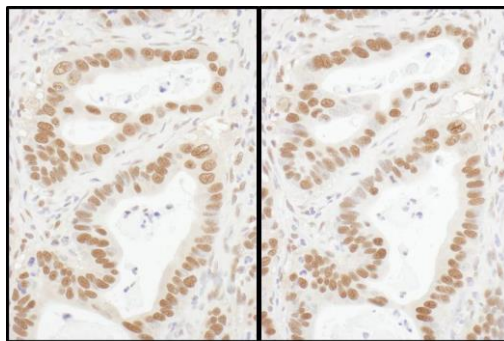
APPLICATION NOTES Not all listed applications have been specifically tested by our laboratory.

IHC validation was performed using Immunohistochemistry Accessory Kit (Cat. # IHC-101).

ADDITIONAL INFO <https://www.bethyl.com/product/A50-101P>

Use the link above to view SDS, a current list of citations, and other product specific information.

This document certifies that this product has met all of the quality control standards defined by Bethyl Laboratories, Inc.
Michael Spencer, PhD Date: February 15, 2022



A50-101P Lot 23 A50-101P Lot 23

Detection of human Sp1 by immunohistochemistry.

Sample: FFPE section of human stomach carcinoma.

Antibody: Affinity purified rabbit anti-Sp1 (Cat. No. A303-944A Lot1) used at a dilution of 1:5,000 (0.2µg/ml).

Secondary Antibody: donkey anti-goat IgG-heavy and light chain Antibody HRP Conjugated A50-101P Lot 23 (left) and A50-101P Lot 24 (right) used at a dilution of 1:200 (5 µg/ml). *Detection:* DAB