



SZABO SCANDIC

Part of Europa Biosite

Produktinformation



Forschungsprodukte & Biochemikalien



Zellkultur & Verbrauchsmaterial



Diagnostik & molekulare Diagnostik



Laborgeräte & Service

Weitere Information auf den folgenden Seiten!
See the following pages for more information!



Lieferung & Zahlungsart

siehe unsere [Liefer- und Versandbedingungen](#)

Zuschläge

- Mindermengenzuschlag
- Trockeneiszuschlag
- Gefahrgutzuschlag
- Expressversand

SZABO-SCANDIC HandelsgmbH

Quellenstraße 110, A-1100 Wien

T. +43(0)1 489 3961-0

F. +43(0)1 489 3961-7

mail@szabo-scandic.com

www.szabo-scandic.com

[linkedin.com/company/szaboscandic](https://www.linkedin.com/company/szaboscandic) 

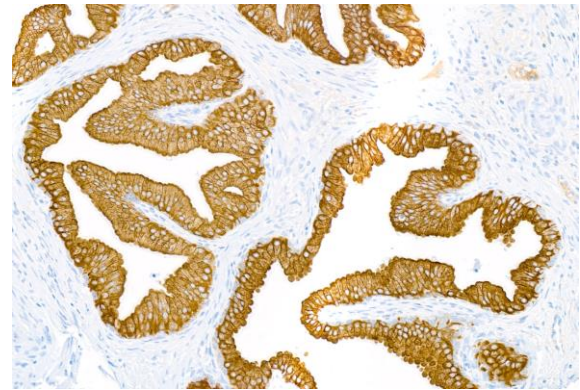
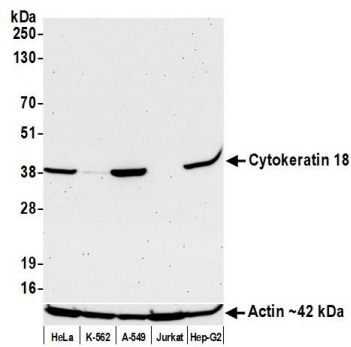
Cytokeratin 18 Monoclonal Antibody [LDK18]

Mouse Monoclonal

Purified		RefSeq ID	NP_000215.1
Catalog No.	A500-035A-T	Uniprot ID	P05783
Lot No.	A500-035A-T-1	GeneID	3875

APPLICATIONS	WB, IHC, ICC, Flow Cyt
SPECIES REACTIVITY	Human
AMOUNT	10 µl (5+ tests)
CONCENTRATION	100 µg/ml
STORAGE/SHELF LIFE	2 – 8°C / 1 year from date of receipt
PHYSICAL STATE	Liquid
BUFFER	Phosphate Buffered Saline (PBS) pH 8.2 with 0.1% BSA and 0.09% Sodium Azide
ISOTYPE	IgG1
CLONE #	LDK18
ORIGIN	USA
PRODUCTION PROCEDURES	Monoclonal antibody was purified from cell culture supernatant. Immunogen was a peptide representing a region between residue 380 and the C-terminus (residue 430) of human cytokeratin 18 using the numbering given in entry NP_000215.1 (Gene ID 3875).
APPLICATIONS	Centrifuge tube to remove product from lid. Optimal working dilutions should be determined experimentally by the investigator. Prepare working dilution immediately before use. Western Blot 1:1,000 Immunohistochemistry 1:100 to 1:500. Epitope retrieval with citrate buffer pH 6.0 is recommended for FFPE tissue sections. Immunocytochemistry 1:100 to 1:500. Epitope retrieval with citrate buffer pH 6.0 is recommended for FFPE cell sections. Flow Cytometry Fixed in 4% formaldehyde and permeabilized with 90% methanol. 1 µl per 1 × 10 ⁶ cells.
IHC HUMAN CONTROLS	Breast Carcinoma, Colon Carcinoma, Ovarian Carcinoma, Prostate Carcinoma, Renal Cell Carcinoma, A-549 Cells, MCF-7 Cells, NCI-H226 Cells, OVCAR-3 Cells, OVCAR-4 Cells
ADDITIONAL INFO	https://www.fortislife.com/p/A500-035A-T Use the link above to view SDS, a current list of citations, and other product specific information.

This document certifies that this product has met all of the quality control standards defined by Bethyl Laboratories, Inc.
Michael Spencer, PhD Date: September 29, 2022

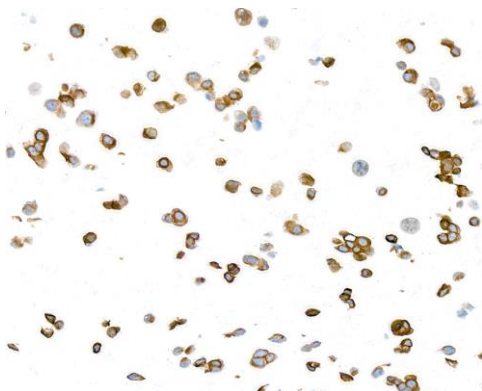


Detection of human Cytokeratin 18 by western blot.

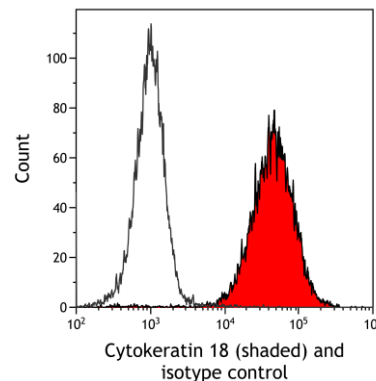
Samples: Whole cell lysate (50 µg) from HeLa, K-562, A-549, Jurkat, and Hep-G2 cells prepared using NETN lysis buffer. *Antibody:* Mouse anti-Cytokeratin 18 monoclonal antibody [LDK18] (A500-035A lot 1) used at 1:1000. *Secondary:* HRP-conjugated goat anti-mouse IgG (A90-116P). Chemiluminescence with an exposure time of 75 seconds. Lower Panel: Rabbit anti-Actin recombinant monoclonal antibody [BLR057F] (A700-057).

Detection of human Cytokeratin 18 by immunohistochemistry.

Sample: FFPE section of prostate carcinoma. *Antibody:* Mouse anti-Cytokeratin 18 monoclonal antibody [LDK18] (A500-035A-1). *Secondary:* HRP-conjugated goat anti-mouse IgG (A90-116P).



Detection of human Cytokeratin 18 by immunocytochemistry. *Sample:* FFPE section of Ovarc 3 cells. *Antibody:* Mouse anti-Cytokeratin 18 monoclonal antibody [LDK18] (A500-035A-1). *Secondary:* HRP-conjugated goat anti-mouse IgG (A90-116P).



Detection of human Cytokeratin 18 (shaded) in A549 cells by flow cytometry. *Antibody:* Mouse anti-CK18 monoclonal antibody [LDK18] (A500-035A) or secondary antibody only (unshaded). *Secondary:* DyLight® 650-conjugated goat anti-mouse IgG (A90-116D5).