



# SZABO SCANDIC

Part of Europa Biosite

## Produktinformation



Forschungsprodukte & Biochemikalien



Zellkultur & Verbrauchsmaterial



Diagnostik & molekulare Diagnostik



Laborgeräte & Service

Weitere Information auf den folgenden Seiten!  
See the following pages for more information!



### Lieferung & Zahlungsart

siehe unsere [Liefer- und Versandbedingungen](#)

### Zuschläge

- Mindermengenzuschlag
- Trockeneiszuschlag
- Gefahrgutzuschlag
- Expressversand

### SZABO-SCANDIC HandelsgmbH

Quellenstraße 110, A-1100 Wien

T. +43(0)1 489 3961-0

F. +43(0)1 489 3961-7

[mail@szabo-scandic.com](mailto:mail@szabo-scandic.com)

[www.szabo-scandic.com](http://www.szabo-scandic.com)

[linkedin.com/company/szaboscandic](https://www.linkedin.com/company/szaboscandic) 

# SOX2 Monoclonal Antibody [BC36]

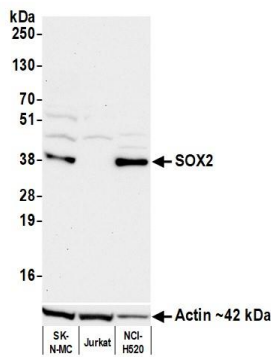
Mouse Monoclonal

Purified		RefSeq ID	NP_003097.1
Catalog No.	A500-037A	Uniprot ID	P48431
Lot No.	A500-037A-1	GeneID	6657

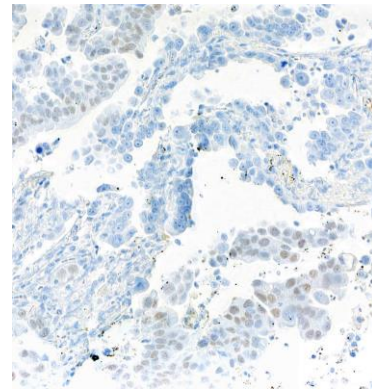
---

<b>APPLICATIONS</b>	WB, IHC, ICC
<b>SPECIES REACTIVITY</b>	Human
<b>AMOUNT</b>	100 µl (50+ tests)
<b>CONCENTRATION</b>	500 µg/ml
<b>STORAGE/SHELF LIFE</b>	2 – 8°C / 1 year from date of receipt
<b>PHYSICAL STATE</b>	Liquid
<b>BUFFER</b>	Phosphate Buffered Saline (PBS) pH 8.2 with 0.1% BSA and 0.09% Sodium Azide
<b>ISOTYPE</b>	IgG1
<b>CLONE #</b>	BC36
<b>ORIGIN</b>	USA
<b>PRODUCTION PROCEDURES</b>	Monoclonal antibody was purified from cell culture supernatant. Immunogen was human SOX2.
<b>APPLICATIONS</b>	Centrifuge tube to remove product from lid. Optimal working dilutions should be determined experimentally by the investigator. Prepare working dilution immediately before use.  Western Blot                      1:1,000  Immunohistochemistry      1:100 to 1:500. Epitope retrieval with citrate buffer pH 6.0 using a pressure cooker is recommended for FFPE tissue sections.  Immunocytochemistry      1:100 to 1:500. Epitope retrieval with citrate buffer pH 6.0 using a pressure cooker is recommended for FFPE cell sections.
<b>IHC HUMAN CONTROLS</b>	Bladder Carcinoma, Glioblastoma, Lung Carcinoma, SK-N-MC Cells, U-251 MG Cells
<b>ADDITIONAL INFO</b>	<a href="https://www.fortislife.com/p/A500-037A">https://www.fortislife.com/p/A500-037A</a> Use the link above to view SDS, a current list of citations, and other product specific information.

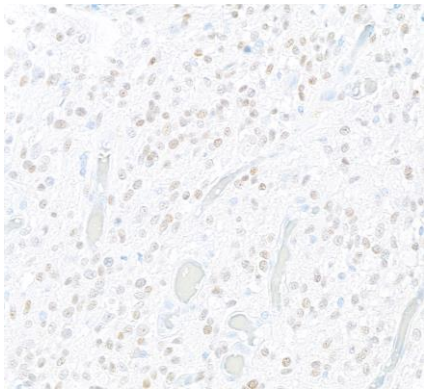
This document certifies that this product has met all of the quality control standards defined by Bethyl Laboratories, Inc.  
Michael Spencer, PhD Date: September 30, 2022



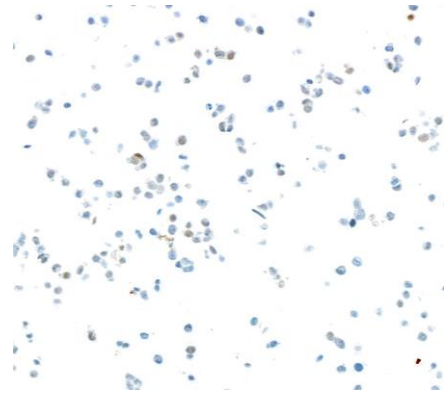
**Detection of human SOX2 by western blot.** *Samples:* Whole cell lysate (50  $\mu$ g) from SK-N-MC, Jurkat, and NCI-H520 (10  $\mu$ g) cells prepared using NETN lysis buffer. *Antibody:* Mouse anti-SOX2 monoclonal antibody [BC36] (A500-037A lot 1) used at 1:1000. *Secondary:* HRP-conjugated goat anti-mouse IgG (A90-116P). Chemiluminescence with an exposure time of 75 seconds. Lower Panel: Rabbit anti-Actin recombinant monoclonal antibody [BLR057F] (A700-057).



**Detection of human SOX2 by immunohistochemistry.** *Sample:* FFPE section of lung carcinoma. *Antibody:* Mouse anti-SOX2 monoclonal antibody [BC36] (A500-037A-1). *Secondary:* HRP-conjugated goat anti-mouse IgG (A90-116P).



**Detection of human SOX2 by immunohistochemistry.** *Sample:* FFPE section of glioblastoma. *Antibody:* Mouse anti-SOX2 monoclonal antibody [BC36] (A500-037A-1). *Secondary:* HRP-conjugated goat anti-mouse IgG (A90-116P).



**Detection of human SOX2 by immunocytochemistry.** *Sample:* FFPE section of SK-N-MC cells. *Antibody:* Mouse anti-SOX2 monoclonal antibody [BC36] (A500-037A-1). *Secondary:* HRP-conjugated goat anti-mouse IgG (A90-116P).