



SZABO SCANDIC

Part of Europa Biosite

Produktinformation



Forschungsprodukte & Biochemikalien



Zellkultur & Verbrauchsmaterial



Diagnostik & molekulare Diagnostik



Laborgeräte & Service

Weitere Information auf den folgenden Seiten!
See the following pages for more information!



Lieferung & Zahlungsart

siehe unsere [Liefer- und Versandbedingungen](#)

Zuschläge

- Mindermengenzuschlag
- Trockeneiszuschlag
- Gefahrgutzuschlag
- Expressversand

SZABO-SCANDIC HandelsgmbH

Quellenstraße 110, A-1100 Wien

T. +43(0)1 489 3961-0

F. +43(0)1 489 3961-7

mail@szabo-scandic.com

www.szabo-scandic.com

[linkedin.com/company/szaboscandic](https://www.linkedin.com/company/szaboscandic) 

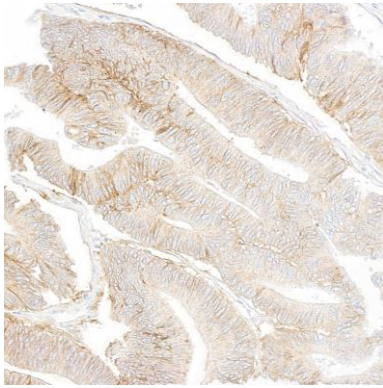
IGF1R Monoclonal Antibody [BC10]

Mouse Monoclonal

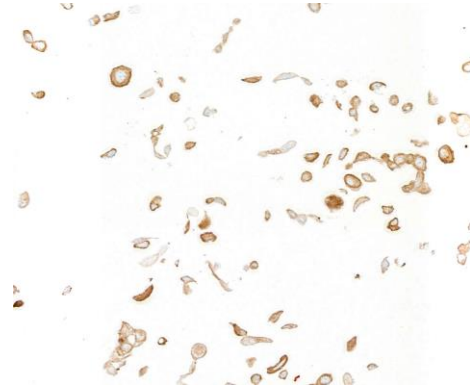
| | | | |
|-------------|---------------|------------|-------------|
| Purified | | RefSeq ID | NP_000866.1 |
| Catalog No. | A500-039A-T | Uniprot ID | P08069 |
| Lot No. | A500-039A-T-1 | GeneID | 3480 |

| | |
|------------------------------|--|
| APPLICATIONS | IHC, ICC |
| SPECIES REACTIVITY | Human |
| AMOUNT | 10 µl (5+ tests) |
| CONCENTRATION | 500 µg/ml |
| STORAGE/SHELF LIFE | 2 – 8°C / 1 year from date of receipt |
| PHYSICAL STATE | Liquid |
| BUFFER | Phosphate Buffered Saline (PBS) pH 8.2 with 0.1% BSA and 0.09% Sodium Azide |
| ISOTYPE | IgG2a |
| CLONE # | BC10 |
| ORIGIN | USA |
| PRODUCTION PROCEDURES | Monoclonal antibody was purified from cell culture supernatant. Immunogen was human IGF1R |
| APPLICATIONS | Centrifuge tube to remove product from lid. Optimal working dilutions should be determined experimentally by the investigator. Prepare working dilution immediately before use. Immunohistochemistry 1:10 to 1:200. Epitope retrieval with citrate buffer pH 6.0 is recommended for FFPE tissue sections. Immunocytochemistry 1:100 to 1:500. Epitope retrieval with citrate buffer pH6.0 is recommended for FFPE cell sections. |
| IHC HUMAN CONTROLS | Colon Carcinoma, Gastric Carcinoma, Ovarian Carcinoma, DLD-1 Cells, HT-29 Cells, NCI-H226 Cells |
| ADDITIONAL INFO | https://www.fortislife.com/p/A500-039A-T Use the link above to view SDS, a current list of citations, and other product specific information. |

This document certifies that this product has met all of the quality control standards defined by Bethyl Laboratories, Inc.
Michael Spencer, PhD Date: March 2, 2023

**Detection of human IGF1R by immunohistochemistry.**

Sample: FFPE section of colon carcinoma. *Antibody:* Mouse anti-IGF1R monoclonal antibody [BC10] (A500-039A-T lot 1). *Secondary:* HRP-conjugated goat anti-mouse IgG (A90-116P).

**Detection of human IGF1R by immunocytochemistry.**

Sample: FFPE section of NCI-H226 cells. *Antibody:* Mouse anti-IGF1R monoclonal antibody [BC10] (A500-039A-T lot 1). *Secondary:* HRP-conjugated goat anti-mouse IgG (A90-116P).