



# SZABO SCANDIC

Part of Europa Biosite

## Produktinformation



Forschungsprodukte & Biochemikalien



Zellkultur & Verbrauchsmaterial



Diagnostik & molekulare Diagnostik



Laborgeräte & Service

Weitere Information auf den folgenden Seiten!  
See the following pages for more information!



### Lieferung & Zahlungsart

siehe unsere [Liefer- und Versandbedingungen](#)

### Zuschläge

- Mindermengenzuschlag
- Trockeneiszuschlag
- Gefahrgutzuschlag
- Expressversand

### SZABO-SCANDIC HandelsgmbH

Quellenstraße 110, A-1100 Wien

T. +43(0)1 489 3961-0

F. +43(0)1 489 3961-7

[mail@szabo-scandic.com](mailto:mail@szabo-scandic.com)

[www.szabo-scandic.com](http://www.szabo-scandic.com)

[linkedin.com/company/szaboscandic](https://www.linkedin.com/company/szaboscandic) 

# IGF1R Monoclonal Antibody [BC10]

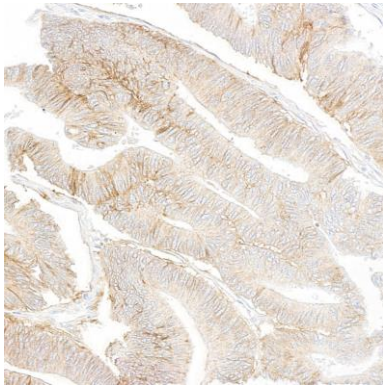
Mouse Monoclonal

Purified		RefSeq ID	NP_000866.1
Catalog No.	A500-039A	Uniprot ID	P08069
Lot No.	A500-039A-1	GeneID	3480

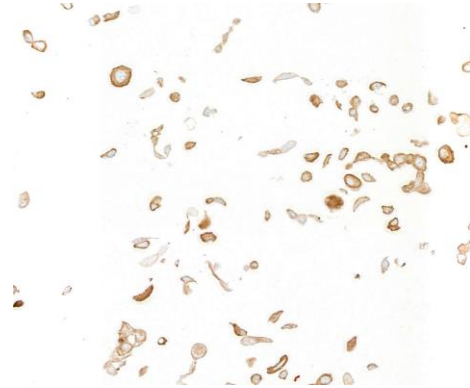
---

<b>APPLICATIONS</b>	IHC, ICC
<b>SPECIES REACTIVITY</b>	Human
<b>AMOUNT</b>	100 µl (50+ tests)
<b>CONCENTRATION</b>	500 µg/ml
<b>STORAGE/SHELF LIFE</b>	2 – 8°C / 1 year from date of receipt
<b>PHYSICAL STATE</b>	Liquid
<b>BUFFER</b>	Phosphate Buffered Saline (PBS) pH 8.2 with 0.1% BSA and 0.09% Sodium Azide
<b>ISOTYPE</b>	IgG2a
<b>CLONE #</b>	BC10
<b>ORIGIN</b>	USA
<b>PRODUCTION PROCEDURES</b>	Monoclonal antibody was purified from cell culture supernatant. Immunogen was human IGF1R
<b>APPLICATIONS</b>	Centrifuge tube to remove product from lid. Optimal working dilutions should be determined experimentally by the investigator. Prepare working dilution immediately before use.  Immunohistochemistry 1:10 to 1:200. Epitope retrieval with citrate buffer pH 6.0 is recommended for FFPE tissue sections.  Immunocytochemistry 1:100 to 1:500. Epitope retrieval with citrate buffer pH6.0 is recommended for FFPE cell sections.
<b>IHC HUMAN CONTROLS</b>	Colon Carcinoma, Gastric Carcinoma, Ovarian Carcinoma, DLD-1 Cells, HT-29 Cells, NCI-H226 Cells
<b>ADDITIONAL INFO</b>	<a href="https://www.fortislife.com/p/A500-039A">https://www.fortislife.com/p/A500-039A</a> Use the link above to view SDS, a current list of citations, and other product specific information.

This document certifies that this product has met all of the quality control standards defined by Bethyl Laboratories, Inc.  
Michael Spencer, PhD Date: March 2, 2023

**Detection of human IGF1R by immunohistochemistry.**

*Sample:* FFPE section of colon carcinoma. *Antibody:* Mouse anti-IGF1R monoclonal antibody [BC10] (A500-039A lot 1).  
*Secondary:* HRP-conjugated goat anti-mouse IgG (A90-116P).

**Detection of human IGF1R by immunocytochemistry.**

*Sample:* FFPE section of NCI-H226 cells. *Antibody:* Mouse anti-IGF1R monoclonal antibody [BC10] (A500-039A lot 1).  
*Secondary:* HRP-conjugated goat anti-mouse IgG (A90-116P).