



SZABO SCANDIC

Part of Europa Biosite

Produktinformation



Forschungsprodukte & Biochemikalien



Zellkultur & Verbrauchsmaterial



Diagnostik & molekulare Diagnostik



Laborgeräte & Service

Weitere Information auf den folgenden Seiten!
See the following pages for more information!



Lieferung & Zahlungsart

siehe unsere [Liefer- und Versandbedingungen](#)

Zuschläge

- Mindermengenzuschlag
- Trockeneiszuschlag
- Gefahrgutzuschlag
- Expressversand

SZABO-SCANDIC HandelsgmbH

Quellenstraße 110, A-1100 Wien

T. +43(0)1 489 3961-0

F. +43(0)1 489 3961-7

mail@szabo-scandic.com

www.szabo-scandic.com

[linkedin.com/company/szaboscandic](https://www.linkedin.com/company/szaboscandic) 

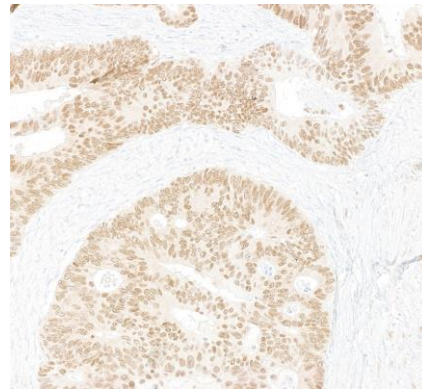
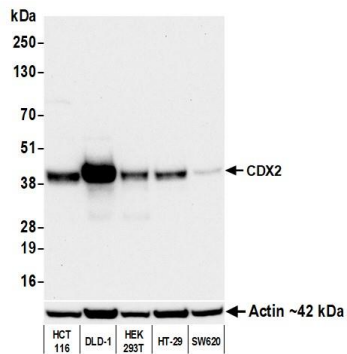
CDX2 Monoclonal Antibody [BC39]

Mouse Monoclonal

Purified		RefSeq ID	NP_001256.4
Catalog No.	A500-040A-T	Uniprot ID	Q99626
Lot No.	1	GeneID	1045

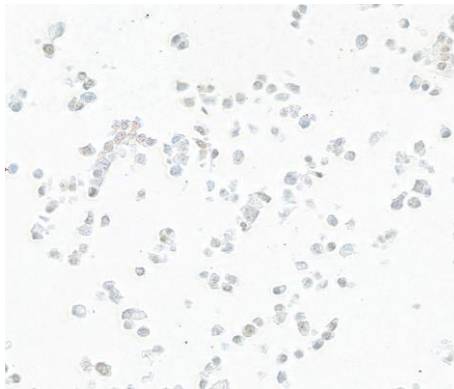
APPLICATIONS	WB, IHC, ICC
SPECIES REACTIVITY	Human
AMOUNT	10 µl (5+ tests)
CONCENTRATION	1000 µg/ml
STORAGE/SHELF LIFE	2 – 8°C / 1 year from date of receipt
PHYSICAL STATE	Liquid
BUFFER	Phosphate Buffered Saline (PBS) pH 8.2 with 0.09% Sodium Azide, BSA-Free
ISOTYPE	IgG1
CLONE #	BC39
ORIGIN	USA
PRODUCTION PROCEDURES	Monoclonal antibody was purified from cell culture supernatant. Human CDX2 recombinant protein (aa106–305)
APPLICATIONS	Centrifuge tube to remove product from lid. Optimal working dilutions should be determined experimentally by the investigator. Prepare working dilution immediately before use. Western Blot 1:1,000 Immunohistochemistry 1:100 to 1:500. Epitope retrieval with pressure cooker using citrate buffer pH 6.0 is recommended for FFPE tissue sections. Immunocytochemistry 1:100 to 1:500. Epitope retrieval with pressure cooker using citrate buffer pH 6.0 is recommended for FFPE cell sections.
IHC HUMAN CONTROLS	Colon Carcinoma, DLD-1 Cells, HT-29 Cells, KM12 Cells
ADDITIONAL INFO	https://www.fortislife.com/p/A500-040A-T Use the link above to view SDS, a current list of citations, and other product specific information.

This document certifies that this product has met all of the quality control standards defined by Bethyl Laboratories, Inc.
Michael Spencer, PhD Date: April 28, 2023



Detection of human CDX2 by western blot. *Samples:* Whole cell lysate (50 μ g) from HCT 116, DLD-1, HEK293T, HT-29, and SW620 cells prepared using NETN lysis buffer. *Antibody:* Mouse anti-CDX2 monoclonal antibody [BC39] (A500-040A lot 1) used at 1:1000. *Secondary:* HRP-conjugated goat anti-mouse IgG (A90-116P). *Detection:* Chemiluminescence with an exposure time of 30 seconds. Lower Panel: Rabbit anti-Actin recombinant monoclonal antibody [BLR057F] (A700-057).

Detection of human CDX2 by immunohistochemistry. *Sample:* FFPE section of colon carcinoma. *Antibody:* Mouse anti-CDX2 monoclonal antibody [BC39] (A500-040A-1). *Secondary:* HRP-conjugated goat anti-mouse IgG (A90-116P).



Detection of human CDX2 by immunocytochemistry. *Sample:* FFPE section of DLD-1 cells. *Antibody:* Mouse anti-CDX2 monoclonal antibody [BC39] (A500-040A-1). *Secondary:* HRP-conjugated goat anti-mouse IgG (A90-116P).