



# SZABO SCANDIC

Part of Europa Biosite

## Produktinformation



Forschungsprodukte & Biochemikalien



Zellkultur & Verbrauchsmaterial



Diagnostik & molekulare Diagnostik



Laborgeräte & Service

Weitere Information auf den folgenden Seiten!  
See the following pages for more information!



### Lieferung & Zahlungsart

siehe unsere [Liefer- und Versandbedingungen](#)

### Zuschläge

- Mindermengenzuschlag
- Trockeneiszuschlag
- Gefahrgutzuschlag
- Expressversand

### SZABO-SCANDIC HandelsgmbH

Quellenstraße 110, A-1100 Wien

T. +43(0)1 489 3961-0

F. +43(0)1 489 3961-7

[mail@szabo-scandic.com](mailto:mail@szabo-scandic.com)

[www.szabo-scandic.com](http://www.szabo-scandic.com)

[linkedin.com/company/szaboscandic](https://www.linkedin.com/company/szaboscandic) 

# PAX8 Monoclonal Antibody [BC12]

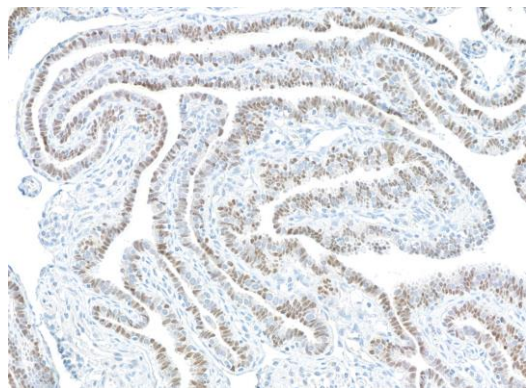
Mouse Monoclonal

Purified		RefSeq ID	NP_003457.1
Catalog No.	A500-043A-T	Uniprot ID	Q06710
Lot No.	1	GenID	7849

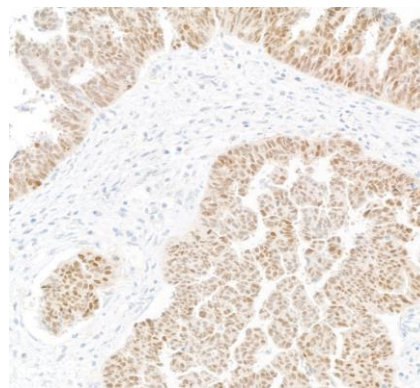
---

<b>APPLICATIONS</b>	IHC, ICC
<b>SPECIES REACTIVITY</b>	Human
<b>AMOUNT</b>	10 µl (5+ tests)
<b>CONCENTRATION</b>	50 µg/ml
<b>STORAGE/SHELF LIFE</b>	2 – 8°C / 1 year from date of receipt
<b>PHYSICAL STATE</b>	Liquid
<b>BUFFER</b>	Phosphate Buffered Saline (PBS) pH 8.2 with 0.1% BSA and 0.09% Sodium Azide
<b>ISOTYPE</b>	IgG1
<b>CLONE #</b>	BC12
<b>ORIGIN</b>	USA
<b>PRODUCTION PROCEDURES</b>	Recombinant antibody was purified from cell culture supernatant. Immunogen was a full-length human recombinant PAX8 protein.
<b>APPLICATIONS</b>	Centrifuge tube to remove product from lid. Optimal working dilutions should be determined experimentally by the investigator. Prepare working dilution immediately before use. Immunohistochemistry 1:100 to 1:500. Epitope retrieval, using pressure cooker with citrate buffer pH 6.0 is recommended for FFPE tissue sections. Immunocytochemistry 1:100 to 1:500. Epitope retrieval using pressure cooker with citrate buffer pH 6.0 is recommended for FFPE cell sections.
<b>IHC HUMAN CONTROLS</b>	Fallopian Tube, Ovarian Carcinoma, OVCAR-3 Cells, OVCAR-4 Cells
<b>ADDITIONAL INFO</b>	<a href="https://www.fortislife.com/p/A500-043A-T">https://www.fortislife.com/p/A500-043A-T</a> Use the link above to view SDS, a current list of citations, and other product specific information.

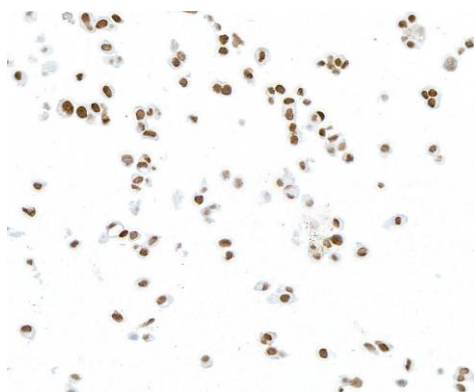
This document certifies that this product has met all of the quality control standards defined by Bethyl Laboratories, Inc.  
Michael Spencer, PhD Date: June 30, 2023



**Detection of human PAX8 by immunohistochemistry.**  
*Sample:* FFPE section of fallopian tube. *Antibody:* Mouse anti-PAX8 monoclonal antibody [BC12] (A500-043A-1).  
*Detection:* Biocare Medical MACH 4 mouse probe/HRP Polymer.



**Detection of human PAX8 by immunohistochemistry.**  
*Sample:* FFPE section of ovarian carcinoma. *Antibody:* Mouse anti-PAX8 monoclonal antibody [BC12] (A500-043A-1). *Detection:* Biocare Medical MACH 4 mouse probe/HRP Polymer.



**Detection of human PAX8 by immunocytochemistry.**  
*Sample:* FFPE section of OVCAR-3 cells. *Antibody:* Mouse anti-PAX8 monoclonal antibody [BC12] (A500-043A-1).  
*Secondary:* *Detection:* Biocare Medical MACH 4 mouse probe/HRP Polymer.