



SZABO SCANDIC

Part of Europa Biosite

Produktinformation



Forschungsprodukte & Biochemikalien



Zellkultur & Verbrauchsmaterial



Diagnostik & molekulare Diagnostik



Laborgeräte & Service

Weitere Information auf den folgenden Seiten!
See the following pages for more information!



Lieferung & Zahlungsart

siehe unsere [Liefer- und Versandbedingungen](#)

Zuschläge

- Mindermengenzuschlag
- Trockeneiszuschlag
- Gefahrgutzuschlag
- Expressversand

SZABO-SCANDIC HandelsgmbH

Quellenstraße 110, A-1100 Wien

T. +43(0)1 489 3961-0

F. +43(0)1 489 3961-7

mail@szabo-scandic.com

www.szabo-scandic.com

[linkedin.com/company/szaboscandic](https://www.linkedin.com/company/szaboscandic) 

Myoglobin Monoclonal Antibody [5mb-64]

Mouse Monoclonal

Purified		RefSeq ID	NP_005359.1
Catalog No.	A500-045A-T	Uniprot ID	P02144
Lot No.	1	GenID	4151

APPLICATIONS	WB, IHC
SPECIES REACTIVITY	Human, Mouse
AMOUNT	10 µl (5+ tests)
CONCENTRATION	100 µg/ml
STORAGE/SHELF LIFE	2 – 8°C / 1 year from date of receipt
PHYSICAL STATE	Liquid
BUFFER	Phosphate Buffered Saline (PBS) with 0.1% BSA and 0.09% Sodium Azide
ISOTYPE	IgG1
CLONE #	5mb-64
ORIGIN	USA
PRODUCTION PROCEDURES	Monoclonal antibody was purified from cell culture supernatant. Immunogen was human Myoglobin

APPLICATIONS	Centrifuge tube to remove product from lid. Optimal working dilutions should be determined experimentally by the investigator. Prepare working dilution immediately before use. Western Blot 1:1,000 Immunohistochemistry 1:100 to 1:500. Epitope retrieval with citrate buffer pH 6.0 is recommended for FFPE tissue sections.
---------------------	---

APPLICATION NOTES	All western blot analysis is performed using 5% Milk-TBST for blocking and as antibody diluent. Primary antibody is incubated overnight.
--------------------------	--

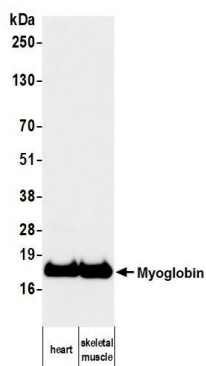
Western blots are performed using Goat anti-Mouse IgG Heavy and Light Chain Antibody (A90-216P).

IHC HUMAN CONTROLS	Cardiac Muscle, Skeletal Muscle
---------------------------	---------------------------------

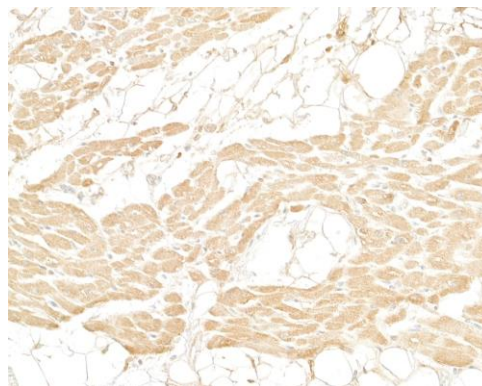
IHC MOUSE CONTROLS	Skeletal Muscle
---------------------------	-----------------

ADDITIONAL INFO	https://www.fortislifecom.com/p/A500-045A-T Use the link above to view SDS, a current list of citations, and other product specific information.
------------------------	---

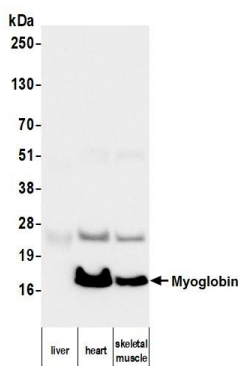
This document certifies that this product has met all of the quality control standards defined by Bethyl Laboratories, Inc.
Michael Spencer, PhD Date: May 1, 2024



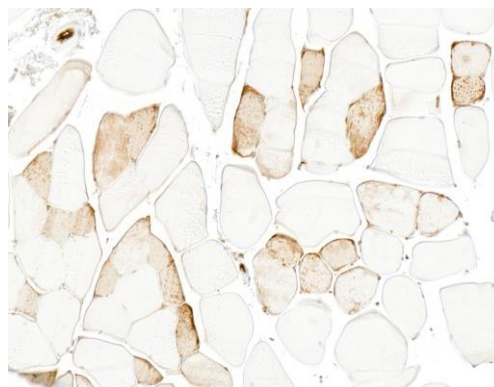
Detection of human Myoglobin by western blot. *Samples:* Whole cell tissue lysate (50 µg) from human heart and skeletal muscle. *Antibody:* Mouse anti-Myoglobin monoclonal antibody [5mb-64] (A500-045A lot 1) used at 1:1000. *Secondary:* HRP-conjugated goat anti-mouse IgG (A90-116P). *Detection:* Chemiluminescence with an exposure time of 1 second.



Detection of human Myoglobin by immunohistochemistry. *Sample:* FFPE section of human cardiac muscle. *Antibody:* Mouse anti-Myoglobin monoclonal antibody [5mb-64] (A500-045A lot 1). *Secondary:* HRP-conjugated goat anti-mouse IgG (A90-116P).



Detection of mouse Myoglobin by western blot. *Samples:* Whole cell tissue lysate (50 µg) from mouse liver, heart, and skeletal muscle. *Antibody:* Mouse anti-Myoglobin monoclonal antibody [5mb-64] (A500-045A lot 1) used at 1:1000. *Secondary:* HRP-conjugated goat anti-mouse IgG (A90-116P). *Detection:* Chemiluminescence with an exposure time of 10 seconds.



Detection of mouse Myoglobin by immunohistochemistry. *Sample:* FFPE section of mouse skeletal muscle. *Antibody:* Mouse anti-Myoglobin monoclonal antibody [5mb-64] (A500-045A lot 1). *Secondary:* HRP-conjugated goat anti-mouse IgG (A90-116P).