



# SZABO SCANDIC

Part of Europa Biosite

## Produktinformation



Forschungsprodukte & Biochemikalien



Zellkultur & Verbrauchsmaterial



Diagnostik & molekulare Diagnostik



Laborgeräte & Service

Weitere Information auf den folgenden Seiten!  
See the following pages for more information!



### Lieferung & Zahlungsart

siehe unsere [Liefer- und Versandbedingungen](#)

### Zuschläge

- Mindermengenzuschlag
- Trockeneiszuschlag
- Gefahrgutzuschlag
- Expressversand

### SZABO-SCANDIC HandelsgmbH

Quellenstraße 110, A-1100 Wien

T. +43(0)1 489 3961-0

F. +43(0)1 489 3961-7

[mail@szabo-scandic.com](mailto:mail@szabo-scandic.com)

[www.szabo-scandic.com](http://www.szabo-scandic.com)

[linkedin.com/company/szaboscandic](https://www.linkedin.com/company/szaboscandic) 

# Cardiac Troponin I Monoclonal Antibody [8I-7]

Mouse Monoclonal

Purified		RefSeq ID	NP_000354.4
Catalog No.	A500-046A	Uniprot ID	P19429
Lot No.	1	GenID	7137

---

<b>APPLICATIONS</b>	WB, IHC
<b>SPECIES REACTIVITY</b>	Human, Mouse
<b>AMOUNT</b>	100 µl (50+ tests)
<b>CONCENTRATION</b>	250 µg/ml
<b>STORAGE/SHELF LIFE</b>	2 – 8°C / 1 year from date of receipt
<b>PHYSICAL STATE</b>	Liquid
<b>BUFFER</b>	Phosphate Buffered Saline (PBS) with 0.1% BSA and 0.09% Sodium Azide
<b>ISOTYPE</b>	IgG1
<b>CLONE #</b>	8I-7
<b>ORIGIN</b>	USA
<b>PRODUCTION PROCEDURES</b>	Monoclonal antibody was purified from cell culture supernatant. Immunogen was human Cardiac Troponin I

<b>APPLICATIONS</b>	Centrifuge tube to remove product from lid. Optimal working dilutions should be determined experimentally by the investigator. Prepare working dilution immediately before use. Western Blot 1:1,000 Immunohistochemistry 1:100 to 1:500. Epitope retrieval with citrate buffer pH 6.0 is recommended for FFPE tissue sections.
---------------------	---

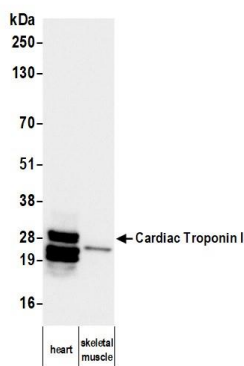
<b>APPLICATION NOTES</b>	All western blot analysis is performed using 5% Milk-TBST for blocking and as antibody diluent. Primary antibody is incubated overnight.
--------------------------	--

Western blots are performed using Goat anti-Mouse IgG Heavy and Light Chain Antibody (A90-216P).

<b>IHC HUMAN CONTROLS</b>	Cardiac Muscle
---------------------------	----------------

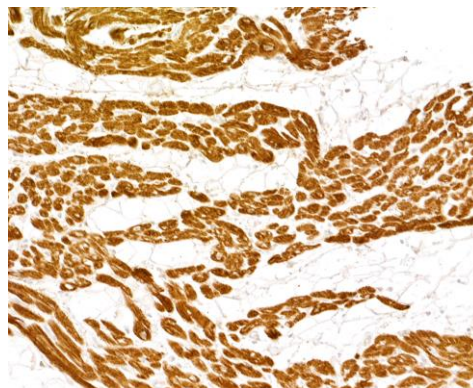
<b>ADDITIONAL INFO</b>	<a href="https://www.fortislife.com/p/A500-046A">https://www.fortislife.com/p/A500-046A</a> Use the link above to view SDS, a current list of citations, and other product specific information.
------------------------	---

This document certifies that this product has met all of the quality control standards defined by Bethyl Laboratories, Inc.  
Michael Spencer, PhD Date: May 1, 2024

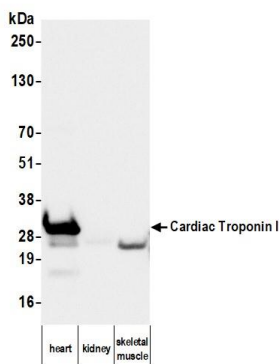


#### Detection of human Cardiac Troponin I by western blot.

*Samples:* Whole tissue lysate (50 µg) from human heart and skeletal muscle. *Antibody:* Mouse anti-Cardiac Troponin I monoclonal antibody [8I-7] (A500-046A lot 1) used at 1:1000. *Secondary:* HRP-conjugated goat anti-mouse IgG (A90-116P). *Detection:* Chemiluminescence with an exposure time of 3 seconds.



**Detection of human Cardiac Troponin I by immunohistochemistry.** *Sample:* FFPE section of human cardiac muscle. *Antibody:* Mouse anti-Cardiac Troponin I monoclonal antibody [8I-7] (A500-046A lot 1). *Secondary:* HRP-conjugated goat anti-mouse IgG (A90-116P).



#### Detection of mouse Cardiac Troponin I by western blot.

*Samples:* Whole tissue lysate (50 µg) from mouse heart, kidney, and skeletal muscle. *Antibody:* Mouse anti-Cardiac Troponin I monoclonal antibody [8I-7] (A500-046A lot 1) used at 1:1000. *Secondary:* HRP-conjugated goat anti-mouse IgG (A90-116P). *Detection:* Chemiluminescence with an exposure time of 1 second.