



SZABO SCANDIC

Part of Europa Biosite

Produktinformation



Forschungsprodukte & Biochemikalien



Zellkultur & Verbrauchsmaterial



Diagnostik & molekulare Diagnostik



Laborgeräte & Service

Weitere Information auf den folgenden Seiten!
See the following pages for more information!



Lieferung & Zahlungsart

siehe unsere [Liefer- und Versandbedingungen](#)

Zuschläge

- Mindermengenzuschlag
- Trockeneiszuschlag
- Gefahrgutzuschlag
- Expressversand

SZABO-SCANDIC HandelsgmbH

Quellenstraße 110, A-1100 Wien

T. +43(0)1 489 3961-0

F. +43(0)1 489 3961-7

mail@szabo-scandic.com

www.szabo-scandic.com

[linkedin.com/company/szaboscandic](https://www.linkedin.com/company/szaboscandic) 

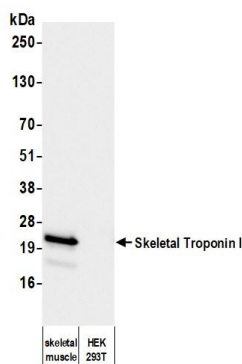
Skeletal Troponin I Monoclonal Antibody [FI-23]

Mouse Monoclonal

| | | | |
|-------------|-------------|------------|-------------|
| Purified | | RefSeq ID | NP_003273.1 |
| Catalog No. | A500-047A-T | Uniprot ID | P48788 |
| Lot No. | 1 | GenID | 7136 |

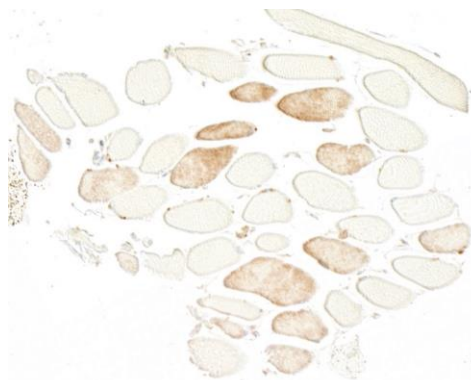
| | |
|------------------------------|---|
| APPLICATIONS | WB, IHC |
| SPECIES REACTIVITY | Human, Mouse |
| AMOUNT | 10 µl (5+ tests) |
| CONCENTRATION | 1000 µg/ml |
| STORAGE/SHELF LIFE | 2 – 8°C / 1 year from date of receipt |
| PHYSICAL STATE | Liquid |
| BUFFER | Phosphate Buffered Saline (PBS) with 0.09% Sodium Azide, BSA-Free |
| ISOTYPE | IgG1 |
| CLONE # | FI-23 |
| ORIGIN | USA |
| PRODUCTION PROCEDURES | Monoclonal antibody was purified from cell culture supernatant. Immunogen was human Skeletal Troponin I |
| APPLICATIONS | Centrifuge tube to remove product from lid. Optimal working dilutions should be determined experimentally by the investigator. Prepare working dilution immediately before use. Western Blot 1:1,000 Immunohistochemistry 1:100 to 1:500. Epitope retrieval with citrate buffer pH 6.0 is recommended for FFPE tissue sections. |
| APPLICATION NOTES | All western blot analysis is performed using 5% Milk-TBST for blocking and as antibody diluent. Primary antibody is incubated overnight. Western blots are performed using Goat anti-Mouse IgG Heavy and Light Chain Antibody (A90-216P). |
| IHC HUMAN CONTROLS | Skeletal Muscle |
| IHC MOUSE CONTROLS | Skeletal Muscle |
| ADDITIONAL INFO | https://www.fortislif.com/p/A500-047A-T Use the link above to view SDS, a current list of citations, and other product specific information. |

This document certifies that this product has met all of the quality control standards defined by Bethyl Laboratories, Inc.
Michael Spencer, PhD Date: May 1, 2024

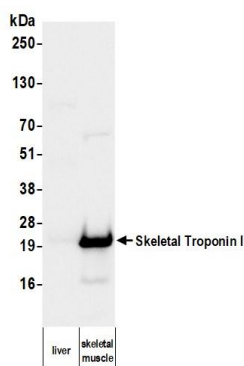


Detection of human Skeletal Troponin I by western blot.

Samples: Whole cell lysate (50 µg) from human skeletal muscle tissue lysate and HEK293T cell lysate. *Antibody:* Mouse anti-Skeletal Troponin I monoclonal antibody [FI-23] (A500-047A lot 1) used at 1:1000. *Secondary:* HRP-conjugated goat anti-mouse IgG (A90-116P). *Detection:* Chemiluminescence with an exposure time of 3 seconds.

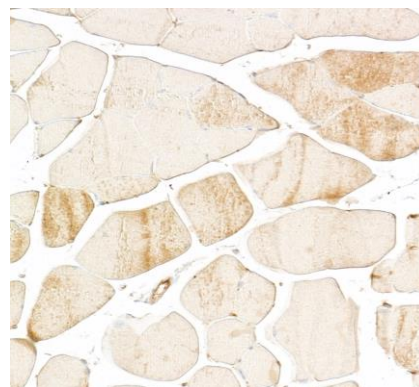


Detection of human Skeletal Troponin I by immunohistochemistry. *Sample:* FFPE section of human skeletal muscle. *Antibody:* Mouse anti-Skeletal Troponin I monoclonal antibody [FI-23] (A500-047A lot 1). *Secondary:* HRP-conjugated goat anti-mouse IgG (A90-116P).



Detection of mouse Skeletal Troponin I by western blot.

Samples: Whole tissue lysate (50 µg) from mouse liver and skeletal muscle. *Antibody:* Mouse anti-Skeletal Troponin I monoclonal antibody [FI-23] (A500-047A lot 1) used at 1:1000. *Secondary:* HRP-conjugated goat anti-mouse IgG (A90-116P). *Detection:* Chemiluminescence with an exposure time of 1 second.



Detection of mouse Skeletal Troponin I by immunohistochemistry. *Sample:* FFPE section of mouse skeletal muscle. *Antibody:* Mouse anti-Skeletal Troponin I monoclonal antibody [FI-23] (A500-047A lot 1). *Secondary:* HRP-conjugated goat anti-mouse IgG (A90-116P).