



# SZABO SCANDIC

Part of Europa Biosite

## Produktinformation



Forschungsprodukte & Biochemikalien



Zellkultur & Verbrauchsmaterial



Diagnostik & molekulare Diagnostik



Laborgeräte & Service

Weitere Information auf den folgenden Seiten!  
See the following pages for more information!



### Lieferung & Zahlungsart

siehe unsere [Liefer- und Versandbedingungen](#)

### Zuschläge

- Mindermengenzuschlag
- Trockeneiszuschlag
- Gefahrgutzuschlag
- Expressversand

### SZABO-SCANDIC HandelsgmbH

Quellenstraße 110, A-1100 Wien

T. +43(0)1 489 3961-0

F. +43(0)1 489 3961-7

[mail@szabo-scandic.com](mailto:mail@szabo-scandic.com)

[www.szabo-scandic.com](http://www.szabo-scandic.com)

[linkedin.com/company/szaboscandic](https://www.linkedin.com/company/szaboscandic) 

# Cardiac Troponin I Monoclonal Antibody [2I-14]

Mouse Monoclonal

Purified		RefSeq ID	NP_000354.4
Catalog No.	A500-049A-T	Uniprot ID	P19429
Lot No.	1	GenID	7137

---

<b>APPLICATIONS</b>	WB, IHC
<b>SPECIES REACTIVITY</b>	Human, Mouse
<b>AMOUNT</b>	10 µl (5+ tests)
<b>CONCENTRATION</b>	1000 µg/ml
<b>STORAGE/SHELF LIFE</b>	2 - 8°C / 1 year from date of receipt
<b>PHYSICAL STATE</b>	Liquid
<b>BUFFER</b>	Phosphate Buffered Saline (PBS) with 0.09% Sodium Azide, BSA-Free
<b>ISOTYPE</b>	IgG1
<b>CLONE #</b>	2I-14
<b>ORIGIN</b>	USA
<b>PRODUCTION PROCEDURES</b>	Monoclonal antibody was purified from cell culture supernatant. Immunogen was human Cardiac Troponin I

**APPLICATIONS** Centrifuge tube to remove product from lid. Optimal working dilutions should be determined experimentally by the investigator. Prepare working dilution immediately before use.

Western Blot	1:1,000
Immunohistochemistry	1:100 to 1:500. Epitope retrieval with citrate buffer pH 6.0 is recommended for FFPE tissue sections.

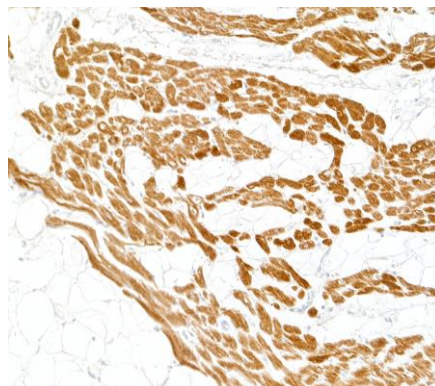
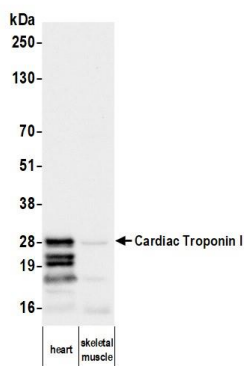
**APPLICATION NOTES** All western blot analysis is performed using 5% Milk-TBST for blocking and as antibody diluent. Primary antibody is incubated overnight.

Western blots are performed using Goat anti-Mouse IgG Heavy and Light Chain Antibody (A90-216P).

**IHC HUMAN CONTROLS** Cardiac Muscle

**ADDITIONAL INFO** <https://www.fortislife.com/p/A500-049A-T>  
Use the link above to view SDS, a current list of citations, and other product specific information.

This document certifies that this product has met all of the quality control standards defined by Bethyl Laboratories, Inc.  
Michael Spencer, PhD Date: May 1, 2024

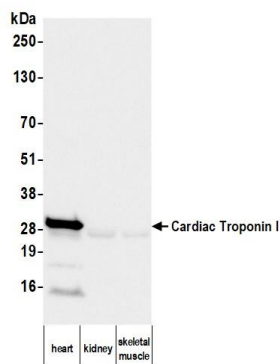


#### Detection of human Cardiac Troponin I by western blot.

*Samples:* Whole tissue lysate (50 µg) from human heart and skeletal muscle. *Antibody:* Mouse anti-Cardiac Troponin I monoclonal antibody [2I-14] (A500-049A lot 1) used at 1:1000. *Secondary:* HRP-conjugated goat anti-mouse IgG (A90-116P). *Detection:* Chemiluminescence with an exposure time of 10 seconds.

#### Detection of human Cardiac Troponin I by immunohistochemistry.

*Sample:* FFPE section of human cardiac muscle. *Antibody:* Mouse anti-Cardiac Troponin I monoclonal antibody [2I-14] (A500-049A lot 1). *Secondary:* HRP-conjugated goat anti-mouse IgG (A90-116P).



#### Detection of mouse Cardiac Troponin I by western blot.

*Samples:* Whole cell lysate (50 µg) from heart, kidney, and skeletal muscle cells prepared using NETN lysis buffer. *Antibody:* Mouse anti-Cardiac Troponin I monoclonal antibody [2I-14] (A500-049A lot 1) used at 1:1000. *Secondary:* HRP-conjugated goat anti-mouse IgG (A90-116P). *Detection:* Chemiluminescence with an exposure time of 30 seconds.