



SZABO SCANDIC

Part of Europa Biosite

Produktinformation



Forschungsprodukte & Biochemikalien



Zellkultur & Verbrauchsmaterial



Diagnostik & molekulare Diagnostik



Laborgeräte & Service

Weitere Information auf den folgenden Seiten!
See the following pages for more information!



Lieferung & Zahlungsart

siehe unsere [Liefer- und Versandbedingungen](#)

Zuschläge

- Mindermengenzuschlag
- Trockeneiszuschlag
- Gefahrgutzuschlag
- Expressversand

SZABO-SCANDIC HandelsgmbH

Quellenstraße 110, A-1100 Wien

T. +43(0)1 489 3961-0

F. +43(0)1 489 3961-7

mail@szabo-scandic.com

www.szabo-scandic.com

[linkedin.com/company/szaboscandic](https://www.linkedin.com/company/szaboscandic) 

Cardiac Troponin I Monoclonal Antibody [2I-14]

Mouse Monoclonal

Purified		RefSeq ID	NP_000354.4
Catalog No.	A500-049A	Uniprot ID	P19429
Lot No.	1	GenID	7137

APPLICATIONS	WB, IHC
SPECIES REACTIVITY	Human, Mouse
AMOUNT	100 µl (50+ tests)
CONCENTRATION	1000 µg/ml
STORAGE/SHELF LIFE	2 – 8°C / 1 year from date of receipt
PHYSICAL STATE	Liquid
BUFFER	Phosphate Buffered Saline (PBS) with 0.09% Sodium Azide, BSA-Free
ISOTYPE	IgG1
CLONE #	2I-14
ORIGIN	USA
PRODUCTION PROCEDURES	Monoclonal antibody was purified from cell culture supernatant. Immunogen was human Cardiac Troponin I

APPLICATIONS	Centrifuge tube to remove product from lid. Optimal working dilutions should be determined experimentally by the investigator. Prepare working dilution immediately before use. Western Blot 1:1,000 Immunohistochemistry 1:100 to 1:500. Epitope retrieval with citrate buffer pH 6.0 is recommended for FFPE tissue sections.
---------------------	---

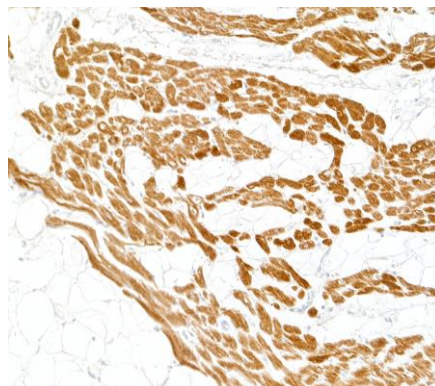
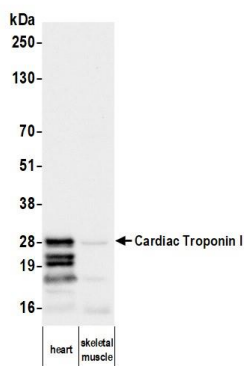
APPLICATION NOTES	All western blot analysis is performed using 5% Milk-TBST for blocking and as antibody diluent. Primary antibody is incubated overnight.
--------------------------	--

Western blots are performed using Goat anti-Mouse IgG Heavy and Light Chain Antibody (A90-216P).

IHC HUMAN CONTROLS	Cardiac Muscle
---------------------------	----------------

ADDITIONAL INFO	https://www.fortislife.com/p/A500-049A Use the link above to view SDS, a current list of citations, and other product specific information.
------------------------	---

This document certifies that this product has met all of the quality control standards defined by Bethyl Laboratories, Inc.
Michael Spencer, PhD Date: May 1, 2024

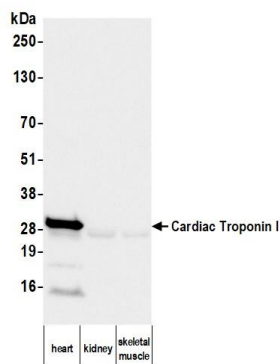


Detection of human Cardiac Troponin I by western blot.

Samples: Whole tissue lysate (50 μ g) from human heart and skeletal muscle. *Antibody:* Mouse anti-Cardiac Troponin I monoclonal antibody [2I-14] (A500-049A lot 1) used at 1:1000. *Secondary:* HRP-conjugated goat anti-mouse IgG (A90-116P). *Detection:* Chemiluminescence with an exposure time of 10 seconds.

Detection of human Cardiac Troponin I by immunohistochemistry.

Sample: FFPE section of human cardiac muscle. *Antibody:* Mouse anti-Cardiac Troponin I monoclonal antibody [2I-14] (A500-049A lot 1). *Secondary:* HRP-conjugated goat anti-mouse IgG (A90-116P).



Detection of mouse Cardiac Troponin I by western blot.

Samples: Whole cell lysate (50 μ g) from heart, kidney, and skeletal muscle cells prepared using NETN lysis buffer. *Antibody:* Mouse anti-Cardiac Troponin I monoclonal antibody [2I-14] (A500-049A lot 1) used at 1:1000. *Secondary:* HRP-conjugated goat anti-mouse IgG (A90-116P). *Detection:* Chemiluminescence with an exposure time of 30 seconds.