



# SZABO SCANDIC

Part of Europa Biosite

## Produktinformation



Forschungsprodukte & Biochemikalien



Zellkultur & Verbrauchsmaterial



Diagnostik & molekulare Diagnostik



Laborgeräte & Service

Weitere Information auf den folgenden Seiten!  
See the following pages for more information!



### Lieferung & Zahlungsart

siehe unsere [Liefer- und Versandbedingungen](#)

### Zuschläge

- Mindermengenzuschlag
- Trockeneiszuschlag
- Gefahrgutzuschlag
- Expressversand

### SZABO-SCANDIC HandelsgmbH

Quellenstraße 110, A-1100 Wien

T. +43(0)1 489 3961-0

F. +43(0)1 489 3961-7

[mail@szabo-scandic.com](mailto:mail@szabo-scandic.com)

[www.szabo-scandic.com](http://www.szabo-scandic.com)

[linkedin.com/company/szaboscandic](https://www.linkedin.com/company/szaboscandic) 

# Myosin Light Chain 1 Monoclonal Antibody [39–15]

Mouse Monoclonal

Purified		RefSeq ID	NP_524144.1
Catalog No.	A500-052A-T	Uniprot ID	P05976
Lot No.	1	GeneID	4632

---

<b>APPLICATIONS</b>	WB, IHC
<b>SPECIES REACTIVITY</b>	Human, Mouse
<b>AMOUNT</b>	10 µl (5+ tests)
<b>CONCENTRATION</b>	100 µg/ml
<b>STORAGE/SHELF LIFE</b>	2 – 8°C / 1 year from date of receipt
<b>PHYSICAL STATE</b>	Liquid
<b>BUFFER</b>	Phosphate Buffered Saline (PBS) with 0.1% BSA and 0.09% Sodium Azide
<b>ISOTYPE</b>	IgG1
<b>CLONE #</b>	39-15
<b>ORIGIN</b>	USA
<b>PRODUCTION PROCEDURES</b>	Monoclonal antibody was purified from cell culture supernatant.

Immunogen was human Myosin Light Chain 1

**APPLICATIONS** Centrifuge tube to remove product from lid. Optimal working dilutions should be determined experimentally by the investigator. Prepare working dilution immediately before use.

Western Blot	1:1,000
Immunohistochemistry	1:100 to 1:500. Epitope retrieval with citrate buffer pH 6.0 is recommended for FFPE tissue sections.

**APPLICATION NOTES** All western blot analysis is performed using 5% Milk-TBST for blocking and as antibody diluent. Primary antibody is incubated overnight.

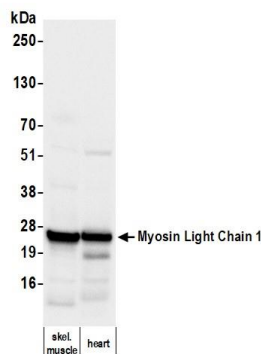
Western blots are performed using Goat anti-Mouse IgG Heavy and Light Chain Antibody (A90-116P).

**IHC HUMAN CONTROLS** Cardiac Muscle, Skeletal Muscle

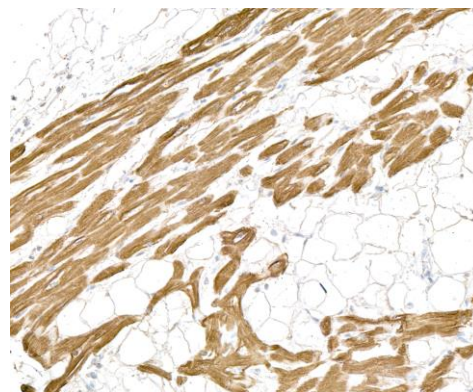
**ADDITIONAL INFO** <https://www.fortislife.com/p/A500-052A-T>

Use the link above to view SDS, a current list of citations, and other product specific information.

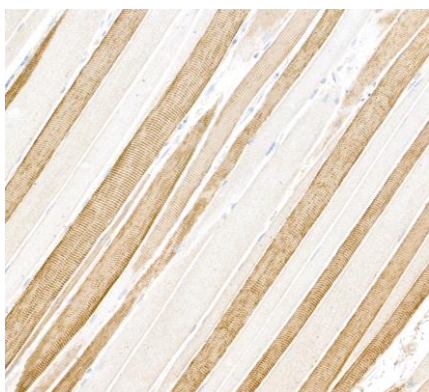
This document certifies that this product has met all of the quality control standards defined by Bethyl Laboratories, Inc.  
Michael Spencer, PhD Date: May 29, 2024



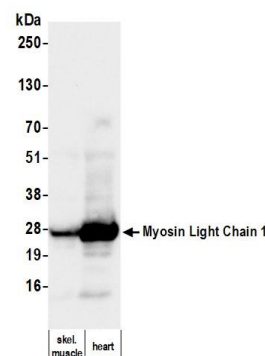
**Detection of human Myosin Light Chain 1 by western blot.** *Samples:* Tissue lysate (50  $\mu$ g) from human skeletal muscle and heart. *Antibody:* Mouse anti-Myosin Light Chain 1 monoclonal antibody [39-15] (A500-052A lot 1) used at 1:1000. *Secondary:* HRP-conjugated goat anti-mouse IgG (A90-116P). *Detection:* Chemiluminescence with an exposure time of 3 seconds.



**Detection of human Myosin Light Chain 1 by immunohistochemistry.** *Sample:* FFPE section of human cardiac muscle. *Antibody:* Mouse anti-Myosin Light Chain 1 monoclonal antibody [39-15] (A500-052A lot 1). *Secondary:* HRP-conjugated goat anti-mouse IgG (A90-116P).



**Detection of human Myosin Light Chain 1 by immunohistochemistry.** *Sample:* FFPE section of human skeletal muscle. *Antibody:* Mouse anti-Myosin Light Chain 1 monoclonal antibody [39-15] (A500-052A lot 1). *Secondary:* HRP-conjugated goat anti-mouse IgG (A90-116P).



**Detection of mouse Myosin Light Chain 1 by western blot.** *Samples:* Tissue lysate (50  $\mu$ g) from mouse skeletal muscle and heart. *Antibody:* Mouse anti-Myosin Light Chain 1 monoclonal antibody [39-15] (A500-052A lot 1) used at 1:1000. *Secondary:* HRP-conjugated goat anti-mouse IgG (A90-116P). *Detection:* Chemiluminescence with an exposure time of 3 seconds.