



# SZABO SCANDIC

Part of Europa Biosite

## Produktinformation



Forschungsprodukte & Biochemikalien



Zellkultur & Verbrauchsmaterial



Diagnostik & molekulare Diagnostik



Laborgeräte & Service

Weitere Information auf den folgenden Seiten!  
See the following pages for more information!



### Lieferung & Zahlungsart

siehe unsere [Liefer- und Versandbedingungen](#)

### Zuschläge

- Mindermengenzuschlag
- Trockeneiszuschlag
- Gefahrgutzuschlag
- Expressversand

### SZABO-SCANDIC HandelsgmbH

Quellenstraße 110, A-1100 Wien

T. +43(0)1 489 3961-0

F. +43(0)1 489 3961-7

[mail@szabo-scandic.com](mailto:mail@szabo-scandic.com)

[www.szabo-scandic.com](http://www.szabo-scandic.com)

[linkedin.com/company/szaboscandic](https://www.linkedin.com/company/szaboscandic) 

# Chicken IgY Light Chain Monoclonal Antibody

## [1Y-263]

Mouse Monoclonal

Purified

RefSeq ID BDI00300.1

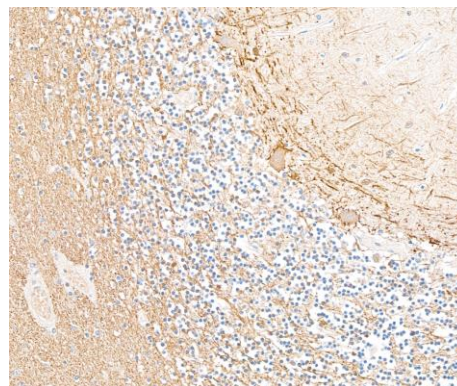
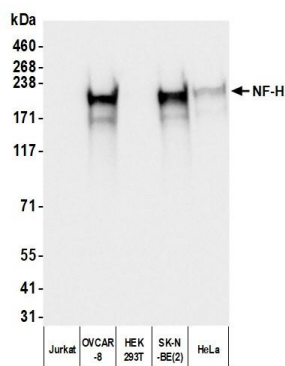
Catalog No. A500-053A-T

Lot No. 1

---

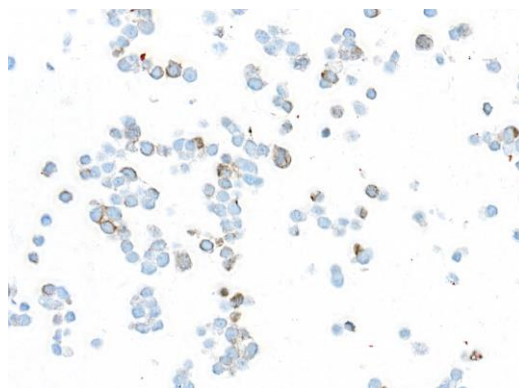
<b>APPLICATIONS</b>	WB, IHC, ICC
<b>SPECIES REACTIVITY</b>	Chicken
<b>AMOUNT</b>	10 µl (5+ tests)
<b>CONCENTRATION</b>	500 µg/ml
<b>STORAGE/SHELF LIFE</b>	2 - 8°C / 1 year from date of receipt
<b>PHYSICAL STATE</b>	Liquid
<b>BUFFER</b>	Phosphate Buffered Saline (PBS) with 0.1% BSA and 0.09% Sodium Azide
<b>ISOTYPE</b>	IgG1
<b>CLONE #</b>	1Y-263
<b>ORIGIN</b>	USA
<b>PRODUCTION PROCEDURES</b>	Monoclonal antibody was purified from cell culture supernatant. Immunogen was Chicken IgY Light Chain
<b>APPLICATIONS</b>	Centrifuge tube to remove product from lid. Optimal working dilutions should be determined experimentally by the investigator. Prepare working dilution immediately before use.  Western Blot 1:1,000 Immunohistochemistry 1:100 to 1:500. Epitope retrieval with citrate buffer pH 6.0 is recommended for FFPE tissue sections. Immunocytochemistry 1:100 to 1:500. Epitope retrieval with citrate buffer pH 6.0 is recommended for FFPE cell sections.
<b>APPLICATION NOTES</b>	All western blot analysis is performed using 5% Milk-TBST for blocking and as antibody diluent. Primary antibody is incubated overnight.  Western blots are performed using Goat anti-Mouse IgG Heavy and Light Chain Antibody (A90-116P).
<b>ADDITIONAL INFO</b>	<a href="https://www.fortislife.com/p/A500-053A-T">https://www.fortislife.com/p/A500-053A-T</a> Use the link above to view SDS, a current list of citations, and other product specific information.

This document certifies that this product has met all of the quality control standards defined by Bethyl Laboratories, Inc.  
Michael Spencer, PhD Date: June 4, 2024



**Detection of human NF-H using mouse anti-Chicken IgY secondary antibody by western blot.** *Samples:* Whole cell lysate (50 µg) from Jurkat, OVCAR-8, HEK293T, SK-N-BE(2), and HeLa cells prepared using NETN lysis buffer. *Primary:* Chicken anti-NF-H antibody. *Secondary:* mouse anti-Chicken IgY Light Chain monoclonal antibody [1Y-263] (A500-053A lot 1) used at 1:1000. *Tertiary:* HRP-conjugated goat anti-mouse IgG (A90-116P). *Detection:* Chemiluminescence with an exposure time of 1 second.

**Detection of human NF-H using mouse anti-chicken IgY secondary antibody by immunohistochemistry.** *Sample:* FFPE section of human cerebellum. *Primary:* Chicken anti-NF-H antibody. *Secondary:* Mouse anti-Chicken IgY Light Chain monoclonal antibody [1Y-263] (A500-053A lot 1). *Tertiary:* HRP-conjugated goat anti-mouse IgG (A90-116P).



**Detection of human NF-H using mouse anti-chicken IgY secondary antibody by immunocytochemistry.** *Sample:* FFPE section of SK-N-BE(2) cells. *Primary:* Chicken anti-NF-H antibody. *Secondary:* Mouse anti-Chicken IgY Light Chain monoclonal antibody [1Y-263] (A500-053A lot 1). *Tertiary:* HRP-conjugated goat anti-mouse IgG (A90-116P).