



# SZABO SCANDIC

Part of Europa Biosite

## Produktinformation



Forschungsprodukte & Biochemikalien



Zellkultur & Verbrauchsmaterial



Diagnostik & molekulare Diagnostik



Laborgeräte & Service

Weitere Information auf den folgenden Seiten!  
See the following pages for more information!



### Lieferung & Zahlungsart

siehe unsere [Liefer- und Versandbedingungen](#)

### Zuschläge

- Mindermengenzuschlag
- Trockeneiszuschlag
- Gefahrgutzuschlag
- Expressversand

### SZABO-SCANDIC HandelsgmbH

Quellenstraße 110, A-1100 Wien

T. +43(0)1 489 3961-0

F. +43(0)1 489 3961-7

[mail@szabo-scandic.com](mailto:mail@szabo-scandic.com)

[www.szabo-scandic.com](http://www.szabo-scandic.com)

[linkedin.com/company/szaboscandic](https://www.linkedin.com/company/szaboscandic) 

# SARS-CoV S-RBD Recombinant Monoclonal Antibody [CR3022-IgA1]

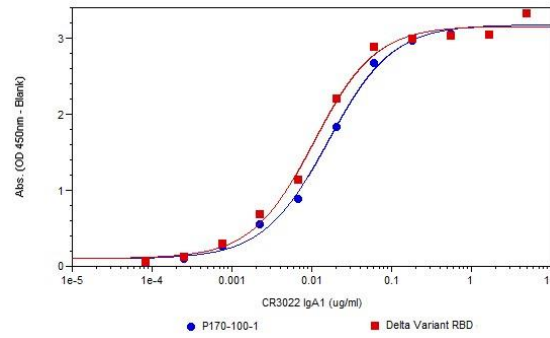
Human Recombinant Monoclonal

Purified	Protein ID	YP_009724390.1
Catalog No. A700-203	GeneID	43740568
Lot No. A700-203-1		

---

<b>APPLICATIONS</b>	ELISA
<b>AMOUNT</b>	50 µl
<b>CONCENTRATION</b>	1000 µg/ml
<b>STORAGE/SHELF LIFE</b>	2 - 8°C / 1 year from date of receipt
<b>PHYSICAL STATE</b>	Liquid
<b>BUFFER</b>	Phosphate Buffered Saline (PBS) containing 0.09% Sodium Azide
<b>ISOTYPE</b>	IgA1
<b>CLONE #</b>	CR3022-IgA1
<b>ORIGIN</b>	USA
<b>PRODUCTION PROCEDURES</b>	Recombinant antibody was purified from cell culture supernatant.  The original monoclonal antibody was generated by sequencing peripheral blood lymphocytes of a patient exposed to SARS-CoV.
<b>APPLICATIONS</b>	Centrifuge tube to remove product from lid. Optimal working dilutions should be determined experimentally by the investigator. Prepare working dilution immediately before use.  ELISA
<b>ADDITIONAL INFO</b>	<a href="https://www.bethyl.com/product/A700-203">https://www.bethyl.com/product/A700-203</a> Use the link above to view SDS, a current list of citations, and other product specific information.

This document certifies that this product has met all of the quality control standards defined by Bethyl Laboratories, Inc.  
Michael Spencer, PhD Date: May 3, 2022



**Analysis of Recombinant SARS-CoV Spike RBD [CR3022-IgA1] by ELISA.** *Sample:* Plate coated with SARS-CoV-2 SRBD/HIS Tag (P170-100 lot 1) and Delta Variant RBD at 2 ug/ml. Antibodies were titrated on a 3-fold dilution series beginning at 5 ug/ml. *Detection:* Gt x-Human IgA HRP, A80-102P at 1:5K